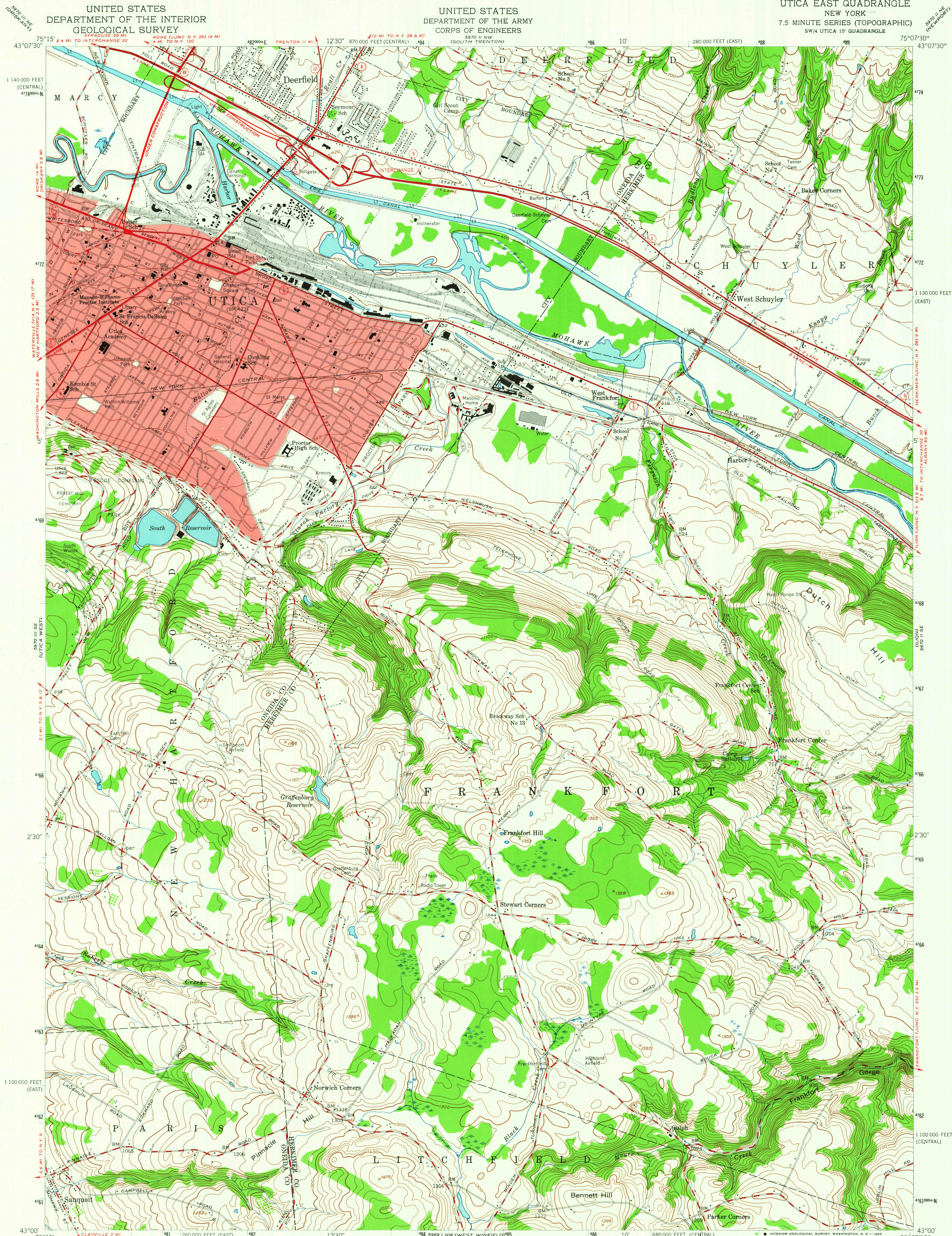


UNITED STATES
DEPARTMENT OF THE INTERIOR
GEOLOGICAL SURVEY

UNITED STATES
DEPARTMENT OF THE ARMY
CORPS OF ENGINEERS

UTICA EAST QUADRANGLE
NEW YORK
7.5 MINUTE SERIES (TOPOGRAPHIC)
SW/4 UTICA 15' QUADRANGLE



Mapped by the Army Map Service
Edited and published by the Geological Survey
Control by USGS, USC&GS, and TVA

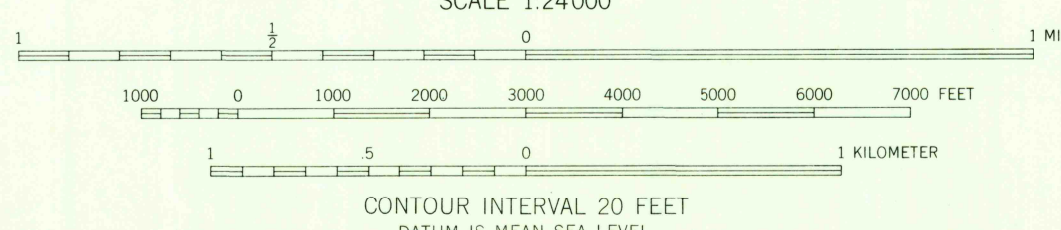
Topography from aerial photographs by photogrammetric
methods. Aerial photographs taken 1942. Field check 1943
Culture revised by the Geological Survey 1955

Polyconic projection. 1927 North American datum
10,000-foot grid based on New York coordinate system,
east and central zones
1000-meter Universal Transverse Mercator grid ticks,
zone 18, shown in blue

Red tint indicates area in which only
landmark buildings are shown

Unchecked elevations are shown in brown

UTM GRID AND 1955 MAGNETIC NORTH
DECLINATION AT CENTER OF SHEET



THIS MAP COMPLIES WITH NATIONAL MAP ACCURACY STANDARDS
FOR SALE BY U. S. GEOLOGICAL SURVEY, WASHINGTON 25, D. C.
A FOLDER DESCRIBING TOPOGRAPHIC MAPS AND SYMBOLS IS AVAILABLE ON REQUEST

USGS
Historical File
Topographic Division



ROAD CLASSIFICATION
Heavy-duty ————
Light-duty ————
Medium-duty ————
Unimproved dirt ————
State Route ————

UTICA EAST, N. Y.
SW/4 UTICA 15' QUADRANGLE
N4300-W7507.5/7.5

1955

AMS 5970 II SW-SERIES V821

FILE COPY
TOPOGRAFIA DIVISION