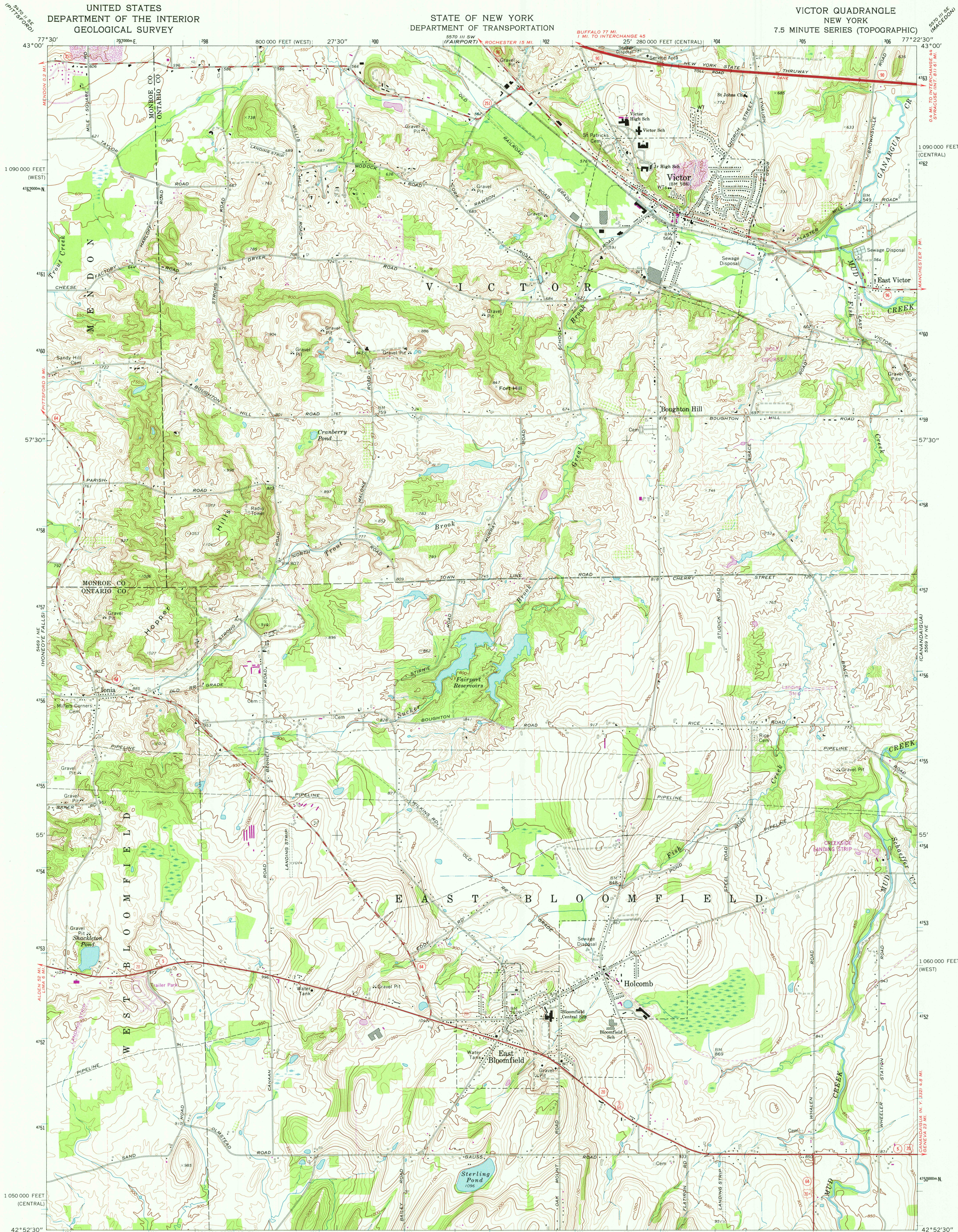


UNITED STATES  
DEPARTMENT OF THE INTERIOR  
GEOLOGICAL SURVEY

STATE OF NEW YORK  
DEPARTMENT OF TRANSPORTATION

VICTOR QUADRANGLE  
NEW YORK  
7.5 MINUTE SERIES (TOPOGRAPHIC)



Mapped, edited, and published by the Geological Survey

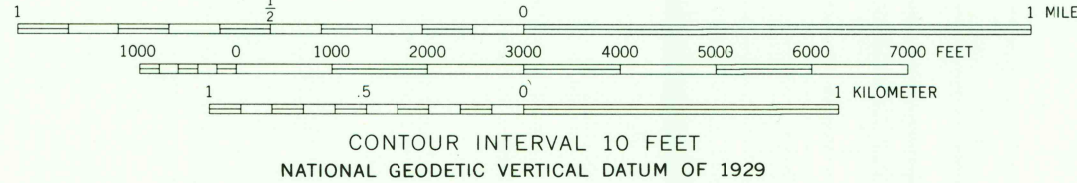
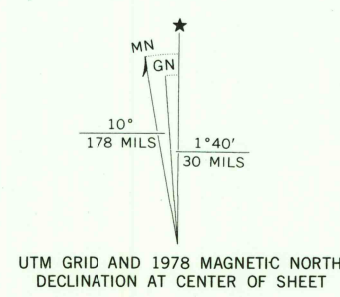
Control by USGS and USC&GS

Topography by photogrammetric methods from aerial  
photographs taken 1971. Field checked 1971  
Supersedes map dated 1951

Projection: New York coordinate system, central zone  
(transverse Mercator)  
10,000-foot grid ticks based on New York coordinate  
system, central and west zones  
1000-meter Universal Transverse Mercator grid ticks,  
zone 18, shown in blue. 1927 North American datum

Fine red dashed lines indicate selected fence and field lines where  
generally visible on aerial photographs. This information is unchecked

Revisions shown in purple compiled from aerial photographs  
taken 1976 and other source data. This information not  
field checked. Map edited 1978



ROAD CLASSIFICATION  
Primary highway, Light-duty road, hard or  
hard surface improved surface  
Secondary highway, Unimproved road, -----  
hard surface  
○ Interstate Route □ U. S. Route ○ State Route

USGS  
Historical File  
Topographic Division

VICTOR, N. Y.  
N4252.5-W7722.5/7.5

1971  
PHOTOREVISED 1978  
AMS 5569 IV NW-SERIES V821

MAR 24 1979

390