

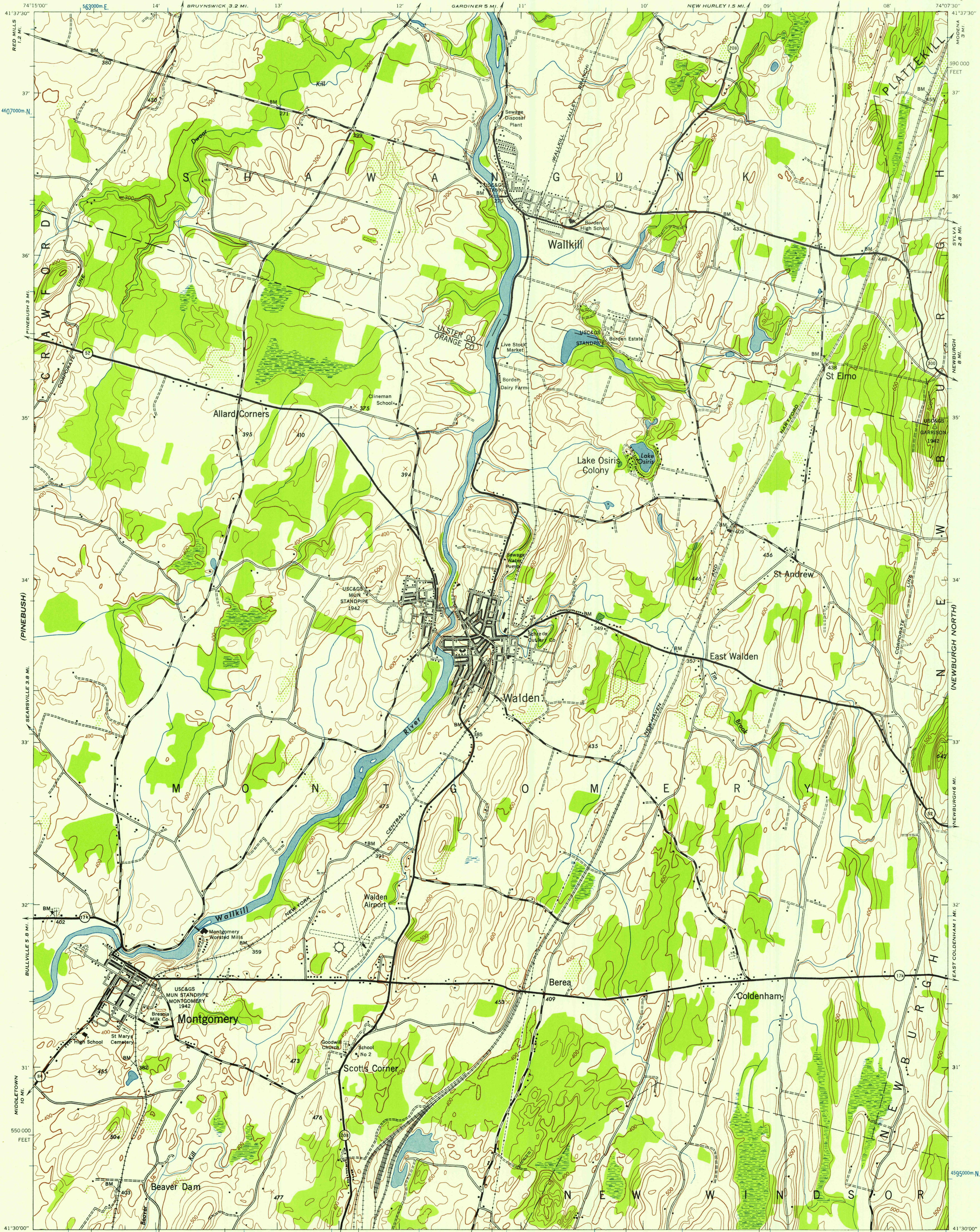
(NAPANOKI)

NEW YORK

WAR DEPARTMENT
CORPS OF ENGINEERS, U. S. ARMY

WALDEN QUADRANGLE
7.5 MINUTE SERIES

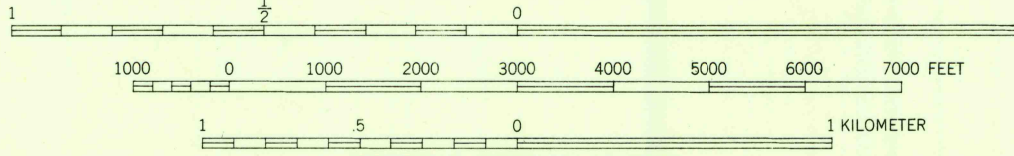
(CLINTONDALE)



First Edition 1943
Prepared under the direction of the Chief of Engineers,
U. S. Army, 1942.
Compiled by Fairchild Aerial Surveys, Inc.,
Los Angeles, California.
Topography by Fairchild Aerial Surveys, Inc.,
by Stereophotogrammetric Process.
Control by U. S. Coast and Geodetic Survey.
Aerial Photography by Fairchild Aerial Surveys, Inc., 1942.
Polyconic Projection, North American Datum 1927.

ROAD CLASSIFICATION 1943

Dependable hard surface,
heavy-duty road. Loose surface graded,
dry weather road. U. S. Route
Secondary hard surface,
all-weather road. State Route
More than two lanes indicated by note along road with tick at point of change.



CONTOUR INTERVAL 20 FEET
DATUM IS MEAN SEA LEVEL

10,000-FOOT GRID TICKS, NEW YORK PLANE COORDINATE SYSTEM, EAST ZONE, SHOWN IN BLACK.
1000-METER GRID TICKS, UNIVERSAL TRANSVERSE MERCATOR SYSTEM, ZONE 18, SHOWN IN BLUE.
REPRINTED FROM MILITARY EDITION FOR CIVIL USE

FOR SALE BY U. S. GEOLOGICAL SURVEY, WASHINGTON 25, D. C.
A FOLDER DESCRIBING TOPOGRAPHIC MAPS AND SYMBOLS IS AVAILABLE ON REQUEST

USGS
Historical File
Topographic Division

TRUE NORTH
MAGNETIC NORTH
APPROXIMATE MEAN
DECLINATION, 1942

U.S.G.S.
FILE COPY
TOPOGRAPHIC DIVISION

WALDEN, N. Y.
N4130-W7407.5/7.5
1942

955
FEB 11 1958