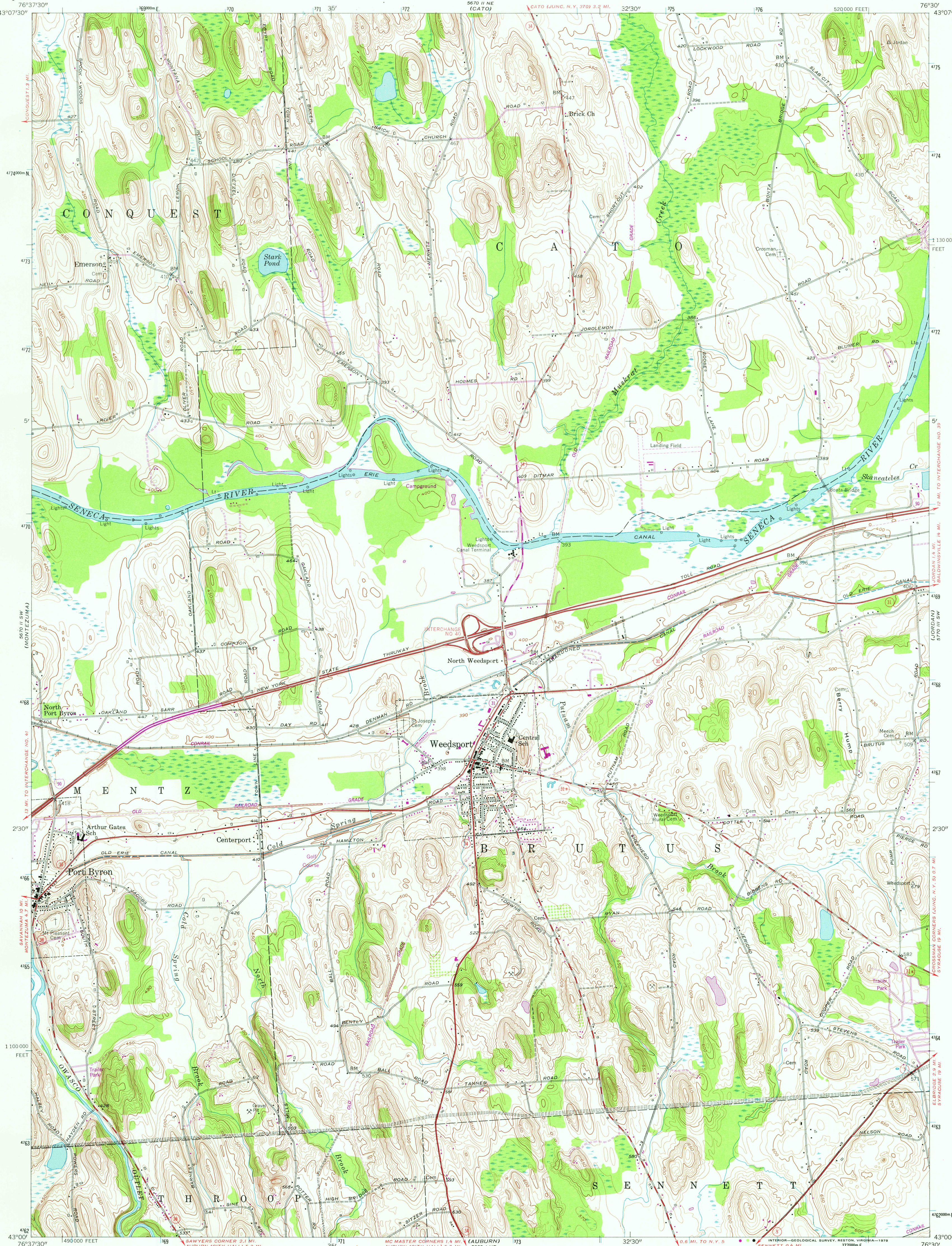




570 11 NW
(L 541 029)



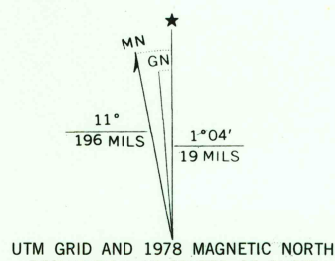
Maped, edited, and published by the Geological Survey

Control by USGS, USC&GS, and TVA

Culture and drainage in part compiled by Corps of Engineers,
U. S. Dept. of the Army, from aerial photographs taken 1942
Topography by planetable surveys 1954

Polyconic projection. 1927 North American datum
10,000-foot grid based on New York coordinate system,
central zone
1000-meter Universal Transverse Mercator grid ticks,
zone 18, shown in blue

Revisions shown in purple and woodland compiled from
aerial photographs taken 1976 and other source data.
This information not field checked. Map edited 1978



CONTOUR INTERVAL 10 FEET
NATIONAL GEODETIC VERTICAL DATUM OF 1929

THIS MAP COMPLIES WITH NATIONAL MAP ACCURACY STANDARDS
FOR SALE BY U. S. GEOLOGICAL SURVEY, RESTON, VIRGINIA 22092
A FOLDER DESCRIBING TOPOGRAPHIC MAPS AND SYMBOLS IS AVAILABLE ON REQUEST



ROAD CLASSIFICATION
Primary highway, all weather, hard surface
Secondary highway, all weather, hard surface
Light-duty road, all weather, improved surface
Unimproved road, fair or dry weather
Interstate Route U. S. Route State Route

WEEDSPORT, N. Y.
SE/4 WEEDSPORT 15' QUADRANGLE
N4300—W7630/7.5

USGS
Historical File
Topographic Division

1954
PHOTOREVISED 1978
AMS 5670 II SE—SERIES V821

APR 23 1974

2600