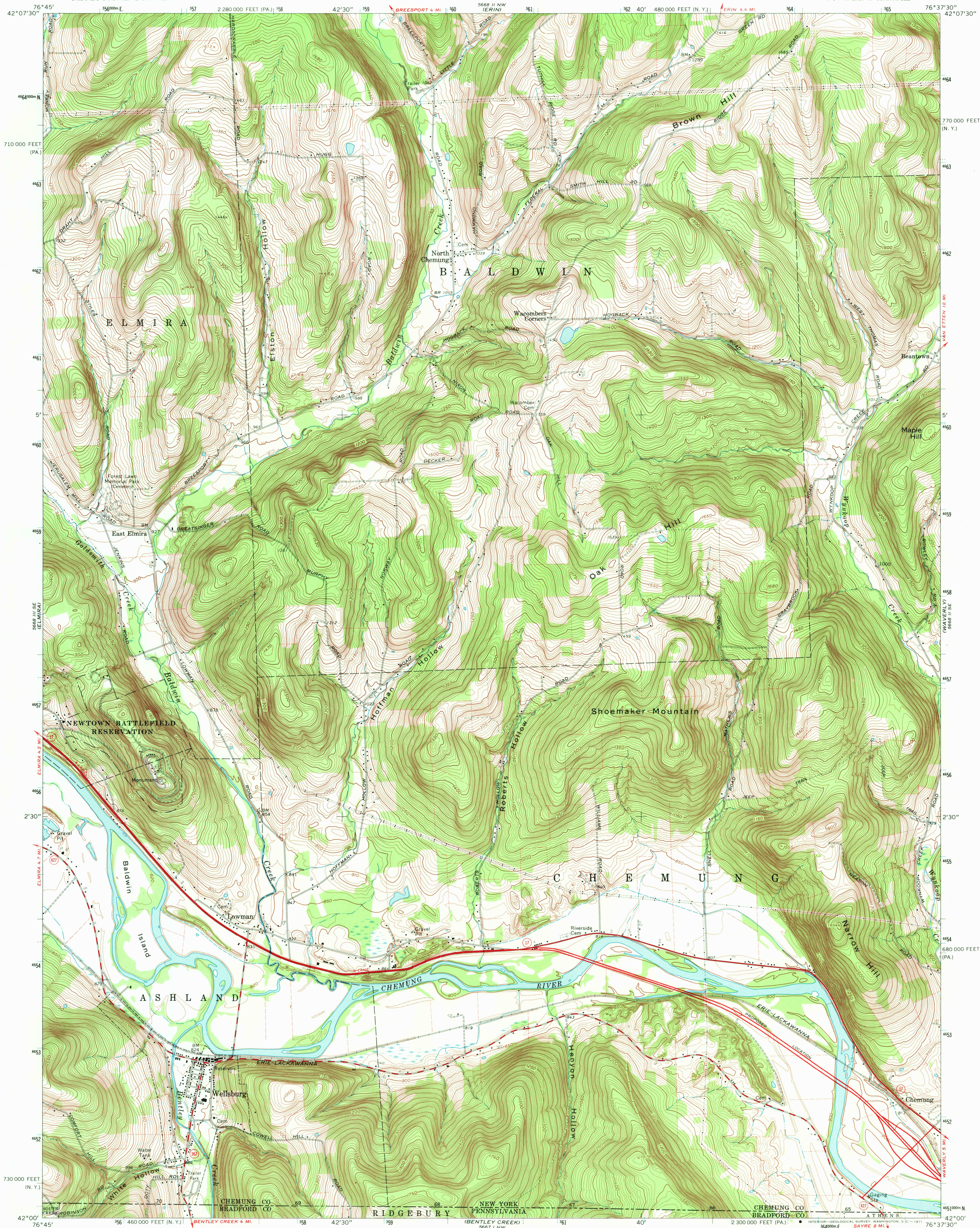


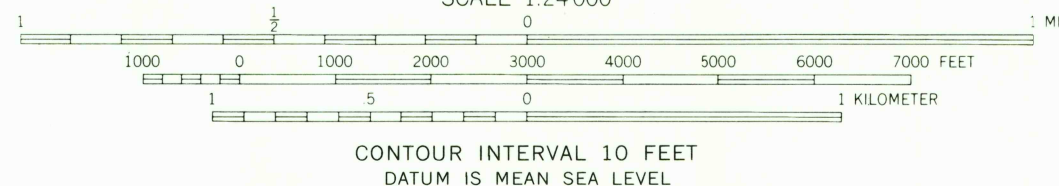
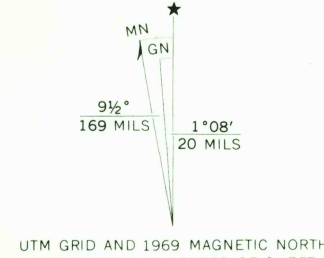
UNITED STATES
DEPARTMENT OF THE INTERIOR
GEOLOGICAL SURVEY

WELLSBURG QUADRANGLE
NEW YORK-PENNSYLVANIA
7.5 MINUTE SERIES (TOPOGRAPHIC)
SW/4 WAVERLY 15' QUADRANGLE

5668 II NE
(VAN ETEN)



Mapped, edited, and published by the Geological Survey
Revised in cooperation with New York Department
of Transportation
Control by USGS and USC&GS
Topography by photogrammetric methods from aerial photographs
taken 1942, 1944, and 1948. Field checked 1954. Revised from
aerial photographs taken 1968. Field checked 1969
Polyconic projection. 1927 North American datum
10,000-foot grids based on New York coordinate system, central
zone, and Pennsylvania coordinate system, north zone
1000-meter Universal Transverse Mercator grid ticks,
zone 18, shown in blue
Fine red dashed lines indicate selected fence and field lines where
generally visible on aerial photographs. This information is unchecked



ROAD CLASSIFICATION
Primary highway, all weather, hard surface
Secondary highway, all weather, hard surface
Light-duty road, all weather, improved surface
Unimproved road, fair or dry weather
State Route

WELLSBURG, N. Y.—PA.
SW/4 WAVERLY 15' QUADRANGLE
N4200—W7637.5/7.5

1969
AMS 5668 II SW—SERIES V821

THIS MAP COMPLIES WITH NATIONAL MAP ACCURACY STANDARDS
FOR SALE BY U. S. GEOLOGICAL SURVEY, WASHINGTON, D. C. 20242
A FOLDER DESCRIBING TOPOGRAPHIC MAPS AND SYMBOLS IS AVAILABLE ON REQUEST

USGS
HISTORICAL FILE
TOPOGRAPHIC DIVISION

SEP 24 1971