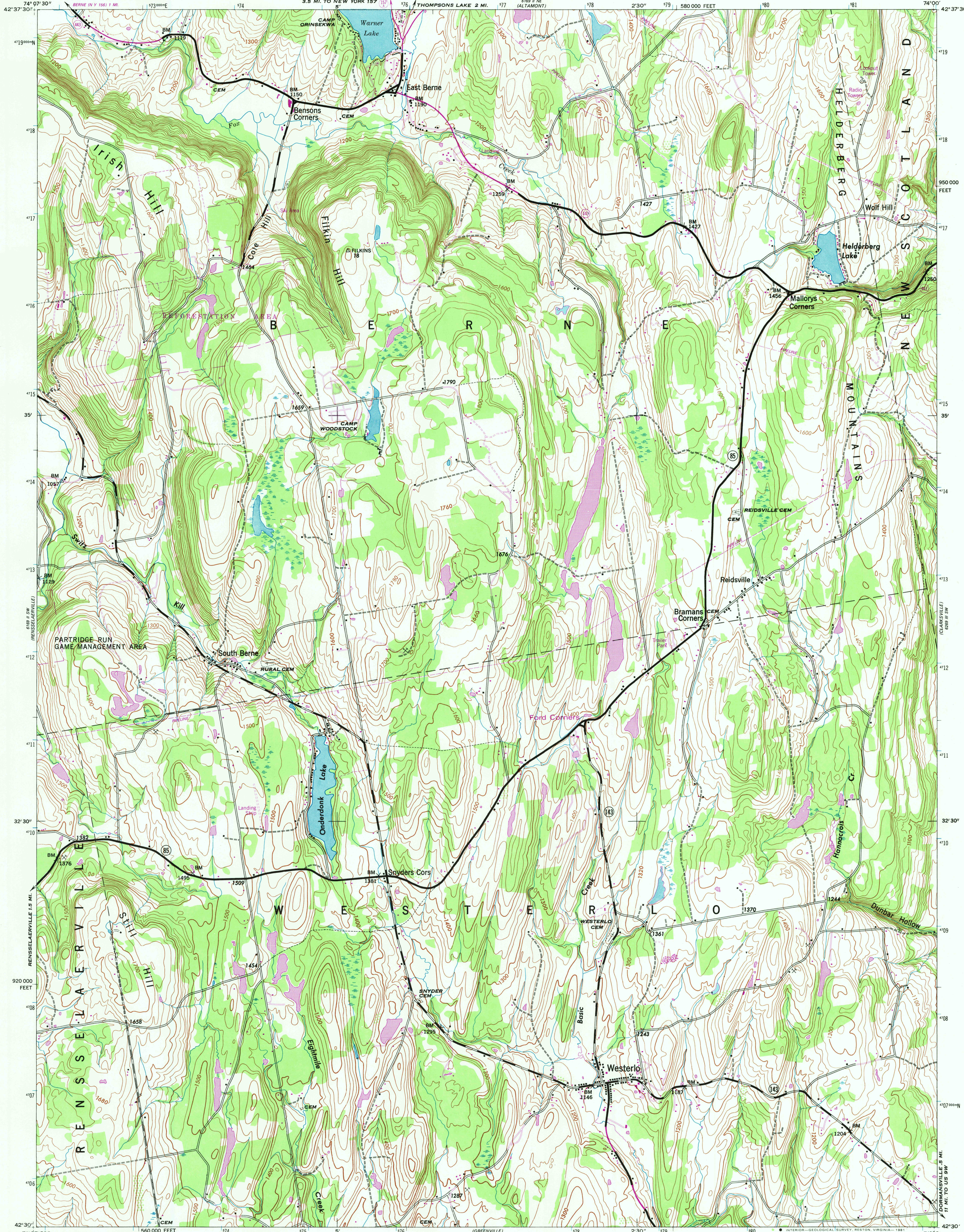


UNITED STATES
DEPARTMENT OF THE INTERIOR
GEOLOGICAL SURVEY

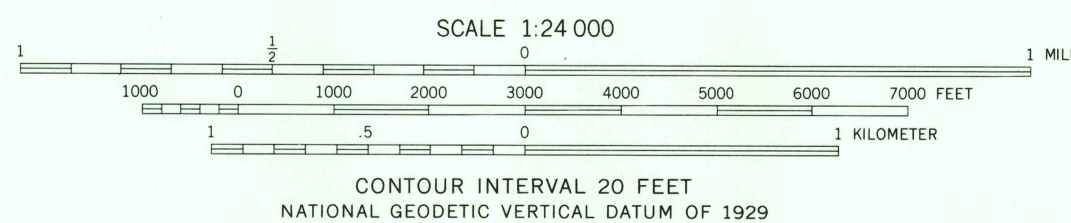
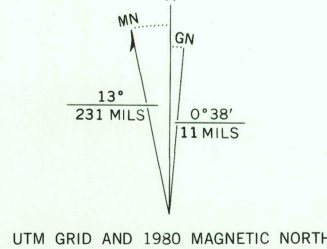
WESTERLO QUADRANGLE
NEW YORK-ALBANY CO.
7.5 MINUTE SERIES (TOPOGRAPHIC)



Mapped by the Tennessee Valley Authority under direction of the
Chief of Engineers, U.S. Army, 1944

Control by NOS/NOAA and TVA
Topography by U. S. Geological Survey and Tennessee Valley
Authority by photogrammetric methods from aerial
photographs taken 1943. Field checked 1943 by TVA
Polyconic projection. 10,000-foot grid based on New York
coordinate system, east zone. 1000-meter Universal
Transverse Mercator grid ticks, zone 18, shown
in blue. 1927 North American Datum. To place
on the predicted North American Datum 1983 move
the projection lines 5 meters south and 34 meters
west as shown by dashed corner ticks.
There may be private inholdings within the boundaries of
the National or State reservations shown on this map

Revisions shown in purple compiled by the Geological Survey
from photographs taken 1978. This information not
field checked. Map edited 1980



THIS MAP COMPLIES WITH NATIONAL MAP ACCURACY STANDARDS
FOR SALE BY U. S. GEOLOGICAL SURVEY, RESTON, VIRGINIA 22092
A FOLDER DESCRIBING TOPOGRAPHIC MAPS AND SYMBOLS IS AVAILABLE ON REQUEST



ROAD CLASSIFICATION
Heavy-duty ——— Light-duty ———
Medium-duty ——— Unimproved dirt ———
Interstate Route U. S. Route State Route

WESTERLO, N. Y.
N4230-W7400/7.5
1943
PHOTOREVISED 1980
DMA 6169 II SE-SERIES V821

USGS
HISTORICAL FILE
NATIONAL MAP DIVISION
JUN 26 1981

1950