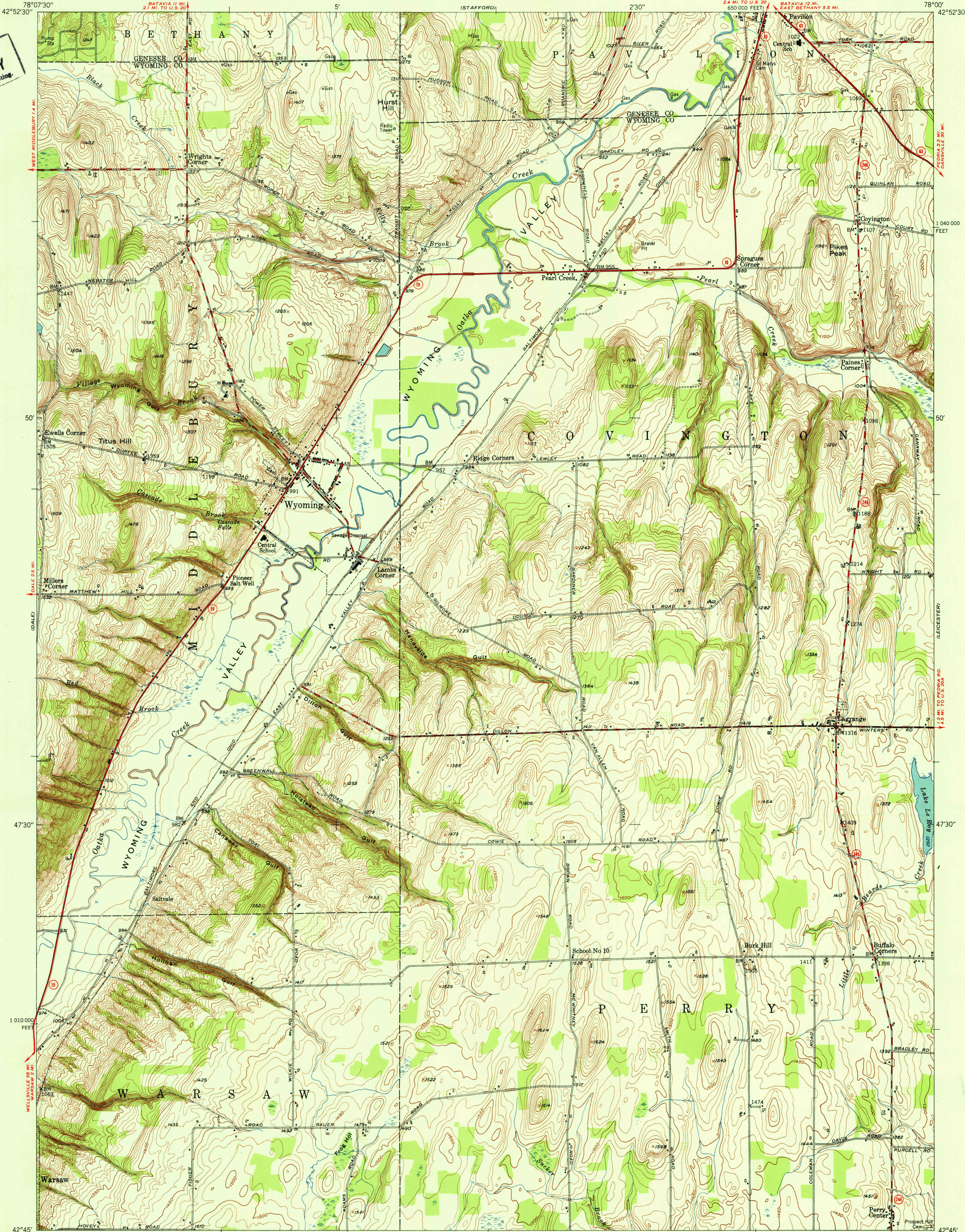
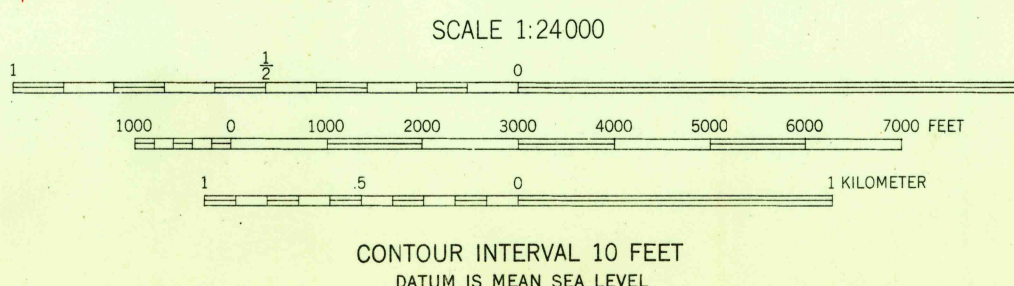


U. S. G. S.
FILE COPY
Inspection and Editing



Maped, edited, and published by the Geological Survey
Control by USGS, USC&GS, and USED
Culture and drainage in part compiled by Corps of Engineers,
Dept. of the Army, from aerial photographs taken 1942
Topography by plane-table methods 1949
Polyconic projection. 1927 North American datum
10,000-foot grid based on New York coordinate system,
west zone

APPROXIMATE MEAN
DECLINATION, 1949



CONTOUR INTERVAL 10 FEET
DATUM IS MEAN SEA LEVEL

USGS
Historical File
Topographic Division

ROAD CLASSIFICATION
Heavy-duty... 4 LANE 18 LANE Light duty...
Medium-duty... 4 LANE 18 LANE Unimproved dirt...
U. S. Route State Route

U. S. G. S.
FILE COPY
Inspection and Editing

WYOMING, N. Y.
SE/4 BATAVIA 15' QUADRANGLE
N4245-W7800/7.5
EDITION OF 1951

THIS MAP COMPLIES WITH NATIONAL MAP ACCURACY STANDARDS
FOR SALE BY U. S. GEOLOGICAL SURVEY, WASHINGTON 25, D. C.
A FOLDER DESCRIBING TOPOGRAPHIC MAPS AND SYMBOLS IS AVAILABLE ON REQUEST