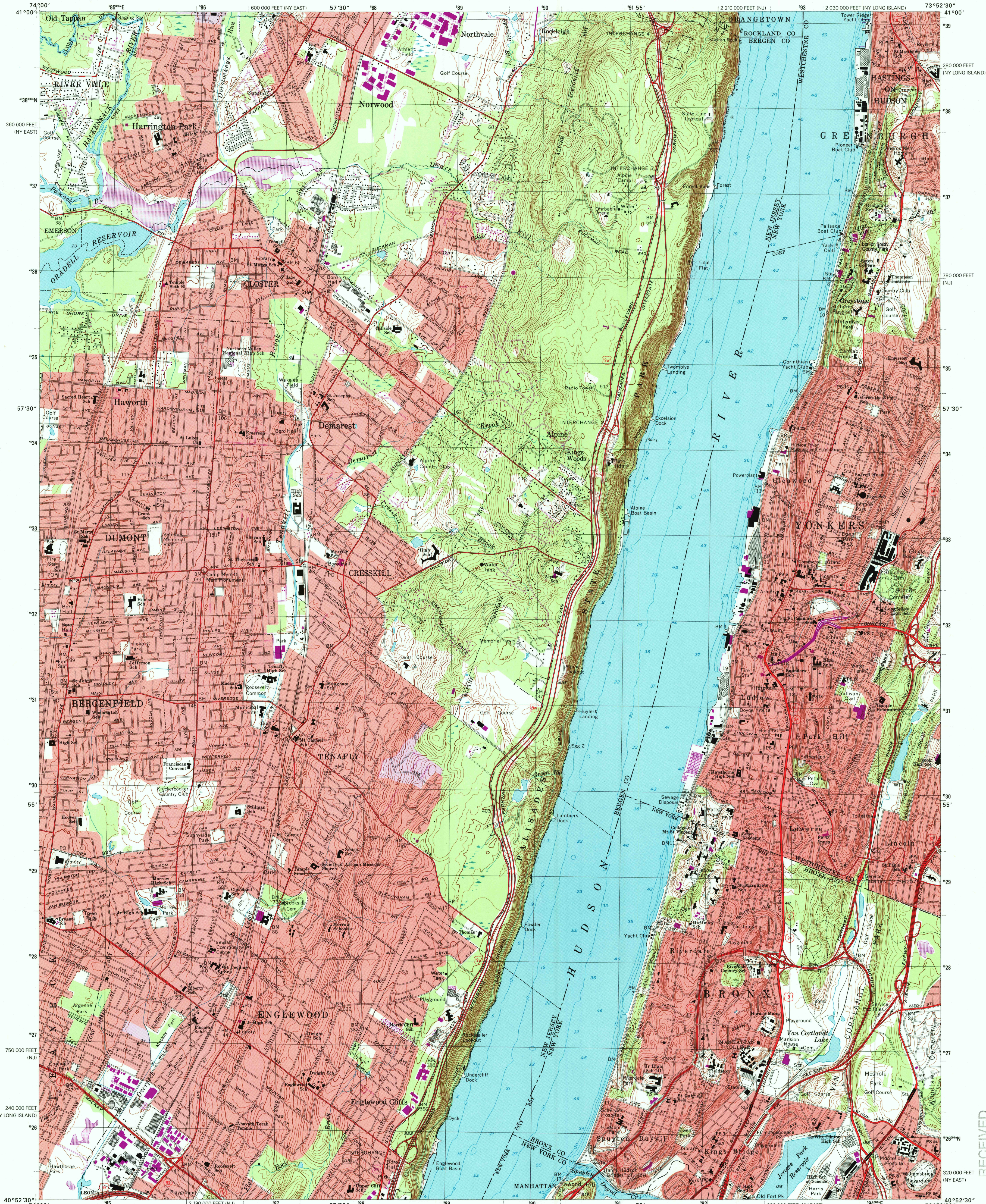




U.S. DEPARTMENT OF THE INTERIOR  
U.S. GEOLOGICAL SURVEY

YONKERS QUADRANGLE  
NEW YORK-NEW JERSEY  
7.5-MINUTE SERIES (TOPOGRAPHIC)

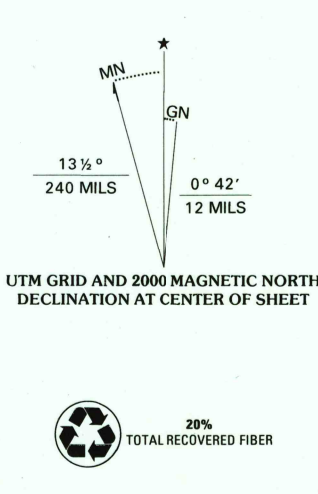


RECEIVED

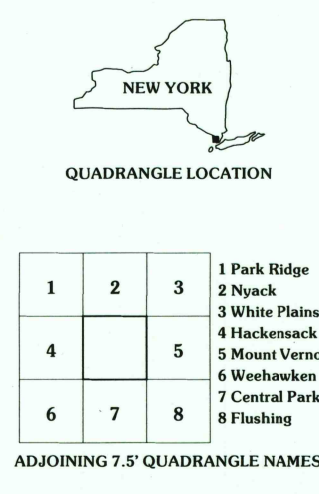
SEP 30 2000

USGS NAD  
HISTORICAL MAP ARCHIVES

Produced by the United States Geological Survey  
Topography compiled 1966. Planimetry derived from imagery taken 1977 and other sources. Photospectroscopy imagery dated 1998; no major culture or drainage changes observed. Survey control current as of 1966. Boundaries, other than corporate, revised 2000  
North American Datum of 1927 (NAD 27)  
Projection: New Jersey coordinate system (transverse Mercator)  
10 000-foot ticks: New Jersey coordinate system, and New York coordinate system, east and Long Island zones  
1000-meter Universal Transverse Mercator grid, zone 18  
North American Datum of 1983 (NAD 83) is shown by dashed corner ticks. The values of the shift between NAD 27 and NAD 83 for 7.5-minute intersections are obtainable from National Geodetic Survey NADCON software  
There may be private inholdings within the boundaries of the National or State reservations shown on this map  
Information shown in purple may not meet USGS content standards and may conflict with previously mapped contours



SCALE 1:24 000  
Kilometers 0 0.5 1 2  
Meters 0 500 1000 2000  
Miles 0 1 2  
Feet 0 1000 2000 3000 4000 5000 6000 7000 8000 9000 10000  
CONTOUR INTERVAL 10 FEET  
NATIONAL GEODETIC VERTICAL DATUM OF 1929  
TO CONVERT FROM FEET TO METERS, MULTIPLY BY 0.3048  
DEPTH CURVES AND SOUNDINGS IN FEET DATUM IS MEAN LOWER LOW WATER  
THE RELATIONSHIP BETWEEN THE TWO DATUMS IS VARIABLE  
MEAN RANGE OF TIDE IS APPROXIMATELY 3.7 FEET  
THIS MAP COMPLIES WITH NATIONAL MAP ACCURACY STANDARDS  
FOR SALE BY U.S. GEOLOGICAL SURVEY, P.O. BOX 25286, DENVER, COLORADO 80225  
A FOLDER DESCRIBING TOPOGRAPHIC MAPS AND SYMBOLS IS AVAILABLE ON REQUEST



ROAD CLASSIFICATION  
Primary highway  
hard surface  
Secondary highway  
hard surface  
Light-duty road, hard or  
improved surface  
Unimproved road  
Interstate Route  
U.S. Route  
State Route  
YONKERS, NY-NJ  
1998  
NIMA 6265 IV NW-SERIES V821

