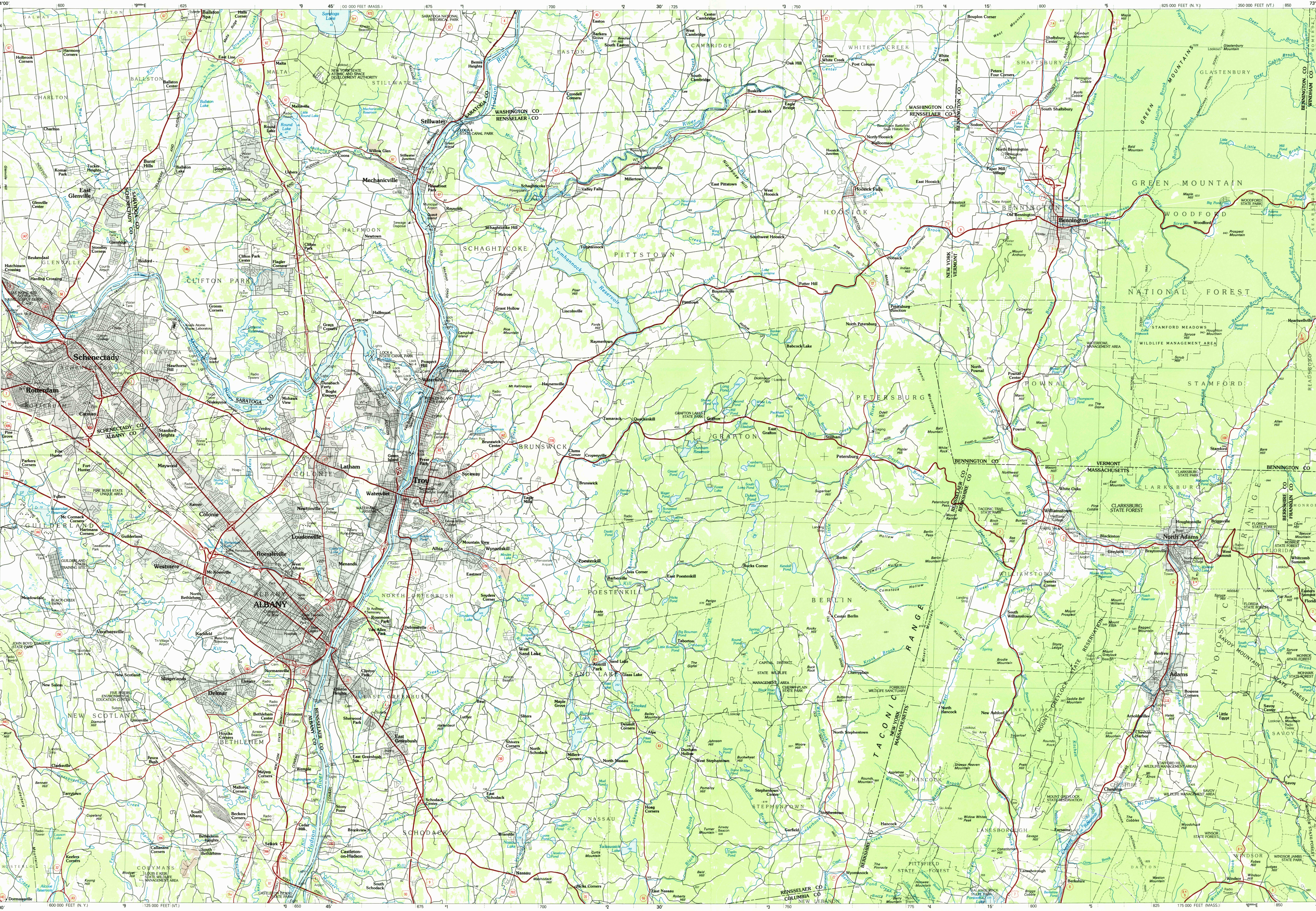
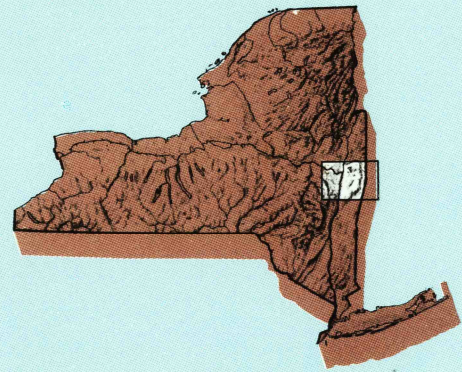


ALBANY, NEW YORK—MASSACHUSETTS—VERMONT

30 X 60 MINUTE SERIES (PLANIMETRIC)

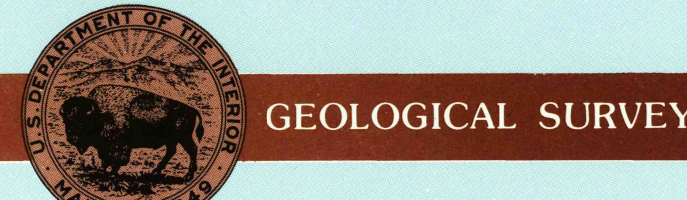


Albany
NEW YORK—MASSACHUSETTS—VERMONT
1:100 000-scale
planimetric map



30 X 60 MINUTE QUADRANGLE
SHOWING

- Elevations in meters
- Highways, roads and other manmade structures
- Water features
- Woodland areas
- Geographic names



1986

Produced by the United States Geological Survey

Compiled from USGS 1:24 000-scale topographic maps dated 1945–1980. Planimetry revised from aerial photographs taken 1982 and other source data. Revised information not field checked. Map edited 1986.
Projection and 10 000-meter grid, zone 18 Universal Transverse Mercator
25 000-foot grid ticks based on New York coordinate system, east zone, Massachusetts coordinate system maintained zone and Vermont coordinate system 1927 North American Datum
To place on the predicted North American Datum 1983 move the projection lines 5 meters south and 35 meters west. There may be private inholdings within the boundaries of the National or State reservations shown on this map.

NATIONAL GEODETIC VERTICAL DATUM OF 1929
ELEVATIONS SHOWN TO THE NEAREST METER

THIS MAP COMPLIES WITH NATIONAL MAP ACCURACY STANDARDS

CONVERSION TABLE

Meters	Feet
1	3.2808
2	6.5617
3	9.8425
4	13.1234
5	16.4042
6	19.6850
7	22.9659
8	26.2467
9	29.5276
10	32.8084

To convert meters to feet multiply by 3.2808

To convert feet to meters multiply by 0.3048

DECLINATION DIAGRAM

UTM grid convergence (GM) and 1983 magnetic declination (MM) at center of map

Diagram is approximate

ADJOINING MAPS

1	2	3
4	5	
6	7	8

1 Gloverville

2 Cress Falls

3 Claremont

4 Amsterdam

5 Rome

6 Peapack Reservoir

7 Pinedale

8 Holyoke

FOR SALE BY U. S. GEOLOGICAL SURVEY, DENVER, COLORADO 80225
OR RESTON, VIRGINIA 22092

Topographic Map Symbols

Primary highway, hard surface	
Secondary highway, hard surface	
Light duty road, principal street, hard or improved surface	
Other road or street; trail	
Route marker; interstate; U. S. State	
Railroad; standard gauge; narrow gauge	
Bridge; overpass; underpass	
Tunnel; road; railroad	
Built up area; locality; elevation	
Airport; landing field; landing strip	
National boundary	
State boundary	
County boundary	
National or State reservation boundary	
Land grant boundary	
U. S. public lands survey; range, township; section	
Range, township; section line; protected	
Power transmission line; pipeline	
Dam; dam with lock	
Cemetery; building	
Windmill; water well; spring	
Mine shaft; adit or cave; mine, quarry; gravel pit	
Campground; picnic area; U. S. location monument	
Railroad; off switching	
Distorted surface; strip mine, lava, sand	
Contours; index; intermediate; supplementary	
Bathymetric contours; index; intermediate	
Stream, lake; perennial; intermittent	
Rapids, large and small; falls, large and small	
Area to be submerged; marsh, swamp	
Land subject to controlled inundation; woodland	
Scrub; mangrove	
Orchard; vineyard	

A pamphlet describing topographic maps is available on request

U.S. N.M. HISTORICAL MAP
Nov 17 1986
REC'D FILE COPY