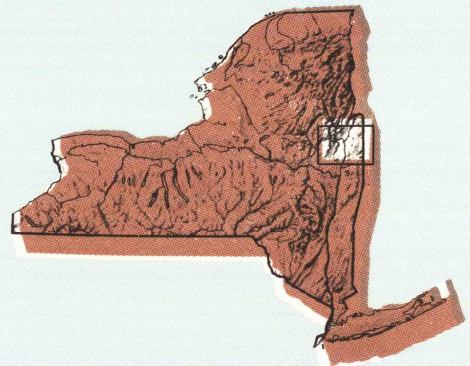


GLENS FALLS, NEW YORK-VERMONT

30 X 60 MINUTE SERIES (PLANIMETRIC)

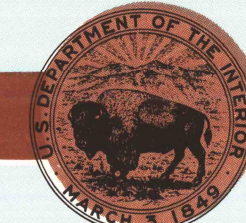
Glens Falls  
NEW YORK-VERMONT

1:100 000-scale  
planimetric map



30 X 60 MINUTE QUADRANGLE  
SHOWING

- Elevations in meters
- Highways, roads and other manmade structures
- Water features
- Woodland areas
- Geographic names



GEOLOGICAL SURVEY

1986

Produced by the United States Geological Survey

Compiled from USGS 1:24 000-scale topographic maps dated 1944-1968. Planimetry revised from aerial photographs taken 1979 and other source data. Revised information not field checked. Map edited 1986.

Projection and 10 000-meter grid, zone 18. Universal Transverse Mercator. 25 000-foot grid ticks based on New York coordinate system, east zone and Vermont coordinate system 1927 North American Datum. To place on the predicted North American Datum 1983 move the projection lines 4 meters south and 35 meters east. There may be private inholdings within the boundaries of the National or State reservations shown on this map.

NATIONAL GEODETIC VERTICAL DATUM OF 1929  
ELEVATIONS SHOWN TO THE NEAREST METER

THIS MAP COMPLIES WITH NATIONAL MAP ACCURACY STANDARDS

CONVERSION TABLE		DECLINATION DIAGRAM		ADJOINING MAPS				
Meters	Fath			1	2	3	4	5
1	3.2808							
2	5.3147							
3	6.9129							
4	13.1234							
5	18.4042							
6	19.6850							
7	22.9659							
8	22.8627							
9	26.5776							
10	32.8084							
To convert meters to feet multiply by 3.2808								
To convert feet to meters multiply by 0.3048								
				1. Route Lake				
				2. Thunders				
				3. Rutland				
				4. Gloverville				
				5. Champlain				
				6. Albany				
				7. Keene				

FOR SALE BY U.S. GEOLOGICAL SURVEY, DENVER, COLORADO 80225  
OR RESTON, VIRGINIA 22092

USGS NMD HISTORICAL MAP

AUG 25 1986

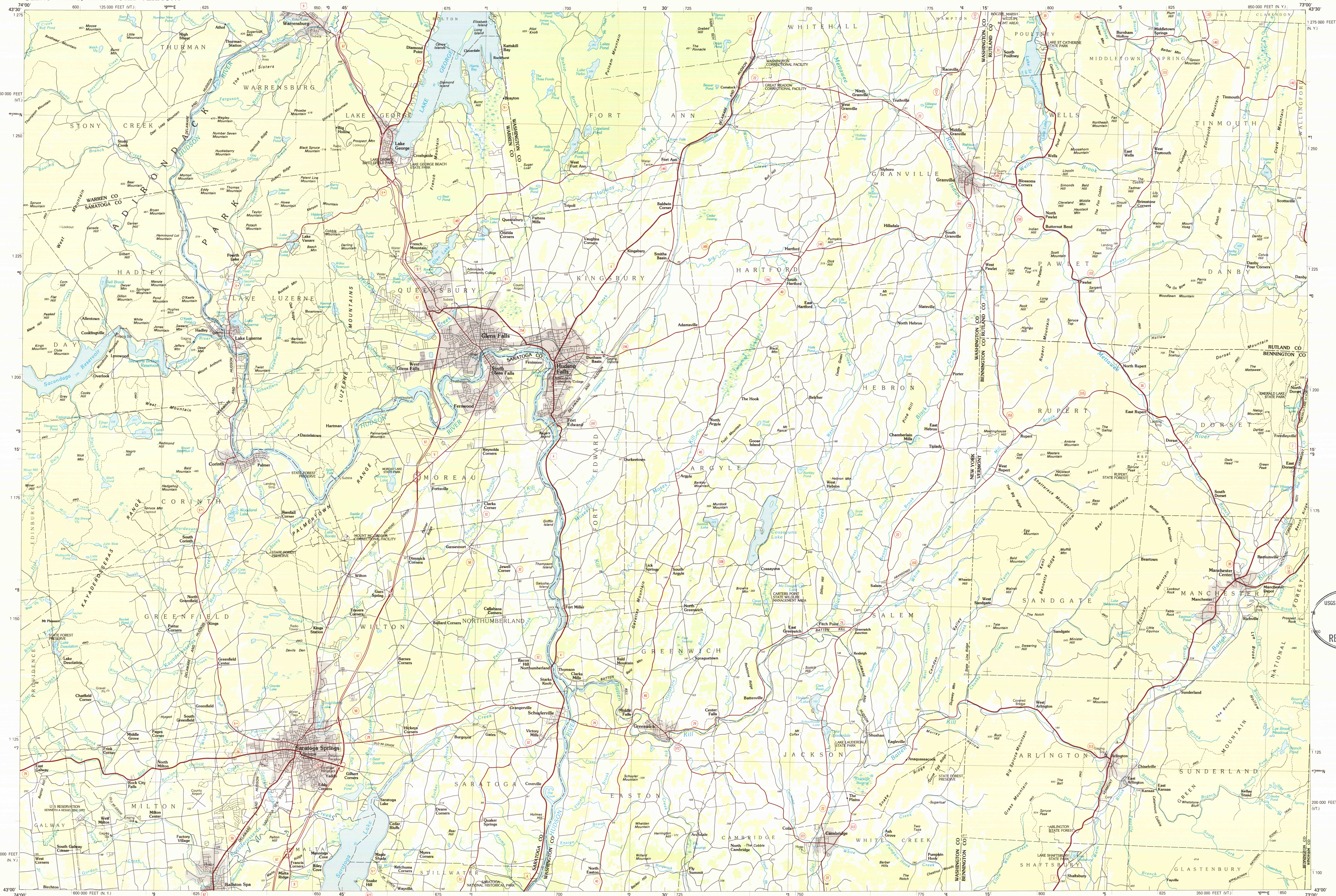
REC'D FILE COPY

Topographic Map Symbols

- Primary highway, hard surface
- Secondary highway, hard surface
- Light duty road, principal street, hard or improved surface
- Other road or street, mail
- Route marker: Interstate, U. S. State
- Railroad: standard gauge; narrow gauge
- Bridge: overpass; underpass
- Tunnel: road, railroad
- Built up area, locality, elevation
- Airport; landing field; landing strip
- National boundary
- State boundary
- County boundary
- National or State reservation boundary
- Land grant boundary
- U. S. public lands survey: range, township, section
- Range, township, section line: protected
- Power transmission line: pipeline
- Dam; dam with lock
- Cemetery: building
- Windsail; water with spring
- Mine shaft; old or new; mine, quarry, gravel pit
- Campground; picnic area; U. S. location monument
- Ruins; cliff dwelling
- Distorted surface: strip mine, lava, sand
- Contours: index, intermediate, supplementary
- Bathymetric contours: index, intermediate
- Stream, lake: perennial, intermittent
- Rapids, large and small; falls, large and small
- Area to be submerged: marsh, swamp
- Land subject to controlled inundation; woodland
- Sand; meadow
- Orchard; vineyard

A pamphlet describing topographic maps is available on request

GLENS FALLS, NEW YORK-VERMONT  
43073-A1-PL-100  
1986



INTERIOR GEOLOGICAL SURVEY, RESTON, VIRGINIA 22092

SCALE 1:100 000  
1 CENTIMETER ON THE MAP REPRESENTS 1 KILOMETER ON THE GROUND

0 1000 2000 3000 4000 5000 6000 7000 METERS  
0 1 2 3 4 5 6 7 8 9 10 11 12 13 MILES