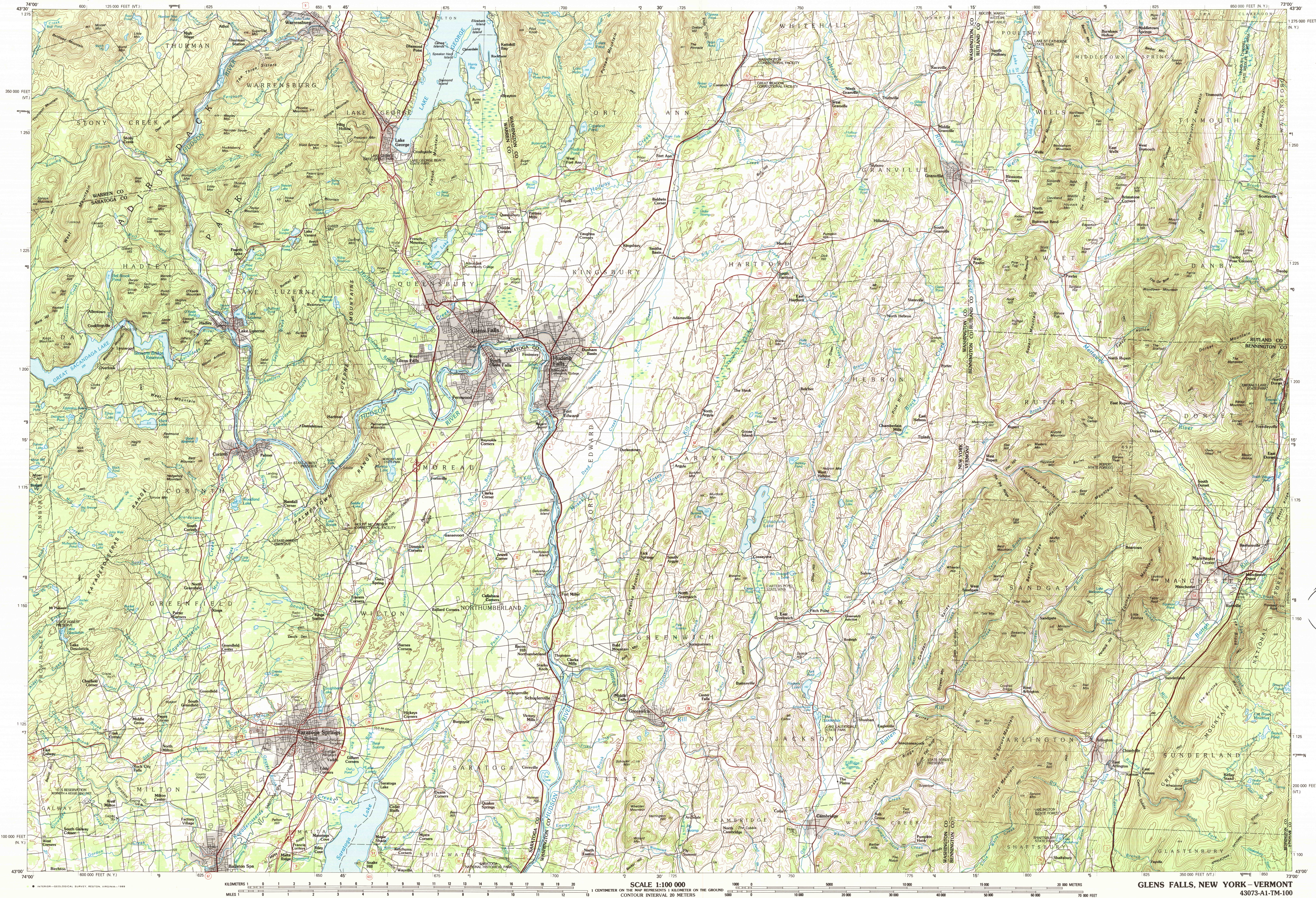


GLENS FALLS, NEW YORK-VERMONT

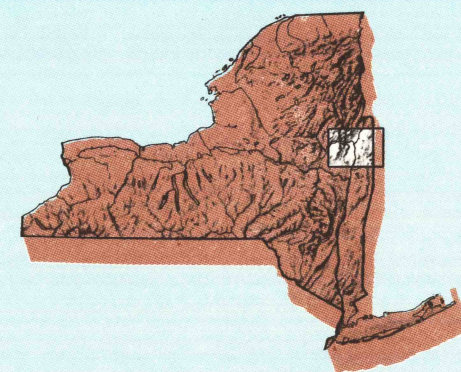
30 x 60 MINUTE SERIES (TOPOGRAPHIC)



Glens Falls

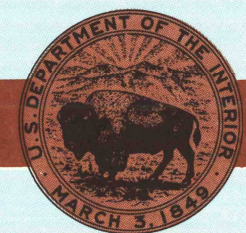
NEW YORK-VERMONT

1:100 000-scale metric
topographic map



30 x 60 MINUTE QUADRANGLE
SHOWING

- Contours and elevations in meters
- Highways, roads and other manmade structures
- Water features
- Woodland areas
- Geographic names



GEOLOGICAL SURVEY

1989


Produced by the United States Geological Survey

Compiled from USGS 1:24 000-scale topographic maps dated 1944-1968. Planimetry revised from aerial photographs taken 1965-86 and other source data. Revised information not field checked. Map edited 1989.

Projection and 10 000-meter grid, zone 18 Universal Transverse Mercator. 25 000-foot grid ticks based on New York coordinate system, east zone and Vermont coordinate system 1927 North American Datum. To place on the predicted North American Datum 1983 move the projection lines 4 meters south and 35 meters east. There may be private inholdings within the boundaries of the National or State reservations shown on this map.

CONTOUR INTERVAL 20 METERS
NATIONAL GEODETIC VERTICAL DATUM OF 1929
ELEVATIONS SHOWN TO THE NEAREST METER

THIS MAP COMPLIES WITH NATIONAL MAP ACCURACY STANDARDS

CONVERSION TABLE		DECLINATION DIAGRAM	ADJOINING MAPS			
Meters	Feet		1	2	3	
1	3.2808		1	2	3	
2	6.5617		4	5		
3	9.8425					
4	13.1234					
5	16.4042					
6	19.6850					
7	22.9659					
8	26.2467					
9	29.5276					
10	32.8084					
To convert meters to feet multiply by 3.2808		UTM grid convergence (GN) and 1983 magnetic declination (MD) at center of map. Diagram is approximate.	1	2	3	
To convert feet to meters multiply by 0.3048			4	5		
			6	7	8	

1	Rquette Lake
2	Ticonderoga
3	Rutland
4	Claverville
5	Claremont
6	Amsterdam
7	Albany
8	Keene

FOR SALE BY U. S. GEOLOGICAL SURVEY, DENVER, COLORADO 80225 OR RESTON, VIRGINIA 22092

USGS NHD HISTORICAL MAP

JUN 21 1989

REC'D FILE COPY

Topographic Map Symbols

Primary highway, hard surface	Secondary highway, hard surface
Light duty road, principal street, hard or improved surface	Other road or street, trail
Route marker: Interstate, U. S., State	Railroad: standard gage, narrow gage
Bridge: overpass; underpass	Tunnel: road; railroad
Built up area, locality, elevation	Airport: landing field; landing strip
National boundary	State boundary
County boundary	National or State reservation boundary
Land grant boundary	U. S. public lands survey: range, township, section
Range, township, section line: protracted	Power transmission line: pipeline
Dam; dam with lock	Cemetery, building
Windmill; water well; spring	Mine shaft; adit or cave; mine, quarry; gravel pit
Campground; picnic area; U. S. location monument	Ruins; cliff dwelling
Distorted surface: strip mine, lava, sand	Contours: index, intermediate, supplementary
Bathymetric contours: index, intermediate	Stream, lake: perennial; intermittent
Rapids, large and small; falls, large and small	Area to be submerged; marsh, swamp
Land subject to controlled inundation; woodland	Scrub, mangrove
Orchard; vineyard	

A pamphlet describing topographic maps is available on request

GLENS FALLS, NEW YORK-VERMONT

43073-A1-TM-100

1989