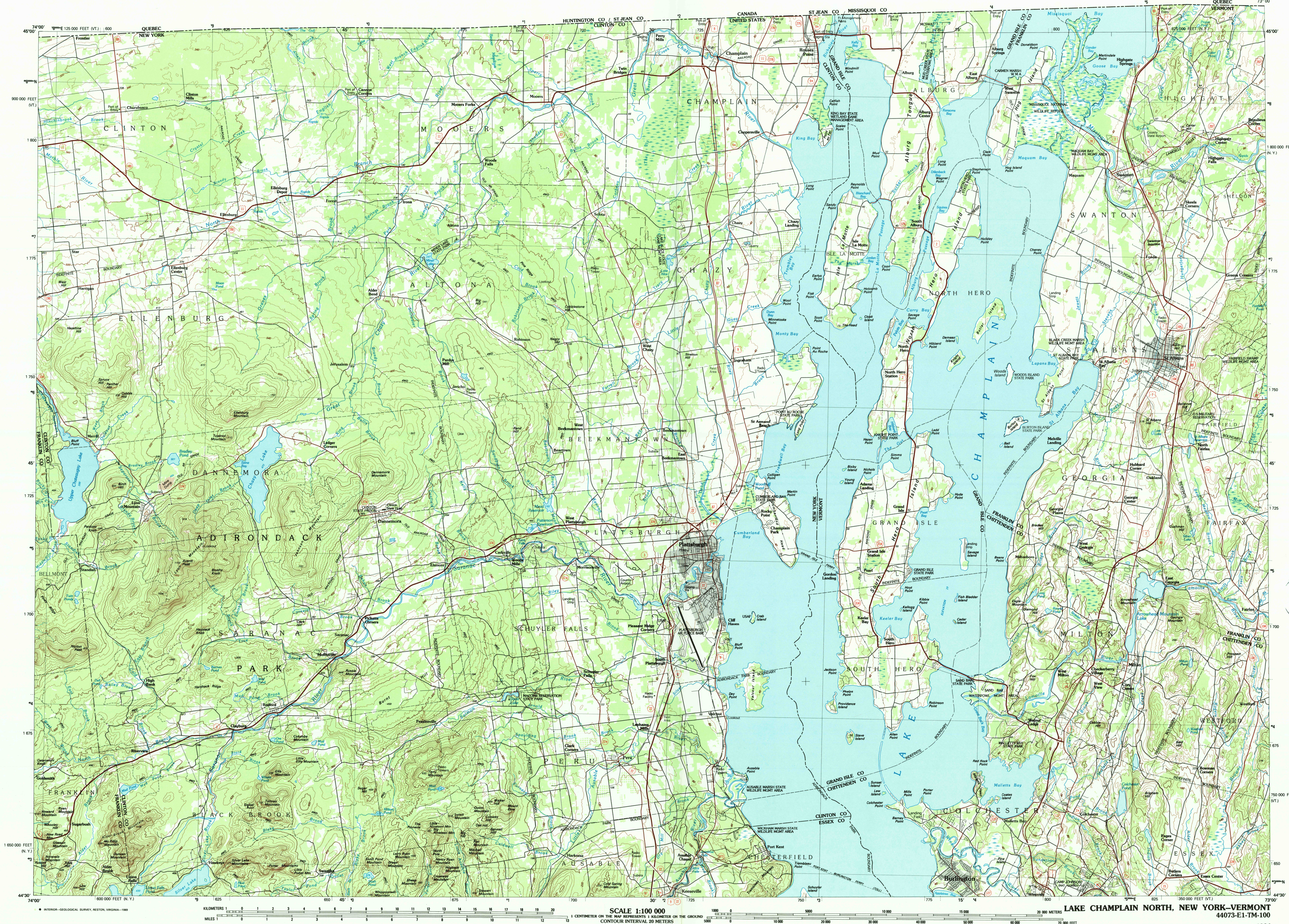


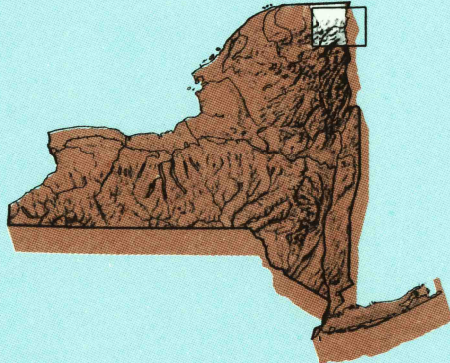
LAKE CHAMPLAIN NORTH, NEW YORK-VERMONT

30 X 60 MINUTE SERIES (TOPOGRAPHIC)



Lake Champlain North

NEW YORK-VERMONT

1:100 000-scale metric
topographic map30 X 60 MINUTE QUADRANGLE
SHOWING

- Contours and elevations in meters
- Highways, roads and other manmade structures
- Water features
- Woodland areas
- Geographic names



GEOLOGICAL SURVEY

1986

Produced by the United States Geological Survey

Compiled from USGS 1:24 000-scale topographic maps dated 1964-1972. Planimetry revised from aerial photographs taken 1981 and other source data. Revised information not field checked. Map edited 1986.

Projection and 10 000-meter grid, zone 18. Universal Transverse Mercator. 25 000-foot grid ticks based on New York coordinate system, east zone and Vermont coordinate system 1927 North American Datum. To place on the predicted North American Datum 1983 move the projection lines 1 meter south and 33 meters west. There may be private inholdings within the boundaries of the National or State reservations shown on this map.

CONTOUR INTERVAL 20 METERS
NATIONAL GEODETIC VERTICAL DATUM OF 1929
ELEVATIONS SHOWN TO THE NEAREST METER

THIS MAP COMPLIES WITH NATIONAL MAP ACCURACY STANDARDS

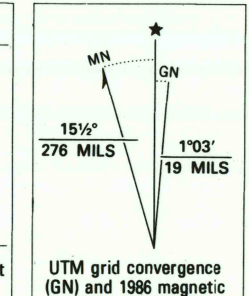
CONVERSION TABLE

Meters	Feet
1	3.2808
2	6.5617
3	9.8425
4	13.1234
5	16.4042
6	19.6850
7	22.9658
8	26.2467
9	29.5275
10	32.8084

To convert meters to feet multiply by 3.2808

To convert feet to meters multiply by 0.3048

DECLINATION DIAGRAM



UTM grid convergence (GN and 1986 magnetic declination (MD) at center of map. Diagram is approximate.

ADJOINING MAPS

1	2	3
4	5	6
7	8	9

4 Massena
5 Mount Mansfield
6 Tupper Lake
7 Lake Champlain
8 Montpelier

USGS NMD HISTORIC FOR SALE BY MAP GEOLOGICAL SURVEY, DENVER, COLORADO 80225 OR RESTON, VIRGINIA 22092

NOV 30 1989

REC'D FILE COPY

Topographic Map Symbols

Primary highway, hard surface	Secondary highway, hard surface	Light duty road, principal street, hard or improved surface	Other road or street, trail	Route marker, Interstate; U. S.; State	Railroad: standard gage; narrow gage	Bridge: overpass; underpass	Tunnel: road, railroad	Built up area; locality, elevation	Airport; landing field; landing strip	National boundary	State boundary	County boundary	National or State reservation boundary	Land grant boundary	U. S. public lands survey: range, township, section	Range, township, section line: protected	Power transmission line; pipeline	Dam; dam with lock	Cemetery; building	Windmill; water well; spring	Mine shaft; adit or cave; mine, quarry; gravel pit	Campground; picnic area; U. S. location monument	Ruins; cliff dwelling	Distorted surface: strip mine, lava, sand	Contours: index; intermediate; supplementary	Bathymetric contours: index; intermediate	Stream, lake, perennial; intermittent	Rapids, large and small; falls, large and small	Area to be submerged; marsh, swamp	Land subject to controlled inundation; woodland	Scrub; mangrove	Orchard; vineyard
-------------------------------	---------------------------------	---	-----------------------------	--	--------------------------------------	-----------------------------	------------------------	------------------------------------	---------------------------------------	-------------------	----------------	-----------------	--	---------------------	---	--	-----------------------------------	--------------------	--------------------	------------------------------	--	--	-----------------------	---	--	---	---------------------------------------	---	------------------------------------	---	-----------------	-------------------

A pamphlet describing topographic maps is available on request

SCALE 1:100 000

1 CENTIMETER ON THE MAP REPRESENTS 1 KILOMETER ON THE GROUND
CONTOUR INTERVAL 20 METERS

LAKE CHAMPLAIN NORTH, NEW YORK-VERMONT

44073-E1-TM-100

1986