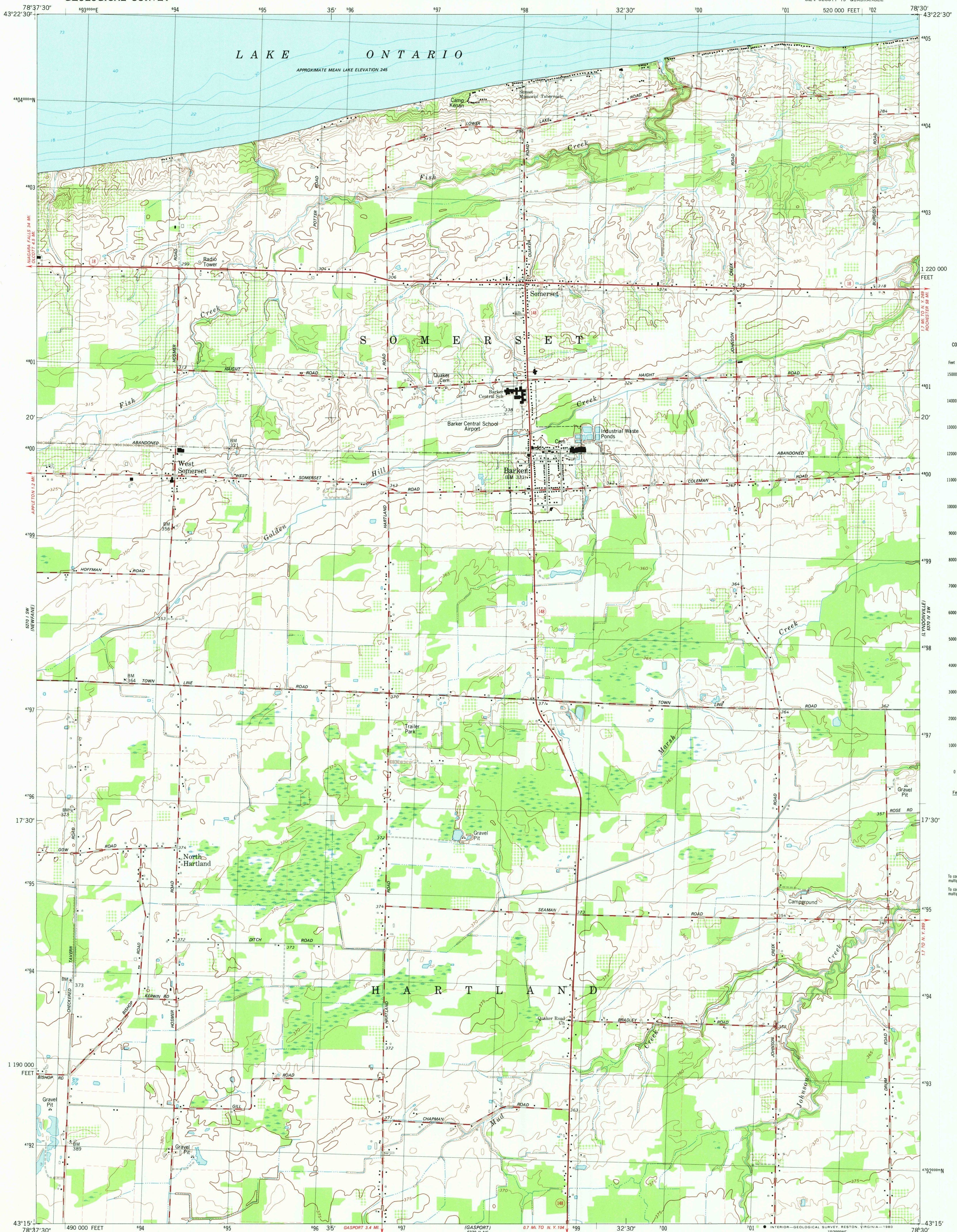


UNITED STATES  
DEPARTMENT OF THE INTERIOR  
GEOLOGICAL SURVEY

STATE OF NEW YORK  
DEPARTMENT OF TRANSPORTATION

BARKER QUADRANGLE  
NEW YORK-NIAGARA CO.  
7.5 MINUTE SERIES (TOPOGRAPHIC)  
SE/4 OLCOTT 15' QUADRANGLE



CONVERSION SCALES	
Feet	Meters
15000	4500
14000	4000
13000	3500
12000	3000
11000	2500
10000	2000
9000	1500
8000	1000
7000	900
6000	800
5000	700
4000	600
3000	500
2000	400
1000	300
0	0

Feet	Meters
1	3048
2	6096
3	9144
4	12192
5	15240
6	18288
7	21336
8	24384
9	27432
10	30480

To convert feet to meters multiply by 3048  
To convert meters to feet multiply by 3.2808

Mapped, edited, and published by the Geological Survey

Control by USGS and NOS/NOAA

Topography by photogrammetric methods from aerial photographs

taken 1972. Field checked 1973. Map edited 1980

Supersedes 1:24 000-scale map dated 1965

Selected hydrographic data compiled from NOS chart 14806 (1978)

This information is not intended for navigational purposes

Projection and 10,000-foot grid ticks: New York coordinate

system, west zone (transverse Mercator)

1000-meter Universal Transverse Mercator grid, zone 17

1927 North American Datum

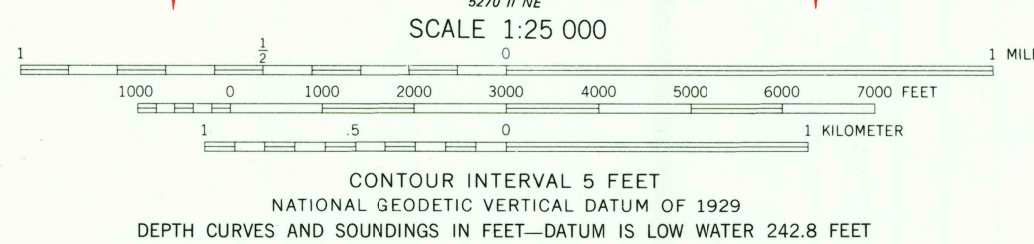
To place on the predicted North American Datum 1983

move the projection lines 2 meters south and

21 meters west as shown by dashed corner ticks

Fine red dashed lines indicate selected fence and field lines where

generally visible on aerial photographs. This information is unchecked



CONTOUR INTERVAL 5 FEET  
NATIONAL GEODETIC VERTICAL DATUM OF 1929  
DEPTH CURVES AND SOUNDINGS IN FEET-DATUM IS LOW WATER 242.8 FEET

ROAD CLASSIFICATION  
Primary highway, hard surface  
Secondary highway, hard surface  
Unimproved road  
Light-duty road, hard or improved surface  
Unimproved road  
Interstate Route  
U. S. Route  
State Route



USGS  
Historical File  
Topographic Division

BARKER, N. Y.  
SE/4 OLCOTT 15' QUADRANGLE  
N4315-W7830/7.5  
1980

DMA 5270 1 SE-SERIES V821

OCT - 3 1980