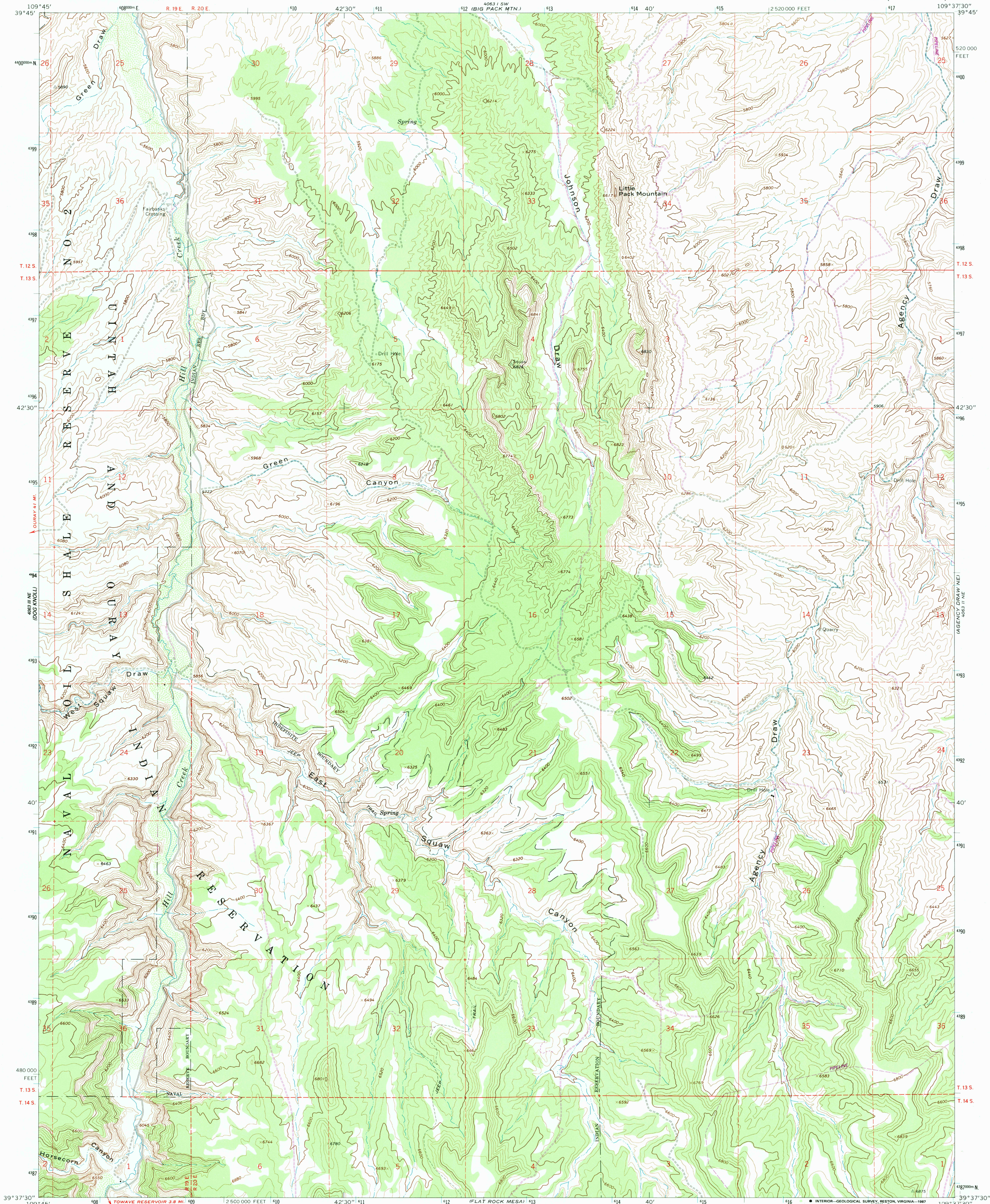


SCALE
(NOT TO SCALE)

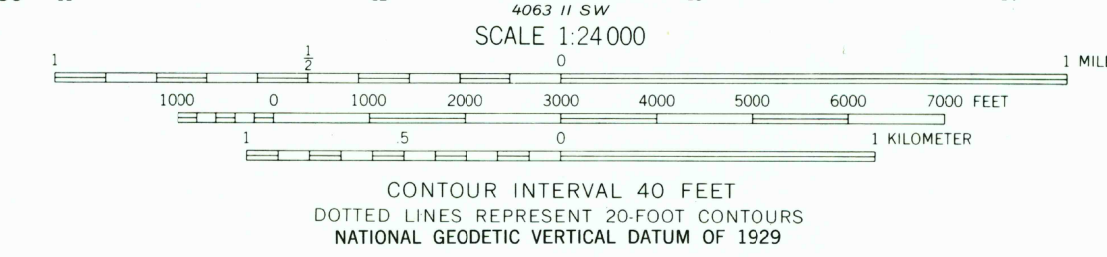
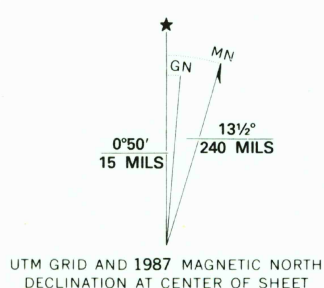
UNITED STATES
DEPARTMENT OF THE INTERIOR
GEOLOGICAL SURVEY

AGENCY DRAW NW QUADRANGLE
UTAH-UINTAH CO.
7.5 MINUTE SERIES (TOPOGRAPHIC)

4063 1 SE
(BIG PACK MTN. SE)



Maped, edited, and published by the Geological Survey
Control by USGS and USCGS
Topography by photogrammetric methods from aerial
photographs taken 1965. Field checked 1966
Polyconic projection. 1927 North American datum
10,000-foot grid based on Utah coordinate system,
central zone
1000-meter Universal Transverse Mercator grid ticks,
zone 12, shown in blue
To place on the predicted North American Datum 1983,
move the projection lines 7 meters north and
60 meters east as shown by dashed corner ticks
There may be private inholdings within the boundaries of
the National or State reservations shown on this map
Revisions shown in purple compiled from aerial photographs taken 1983 and
other sources. This information not field checked. Map edited 1987



ROAD CLASSIFICATION
Light-duty road, all weather, Unimproved road, fair or dry
improved surface weather

AGENCY DRAW NW, UTAH
39109-F6-TF-024

1966
PHOTOREVISED 1987
DMA 4063 11 NW-SERIES V897

THIS MAP COMPLIES WITH NATIONAL MAP ACCURACY STANDARDS
FOR SALE BY U.S. GEOLOGICAL SURVEY, DENVER, COLORADO 80225, OR RESTON, VIRGINIA 22092
A FOLDER DESCRIBING TOPOGRAPHIC MAPS AND SYMBOLS IS AVAILABLE ON REQUEST

WOLF POINT
4063 1 SE
REPROD FILE COPY
U.S. GEOLOGICAL SURVEY
1987