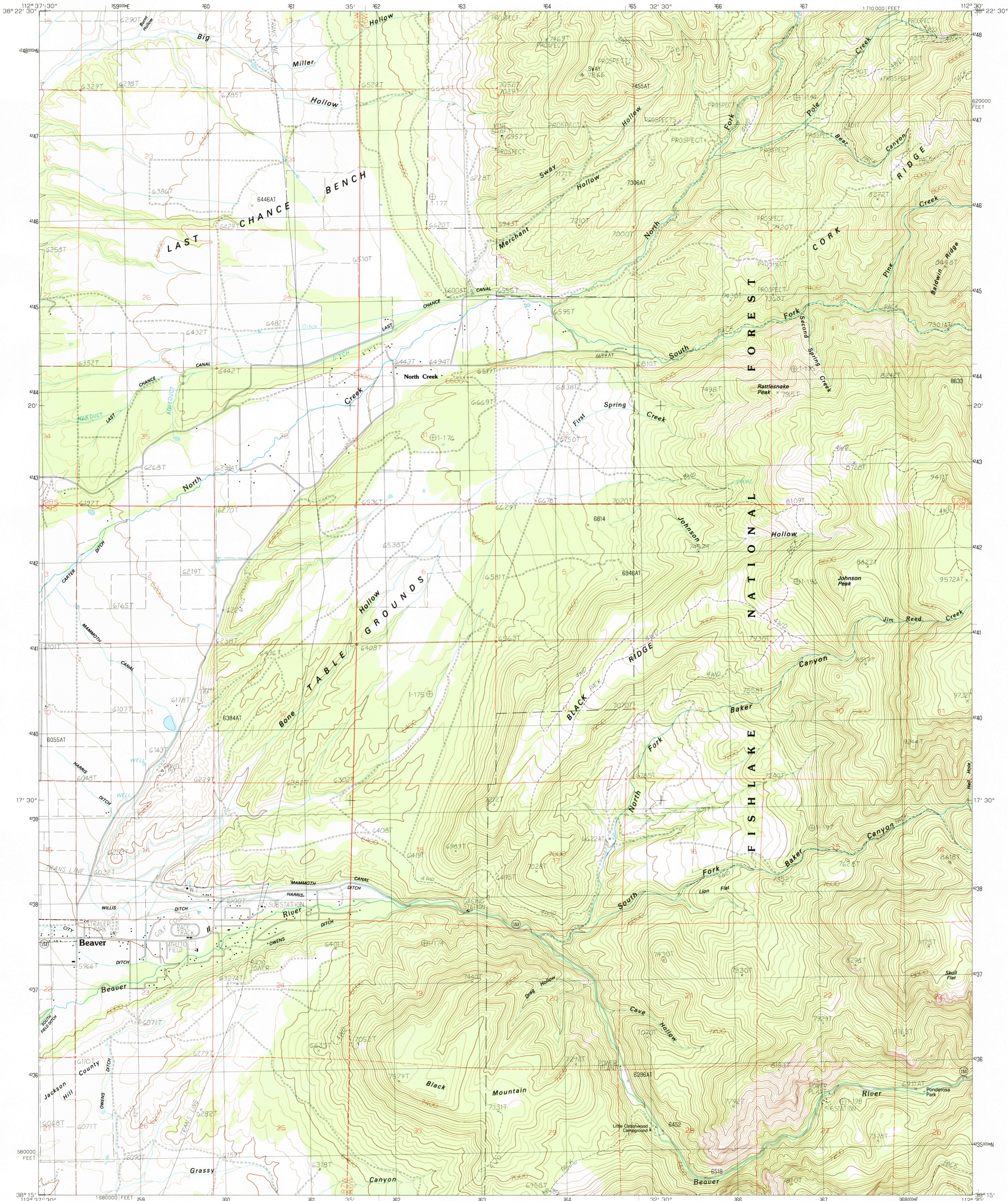


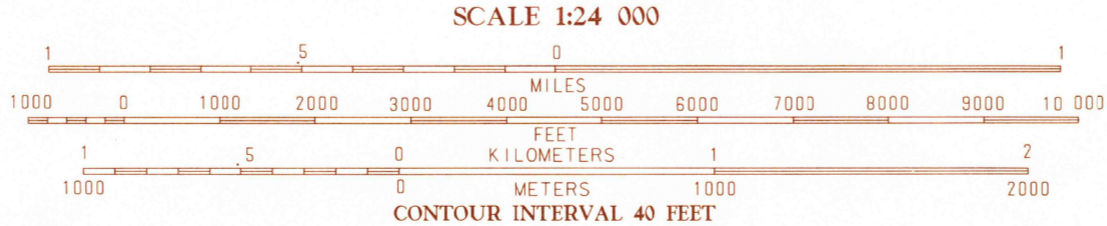
UNITED STATES  
DEPARTMENT OF THE INTERIOR  
GEOLOGICAL SURVEY

BLACK RIDGE QUADRANGLE  
UTAH-BEAVER CO.  
7.5 MINUTE SERIES (TOPOGRAPHIC)



PRODUCED BY THE UNITED STATES GEOLOGICAL SURVEY  
CONTROL BY THE UNITED STATES GEOLOGICAL SURVEY  
COMPILED FROM AERIAL PHOTOGRAPHS TAKEN . . . . . 1983  
FIELD CHECKED . . . . . 1984 MAP EDITED . . . . . 1987  
PROJECTION . . . . . LAMBERT CONFORMAL CONIC  
GRID: 100-METER UNIVERSAL TRANSVERSE MERCATOR . . . . .  
HORIZONTAL DATUM . . . . . 1983 NORTH AMERICAN DATUM  
VERTICAL DATUM . . . . . 1929 NORTH AMERICAN DATUM  
To place on the predicted North American Datum of 1983,  
move the projection lines as shown by dashed corner ticks  
(7 meters north and 67 meters east)  
There may be private inholdings within the boundaries of any  
Federal and State Reservations shown on this map.  
No distinction made between houses, barns, and other buildings.  
All marginal data and lettering generated and positioned by  
automated type placement procedures

PROVISIONAL MAP  
Produced from original  
manuscript drawings. Infor-  
mation shown as of date of  
photography.



1	2	3	1	Gilbes Hill
4	5	6	2	Pole Mountain
7	8	9	3	Mount Bellamy
			4	Beaver
			5	Shells Baldy Peak
			6	Greenville Bench
			7	Kane Canyon
			8	Cinderella Mountain

ADJOINING 7.5' QUADRANGLE NAMES

ROAD LEGEND  
Improved Road . . . . .  
Unimproved Road . . . . .  
Trail . . . . .  
Interstate Route U.S. Route State Route

BLACK RIDGE, UTAH  
PROVISIONAL EDITION 1987

38112-C5-TF-024

