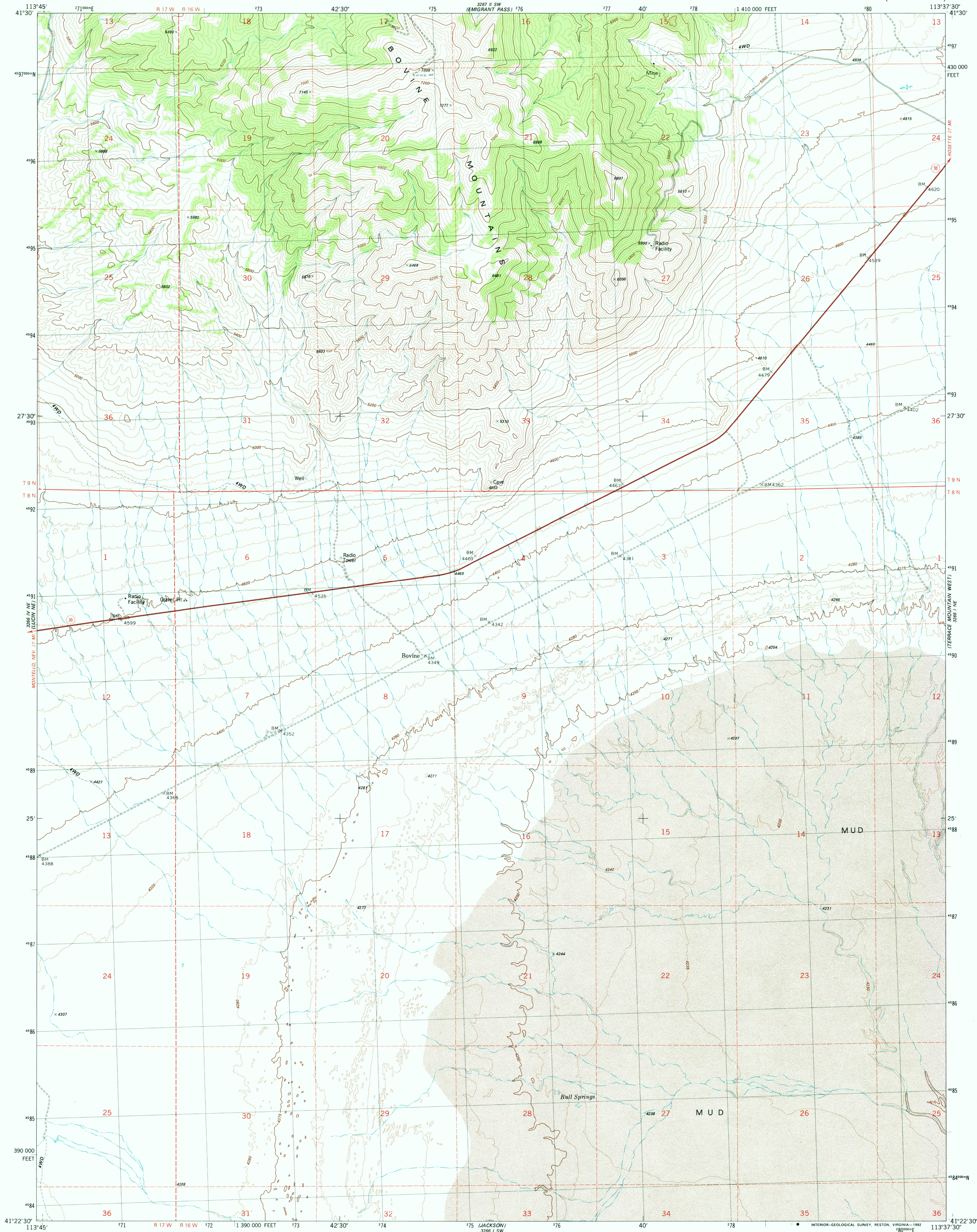
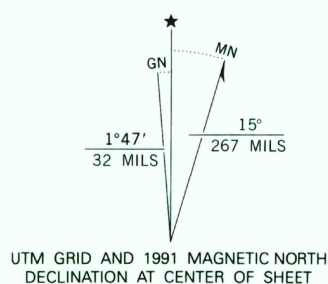


UNITED STATES
DEPARTMENT OF THE INTERIOR
GEOLOGICAL SURVEY

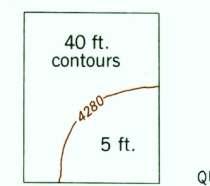
BOVINE QUADRANGLE
UTAH—BOX ELDER CO.
7.5 MINUTE SERIES (TOPOGRAPHIC)



Produced by the United States Geological Survey
Control by USGS and NOS/NOAA
Compiled from aerial photographs taken 1973. Revised from aerial
photographs taken 1987. Field checked 1990. Map edited 1991
North American Datum of 1927 (NAD 27). Projection and
10 000-foot grid ticks: Utah Coordinate System, north zone
(Lambert Conformal Conic). 1000-meter Universal Transverse
Mercator grid, zone 12
The difference between NAD 27 and North American Datum of
1983 (NAD 83) for 7.5 minute intersections is given in USGS
Bulletin 1875. The NAD 83 is shown by dashed corner ticks



SCALE 1:24 000
1 000 0 1000 2000 3000 4000 5000 6000 7000 FEET
1 0 1 KILOMETER
CONTOUR INTERVAL 5 AND 40 FEET
NATIONAL GEODEIC VERTICAL DATUM OF 1929



ROAD CLASSIFICATION
Primary highway, hard surface
Secondary highway, hard surface
Unimproved road
Interstate Route
U. S. Route
State Route
Light-duty road, hard or improved surface

BOVINE, UTAH
41113-D6-TF-024

MAR 1992

1991

DMA 3266 I NW-SERIES V897