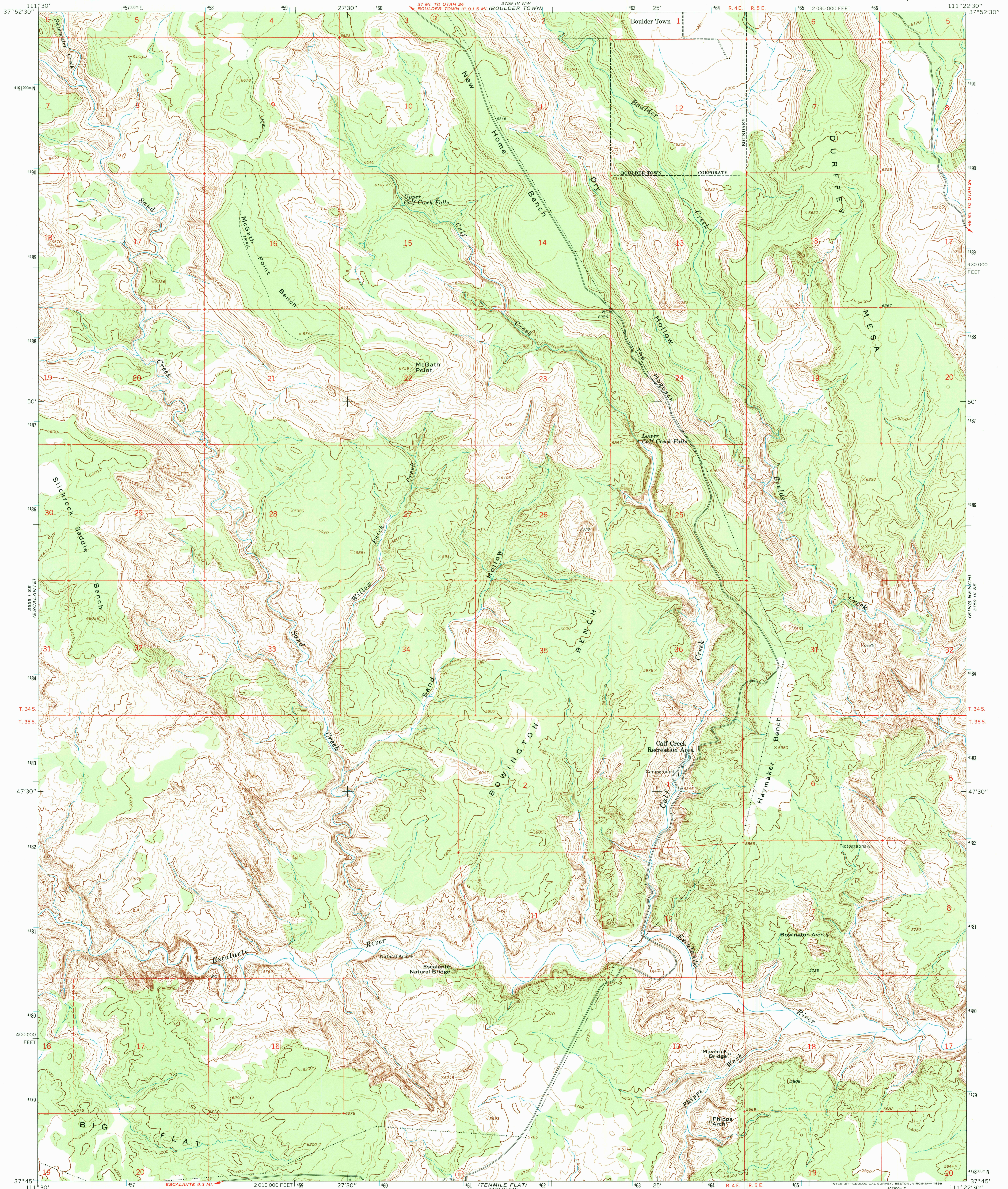
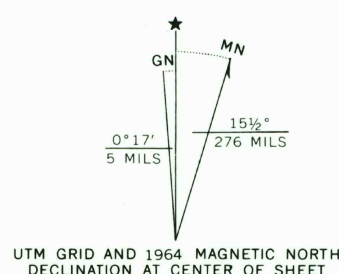


UNITED STATES
DEPARTMENT OF THE INTERIOR
GEOLOGICAL SURVEY

CALF CREEK QUADRANGLE
UTAH—GARFIELD CO.
7.5 MINUTE SERIES (TOPOGRAPHIC)



Maped, edited, and published by the Geological Survey
Control by USGS and USC&GS
Topography by photogrammetric methods from aerial
photographs taken 1958. Field checked 1964
Polyconic projection. 1927 North American datum
10,000-foot grid based on Utah coordinate system, south zone
1000-metre Universal Transverse Mercator grid ticks,
zone 12, shown in blue
Where omitted, land lines have not been established
Map photostated 1976
No major culture or drainage changes observed

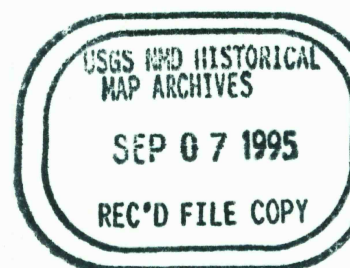


SCALE 1:24,000
CONTOUR INTERVAL 40 FEET
DOTTED LINES REPRESENT 20-FOOT CONTOURS
NATIONAL GEODETIC VERTICAL DATUM OF 1929

THIS MAP COMPLIES WITH NATIONAL MAP ACCURACY STANDARDS
FOR SALE BY U. S. GEOLOGICAL SURVEY, DENVER, COLORADO 80225, OR RESTON, VIRGINIA 22092
A FOLDER DESCRIBING TOPOGRAPHIC MAPS AND SYMBOLS IS AVAILABLE ON REQUEST



ROAD CLASSIFICATION
Light-duty ————— Unimproved dirt —————
State Route ○



CALF CREEK, UTAH
N3745—W1122.5/7.5
1964
PHOTOINSPECTED 1976
AMS 3759 IV SW—SERIES V897

