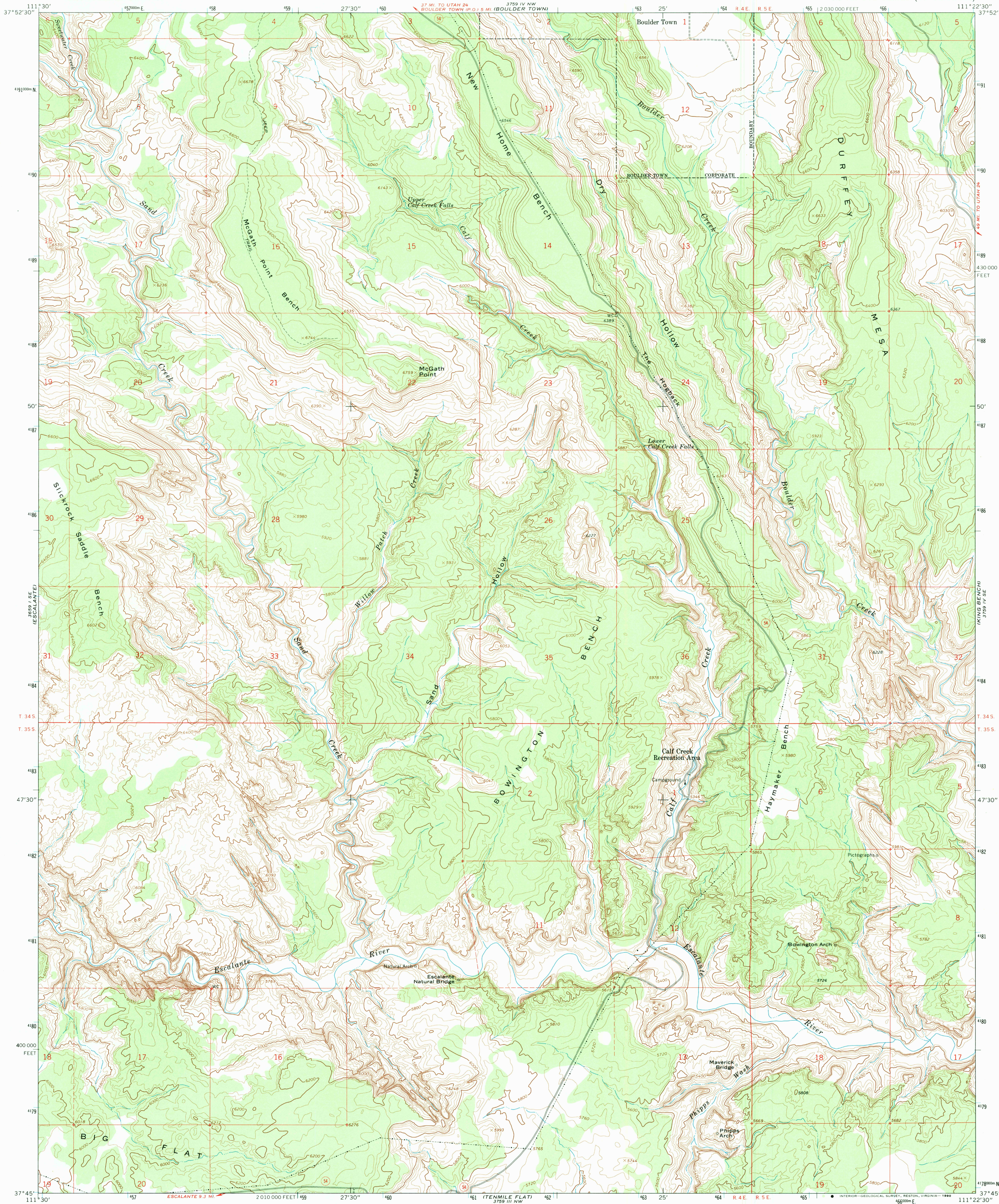


3699 1 NE  
(ROGER PEAK)

UNITED STATES  
DEPARTMENT OF THE INTERIOR  
GEOLOGICAL SURVEY

CALF CREEK QUADRANGLE  
UTAH—GARFIELD CO.  
7.5 MINUTE SERIES (TOPOGRAPHIC)

3759 IV NE  
STEEP CREEK BENCH



3699 1 NE  
(DAVE CANYON)

Mapped, edited, and published by the Geological Survey

Control by USGS and USC&GS

Topography by photogrammetric methods from aerial

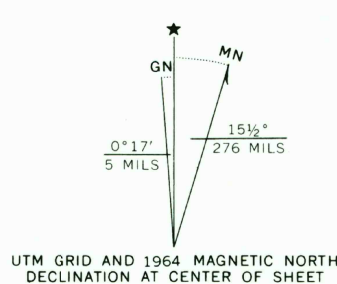
photographs taken 1958. Field checked 1964

Polyconic projection. 1927 North American datum  
10,000-foot grid based on Utah coordinate system, south zone  
1000-metre Universal Transverse Mercator grid ticks,  
zone 12, shown in blue

Where omitted, land lines have not been established

Map photoinspected 1976

No major culture or drainage changes observed

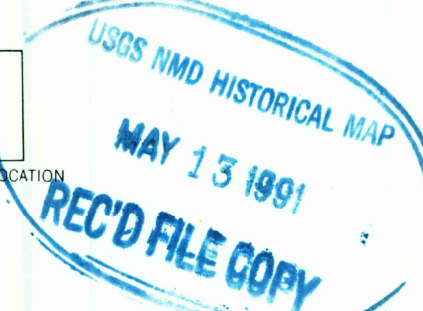


SCALE 1:24,000

0 1000 2000 3000 4000 5000 6000 7000 FEET  
0 1 2 3 4 5 KILOMETRE

CONTOUR INTERVAL 40 FEET  
DOTTED LINES REPRESENT 20-FOOT CONTOURS  
NATIONAL GEODETIC VERTICAL DATUM OF 1929

THIS MAP COMPLIES WITH NATIONAL MAP ACCURACY STANDARDS  
FOR SALE BY U. S. GEOLOGICAL SURVEY, DENVER, COLORADO 80225, OR RESTON, VIRGINIA 22092  
A FOLDER DESCRIBING TOPOGRAPHIC MAPS AND SYMBOLS IS AVAILABLE ON REQUEST



ROAD CLASSIFICATION  
Light-duty ————— Unimproved dirt =====  
○ State Route

CALF CREEK, UTAH  
N3745—W1122.5/7.5

1964  
PHOTOINSPECTED 1976  
AMS 3759 IV SW—SERIES V897

3759 IV NE  
(RED BREAKS)