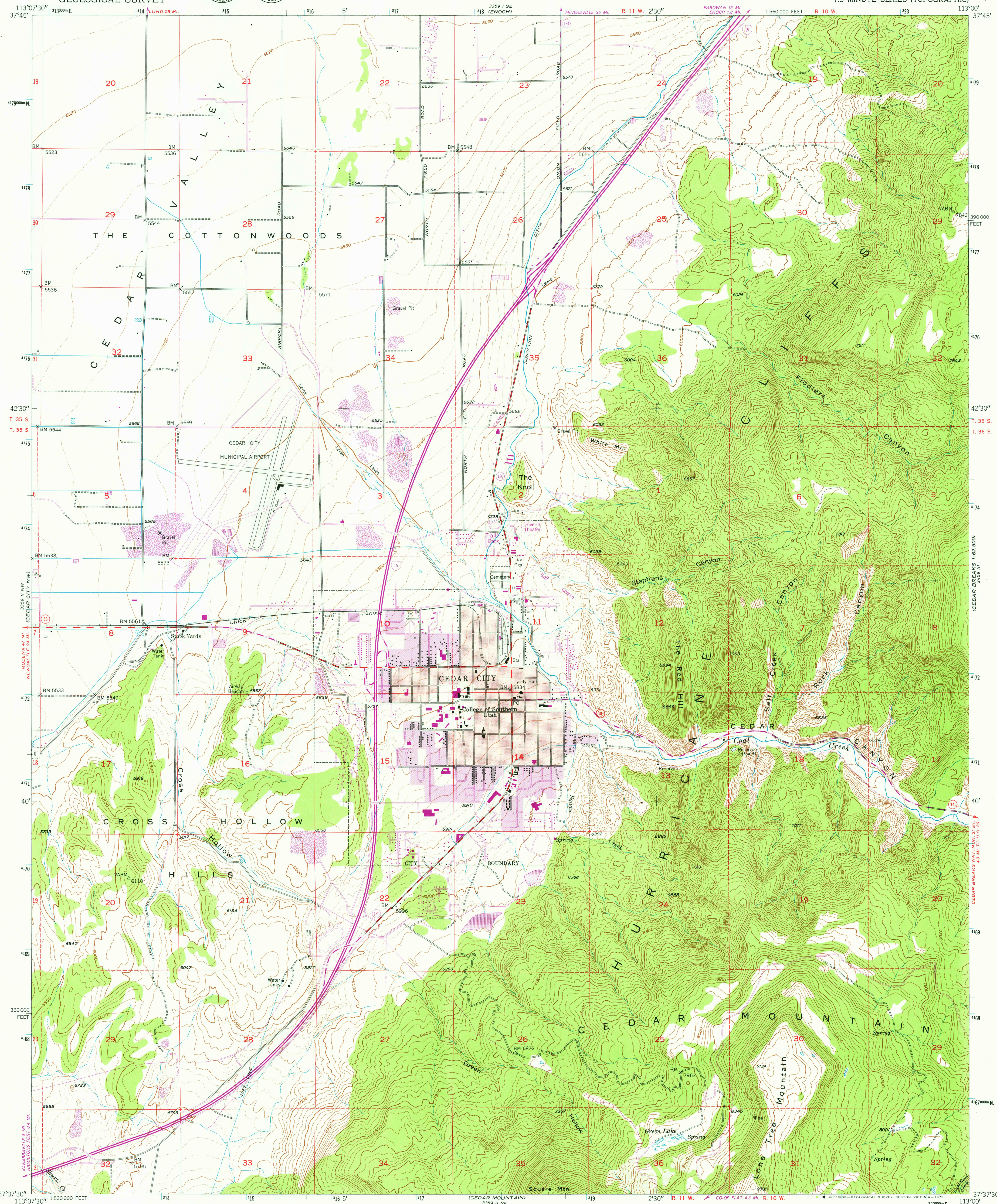


UNITED STATES
DEPARTMENT OF THE INTERIOR
GEOLOGICAL SURVEY



CEDAR CITY QUADRANGLE
UTAH-IRON CO.
7.5 MINUTE SERIES (TOPOGRAPHIC)

3359 I SW
3359 I SW
3359 I SW

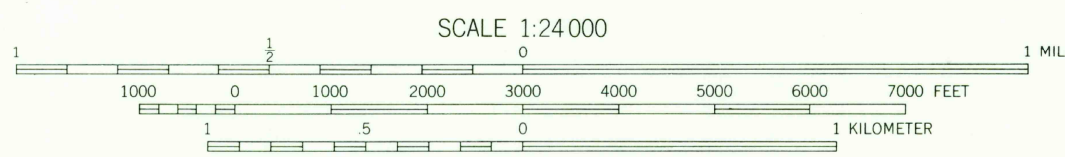
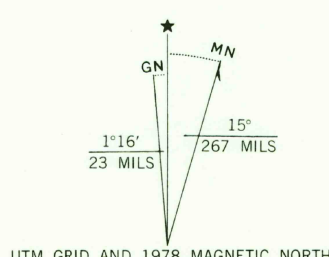


Mapped, edited, and published by the Geological Survey

Control by USGS, NOS/NOAA and State of Utah
Topography from aerial photographs by multiplex methods
and by plane-table surveys 1950
Aerial photographs taken 1948

Polyconic projection. 1927 North American datum
10,000-foot grid based on Utah coordinate system,
south zone
1000-meter Universal Transverse Mercator grid ticks,
zone 12, shown in blue

Red tint indicates area in which only
landmark buildings are shown
Dashed land lines indicate approximate location
Purple tint indicates extension of urban areas



CONTOUR INTERVAL 40 FEET
DOTTED LINES REPRESENT 10 FOOT CONTOURS
NATIONAL GEODETIC VERTICAL DATUM OF 1929
THIS MAP COMPLIES WITH NATIONAL MAP ACCURACY STANDARDS
FOR SALE BY U.S. GEOLOGICAL SURVEY, DENVER, COLORADO 80225, OR RESTON, VIRGINIA 22092
A FOLDER DESCRIBING TOPOGRAPHIC MAPS AND SYMBOLS IS AVAILABLE ON REQUEST

ROAD CLASSIFICATION
Heavy-duty 4 LANE 6 LANE Light-duty
Medium-duty 4 LANE 6 LANE Unimproved dirt
U.S. Route State Route Interstate Route

USGS
Historical File
Topographic Division

CEDAR CITY, UTAH
N3737.5-W11300/7.5
1950

PHOTOREVISED 1978
DMA 3359 II NE-SERIES V987

Revisions shown in purple compiled from aerial photographs
taken 1976 and other source data. This information not
field checked. Map edited 1978

JUN 26 1979

1000