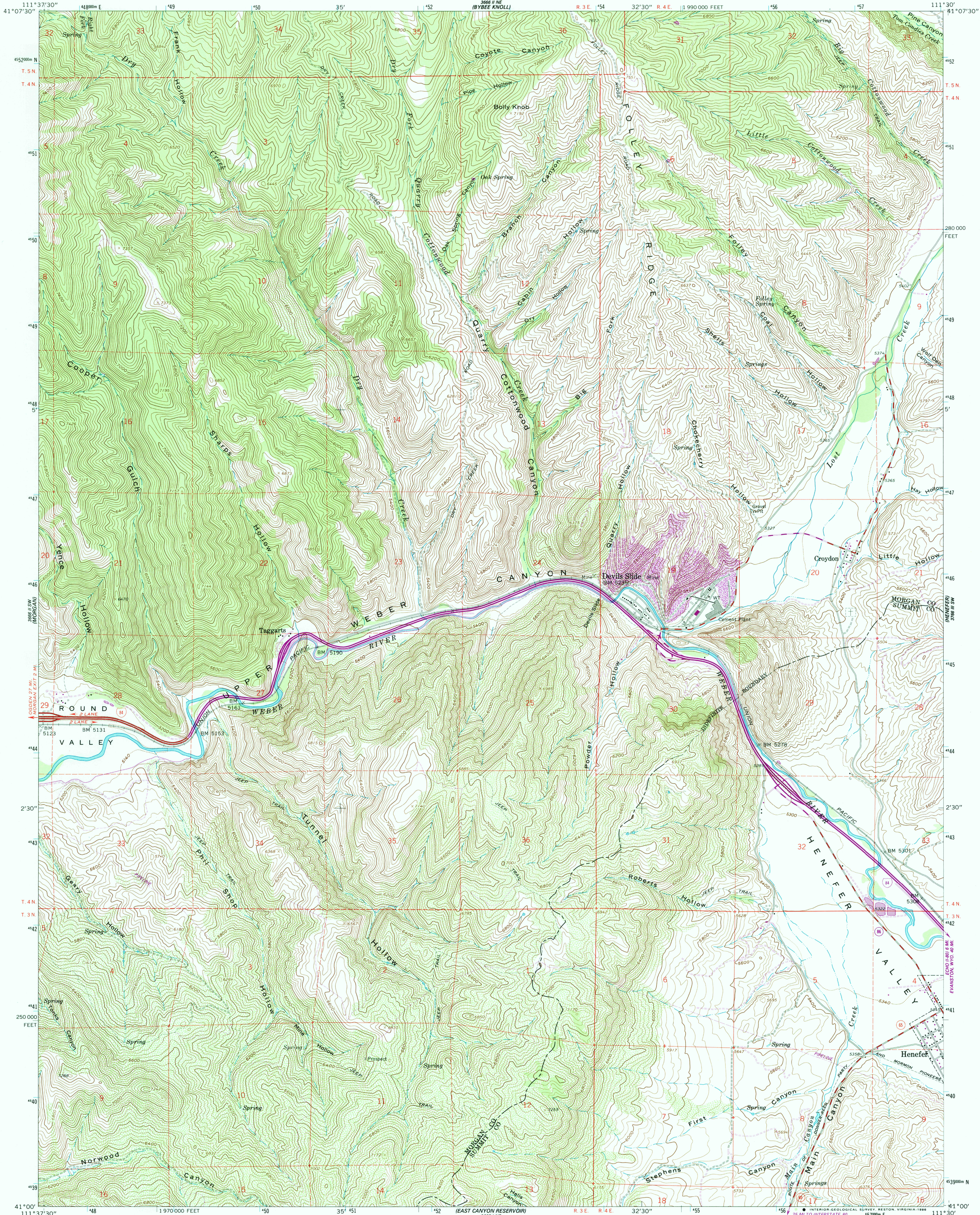
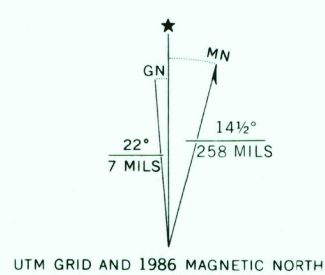


UNITED STATES  
DEPARTMENT OF THE INTERIOR  
GEOLOGICAL SURVEY

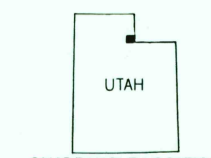
DEVILS SLIDE QUADRANGLE  
UTAH  
7.5 MINUTE SERIES (TOPOGRAPHIC)  
SE/4 MORGAN 15' QUADRANGLE



Mapped, edited, and published by the Geological Survey  
Control by USGS and NOS/NOAA  
Topography by photogrammetric methods from aerial  
photographs taken 1956. Field checked 1961  
Polyconic projection. 1927 North American Datum  
10,000-foot grid based on Utah coordinate system, north zone  
1000-meter Universal Transverse Mercator grid ticks,  
zone 12, shown in blue  
To place on the predicted North American Datum 1983  
move the projection lines 10 meters north and  
64 meters east as shown by dashed corner ticks  
Revisions shown in purple compiled from aerial photographs  
taken 1981 and other source data. This information not  
field checked. Map edited 1986



SCALE 1:24 000  
1 000 0 1000 2000 3000 4000 5000 6000 7000 FEET  
1 0 1 2 3 4 5 6 7 8 9 10 KILOMETER  
CONTOUR INTERVAL 40 FEET  
DOTTED LINES REPRESENT 20-FOOT CONTOURS  
NATIONAL GEODETIC VERTICAL DATUM OF 1929  
THIS MAP COMPLIES WITH NATIONAL MAP ACCURACY STANDARDS  
FOR SALE BY U.S. GEOLOGICAL SURVEY, DENVER, COLORADO 80225, OR RESTON, VIRGINIA 22092  
A FOLDER DESCRIBING TOPOGRAPHIC MAPS AND SYMBOLS IS AVAILABLE ON REQUEST



ROAD CLASSIFICATION  
Heavy-duty ——— Light-duty ———  
Medium-duty ——— Unimproved dirt ———  
Interstate Route U.S. Route State Route  
DEVILS SLIDE, UTAH  
SE/4 MORGAN 15' QUADRANGLE  
41111-A5-TF-024  
1961  
PHOTOREVISED 1986  
DMA 3666 II SE-SERIES V897

