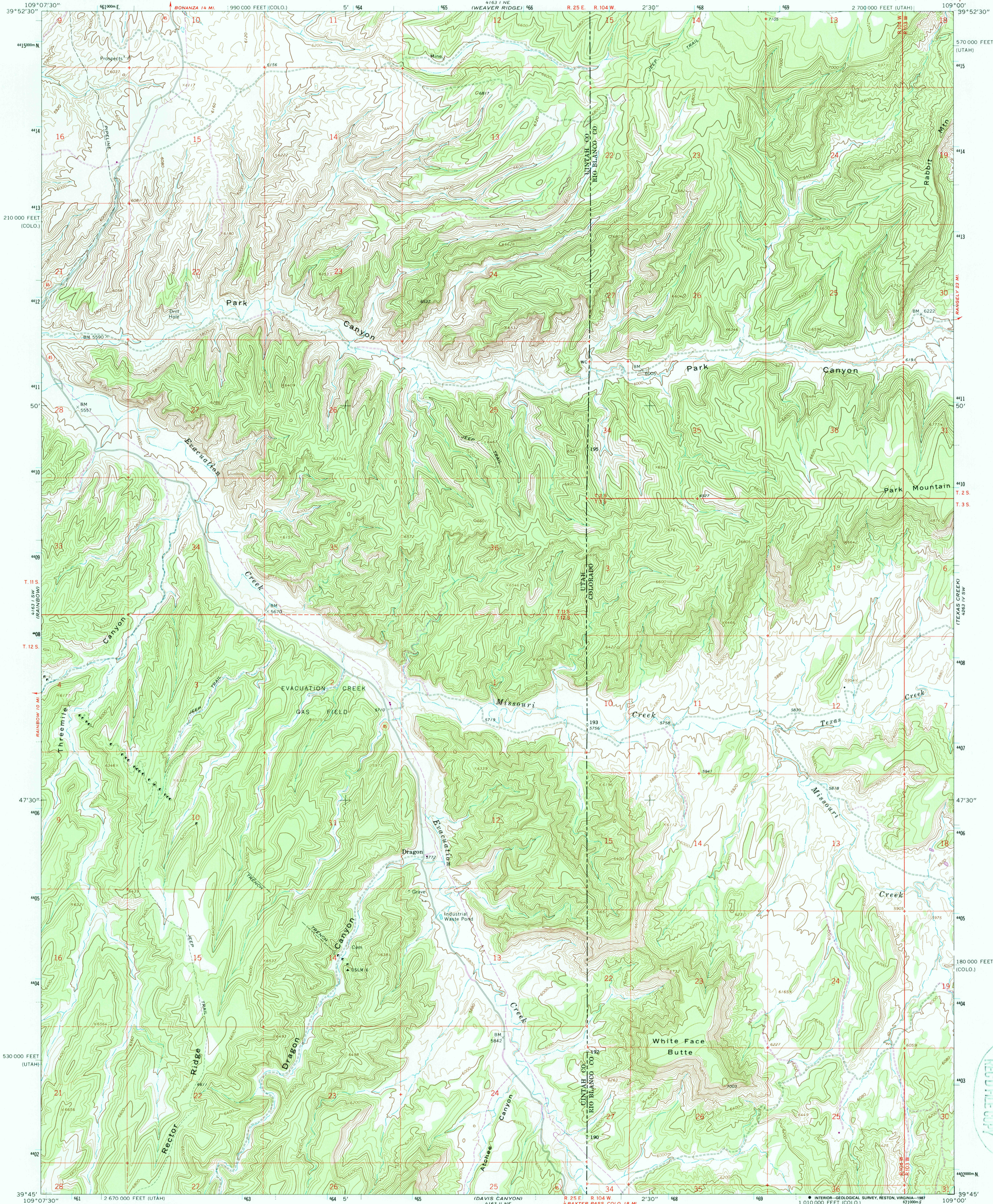


UNITED STATES
DEPARTMENT OF THE INTERIOR
GEOLOGICAL SURVEY

DRAGON QUADRANGLE
UTAH-COLORADO
7.5 MINUTE SERIES (TOPOGRAPHIC)



Mapped, edited, and published by the Geological Survey

Control by USGS and USC&GS

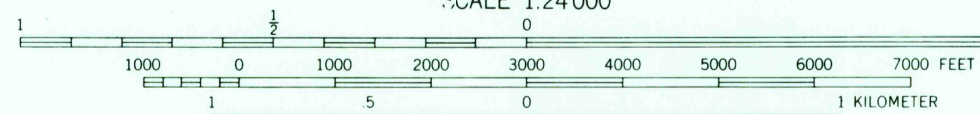
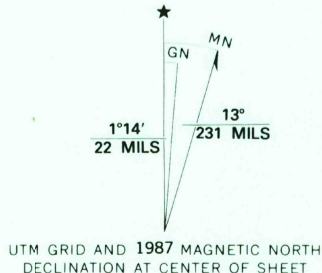
Topography by photogrammetric methods from aerial photographs taken 1965. Field checked 1968

Polyconic projection. 1927 North American datum 10,000-foot grids based on Utah coordinate system, central zone, and Colorado coordinate system, north zone 1000-meter Universal Transverse Mercator grid ticks, zone 12, shown in blue

Fine red dashed lines indicate selected fence lines

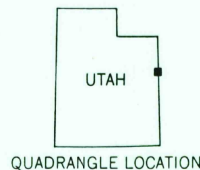
To place on the predicted North American Datum 1983, move the projection lines 7 meters north and 58 meters east as shown by dashed corner ticks

Revisions shown in purple compiled from aerial photographs taken 1983 and other sources. This information not field checked. Map edited 1987



CONTOUR INTERVAL 40 FEET
NATIONAL GEODETIC VERTICAL DATUM OF 1929

THIS MAP COMPLIES WITH NATIONAL MAP ACCURACY STANDARDS
FOR SALE BY U. S. GEOLOGICAL SURVEY, DENVER, COLORADO 80225, OR RESTON, VIRGINIA 22092
A FOLDER DESCRIBING TOPOGRAPHIC MAPS AND SYMBOLS IS AVAILABLE ON REQUEST



ROAD CLASSIFICATION
Light-duty road, all weather, Unimproved road, fair or dry weather
improved surface weather
Slate Route

DRAGON, UTAH-COLO.
39109-G1-TF-024

1968
PHOTOREVISED 1987
DMA 4163 1 SE-SERIES V897

U.S. AND HISTORICAL MAP
JAN 22 1988
REF ID: A67107