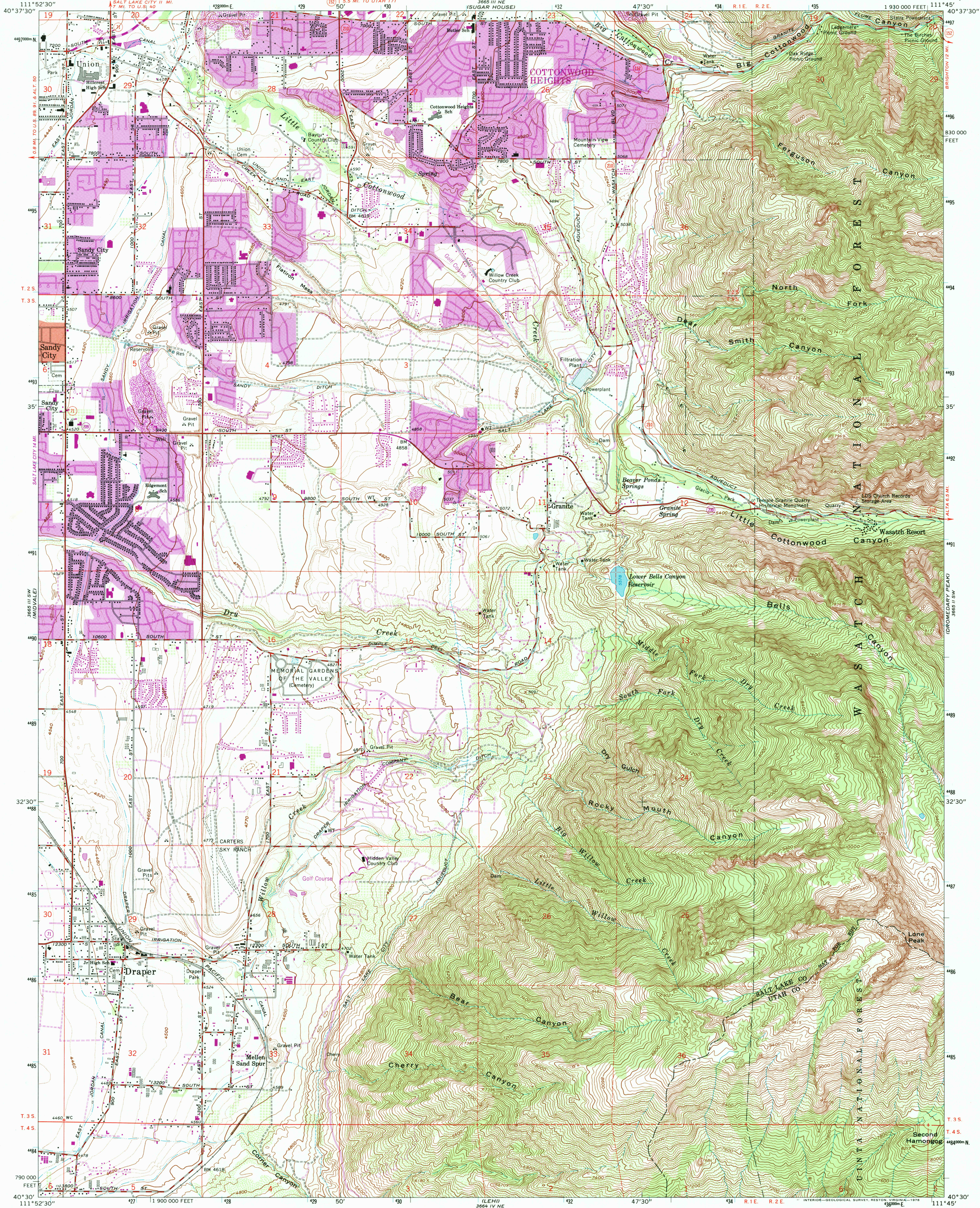


UNITED STATES
DEPARTMENT OF THE INTERIOR
GEOLOGICAL SURVEY

DRAPER QUADRANGLE
UTAH
7.5 MINUTE SERIES (TOPOGRAPHIC)



Mapped, edited, and published by the Geological Survey

Control by USGS and NOS/NOAA

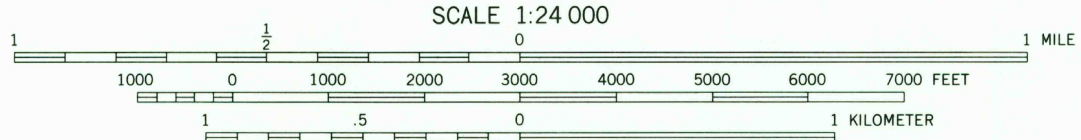
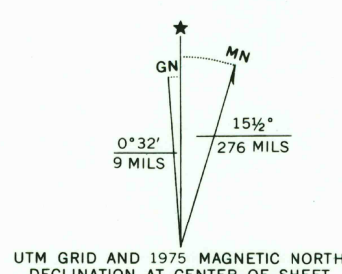
Topography by photogrammetric methods from aerial photographs taken 1950 and planetable surveys 1925 and 1927. Revised from aerial photographs taken 1962. Field checked 1963

Polyconic projection. 1927 North American datum
10,000-foot grid based on Utah coordinate system, central zone
1000-meter Universal Transverse Mercator grid ticks, zone 12, shown in blue

Red tint indicates area in which only landmark buildings are shown
Where omitted, land lines have not been established

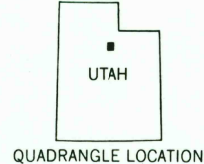
Revisions shown in purple compiled from aerial photographs taken 1969 and 1975. This information not field checked

Purple tint indicates extension of urban areas

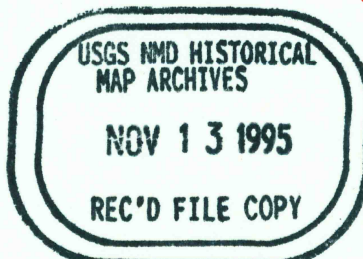


SCALE 1:24 000
CONTOUR INTERVAL 40 FEET
DOTTED LINES REPRESENT 10-FOOT CONTOURS
NATIONAL GEODETIC VERTICAL DATUM OF 1929

THIS MAP COMPLIES WITH NATIONAL MAP ACCURACY STANDARDS
FOR SALE BY U. S. GEOLOGICAL SURVEY, DENVER, COLORADO 80225, OR RESTON, VIRGINIA 22092
A FOLDER DESCRIBING TOPOGRAPHIC MAPS AND SYMBOLS IS AVAILABLE ON REQUEST



ROAD CLASSIFICATION
Heavy-duty ——— Light-duty ———
Medium-duty ——— Unimproved dirt ———
State Route ○



DRAPER, UTAH
N4030—W11145/7.5

1963
PHOTOREVISED 1969 AND 1975
AMS 3665 III SE—SERIES Y897

