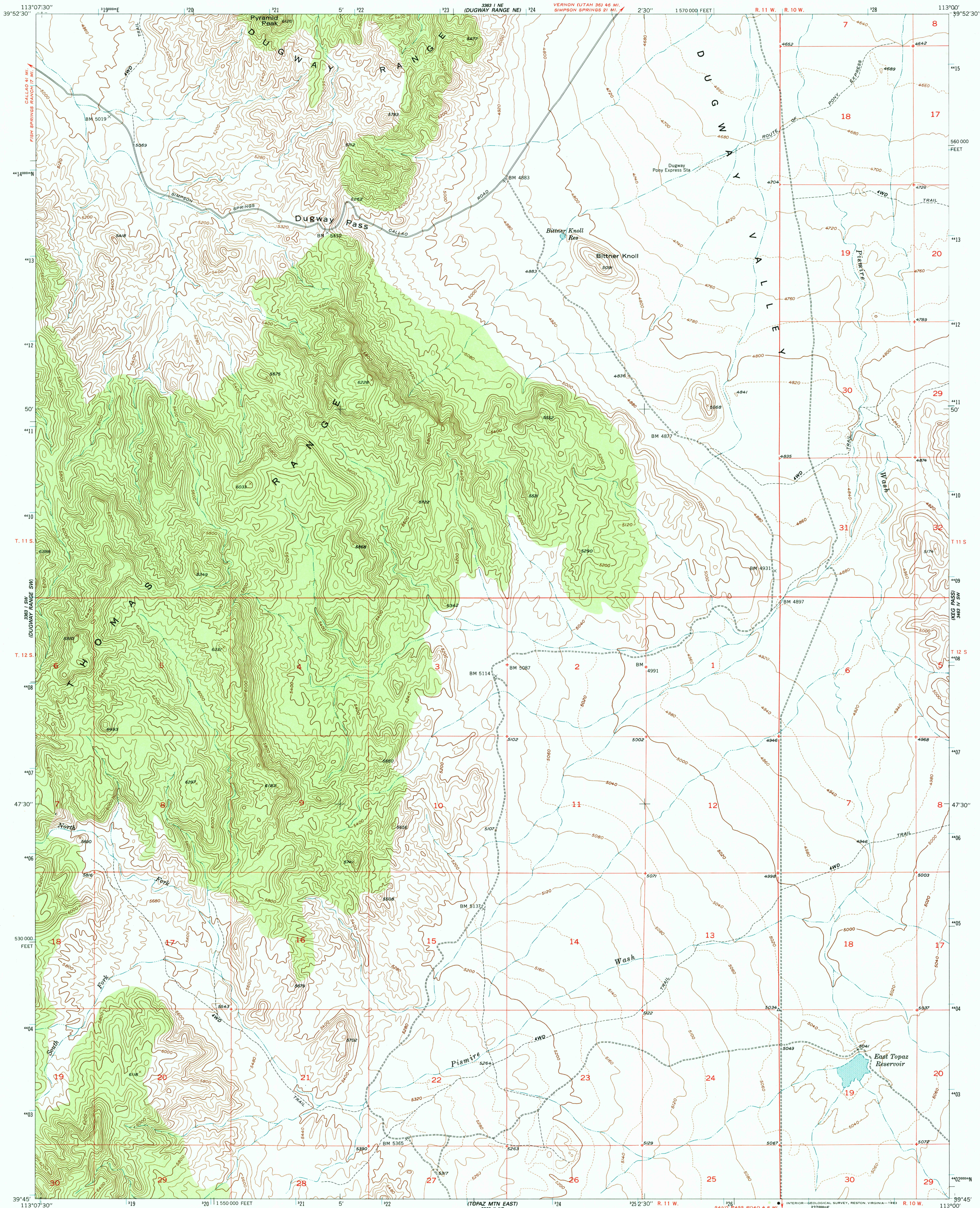
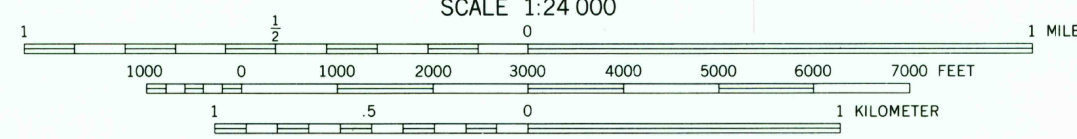
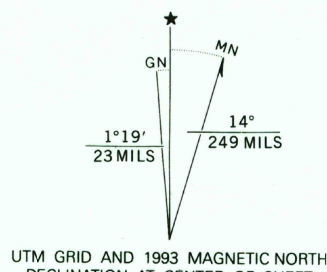


UNITED STATES
DEPARTMENT OF THE INTERIOR
GEOLOGICAL SURVEY

DUGWAY PASS QUADRANGLE
UTAH-JUAB CO
7.5 MINUTE SERIES (TOPOGRAPHIC)

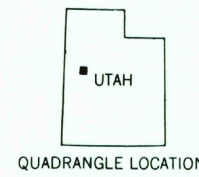


Produced by the United States Geological Survey
Control by USGS and NOS/NOAA
Compiled by photogrammetric methods from aerial
photographs taken 1951, and by plane-table surveys 1953
North American Datum of 1927 (NAD 27). Projection and
10 000-foot grid ticks: Utah Coordinate System, central zone
(Lambert Conformal Conic). 1000-meter Universal Transverse
Mercator grid ticks, zone 12, shown in blue
The difference between NAD 27 and North American Datum of
1983 (NAD 83) for 7.5 minute intersections is given in USGS
Bulletin 1875. The NAD 83 is shown by dashed corner ticks
Where omitted, land lines have not been established
Photinspected from 1991 source; no major culture
or drainage changes observed. Names revised 1992



THIS MAP COMPLIES WITH NATIONAL MAP ACCURACY STANDARDS
FOR SALE BY U. S. GEOLOGICAL SURVEY, DENVER, COLORADO 80225 OR RESTON, VIRGINIA 22092
A FOLDER DESCRIBING TOPOGRAPHIC MAPS AND SYMBOLS IS AVAILABLE ON REQUEST

ROAD CLASSIFICATION
Heavy-duty ——— 4 LANE 6 LANE Light-duty ———
Medium-duty ——— 4 LANE 6 LANE Unimproved dirt ———
U. S. Route ——— State Route ———



DUGWAY PASS, UTAH
39113-G1-TF-024

1953
MINOR REVISION 1992
DMA 3363 1 SE-SERIES V897