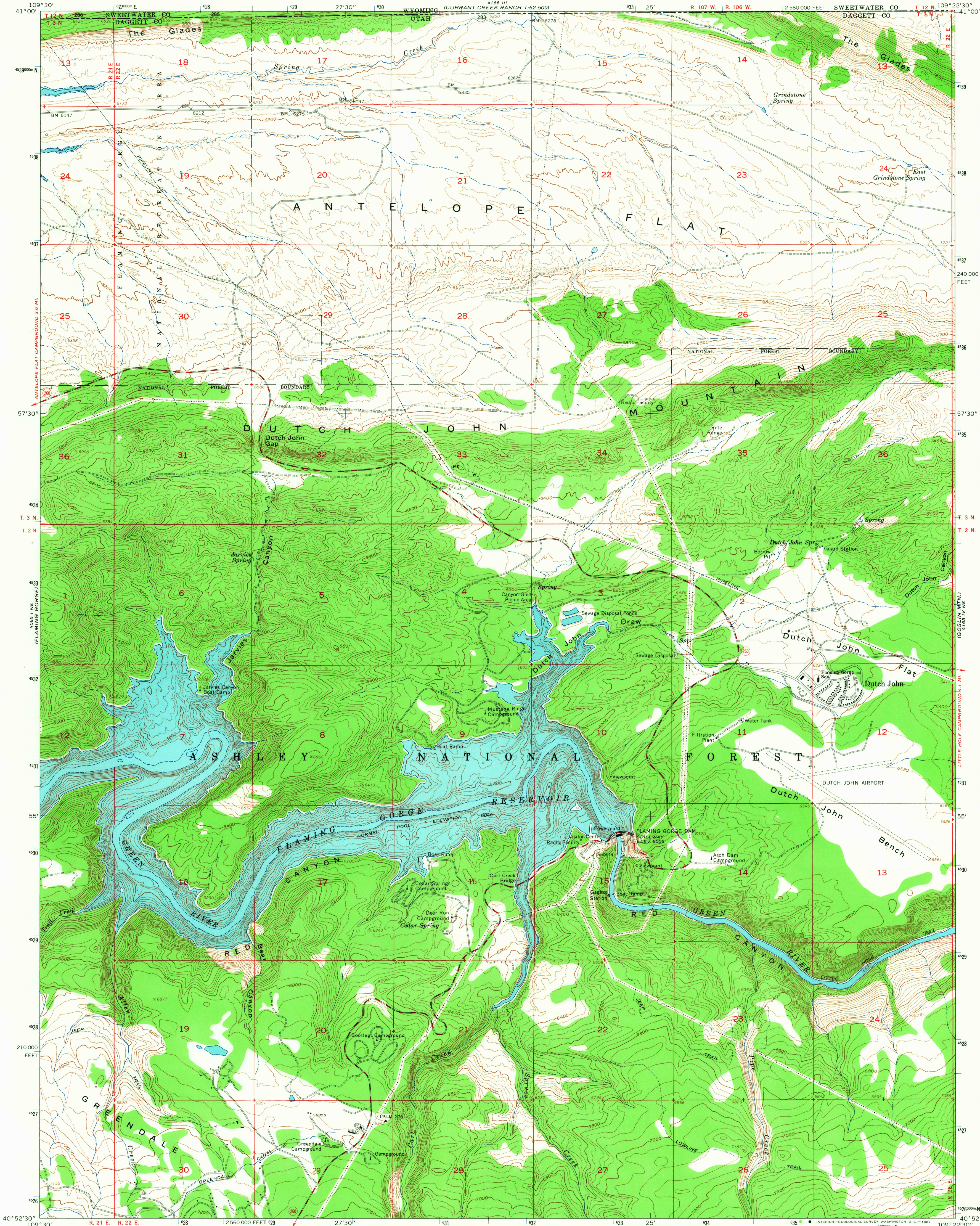
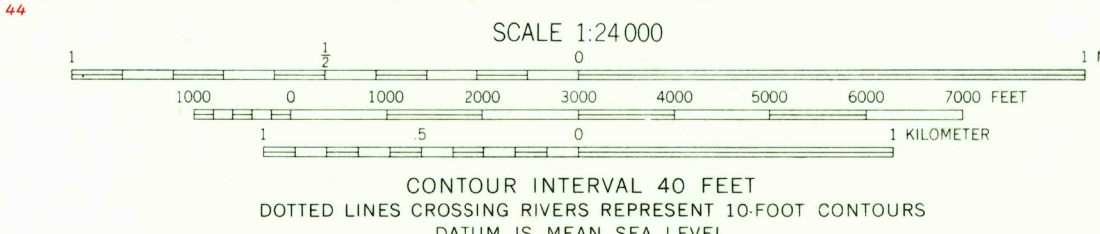
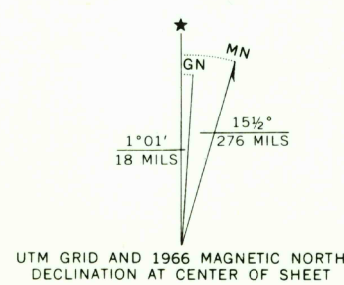


UNITED STATES  
DEPARTMENT OF THE INTERIOR  
GEOLOGICAL SURVEY

DUTCH JOHN QUADRANGLE  
UTAH-WYOMING  
7.5 MINUTE SERIES (TOPOGRAPHIC)



Maped, edited, and published by the Geological Survey  
Control by USGS, USC&GS, and U.S. Bureau of Reclamation  
Topography by photogrammetric methods from aerial photographs  
taken 1950. Field checked 1952. Revised from aerial  
photographs taken 1966. Field checked 1966  
Polyconic projection. 1927 North American datum  
10,000-foot grid based on Utah coordinate system, north zone  
1000-meter Universal Transverse Mercator grid ticks,  
zone 12, shown in blue  
Fine red dashed lines indicate selected fence lines  
Where omitted, land lines have not been established  
Areas covered by dashed light-blue pattern are subject  
to controlled inundation to 6045 feet



USGS  
HISTORICAL FILE  
TOPOGRAPHIC DIVISION



ROAD CLASSIFICATION  
Medium-duty ——— Light-duty ———  
Unimproved dirt ———  
State Route

DUTCH JOHN, UTAH-WYO.  
N4052.5-W10922.5/7.5  
1966  
AMS 4165 IV NW-SERIES V897

THIS MAP COMPLIES WITH NATIONAL MAP ACCURACY STANDARDS  
FOR SALE BY U.S. GEOLOGICAL SURVEY, DENVER, COLORADO 80225, OR WASHINGTON, D. C. 20242  
A FOLDER DESCRIBING TOPOGRAPHIC MAPS AND SYMBOLS IS AVAILABLE ON REQUEST