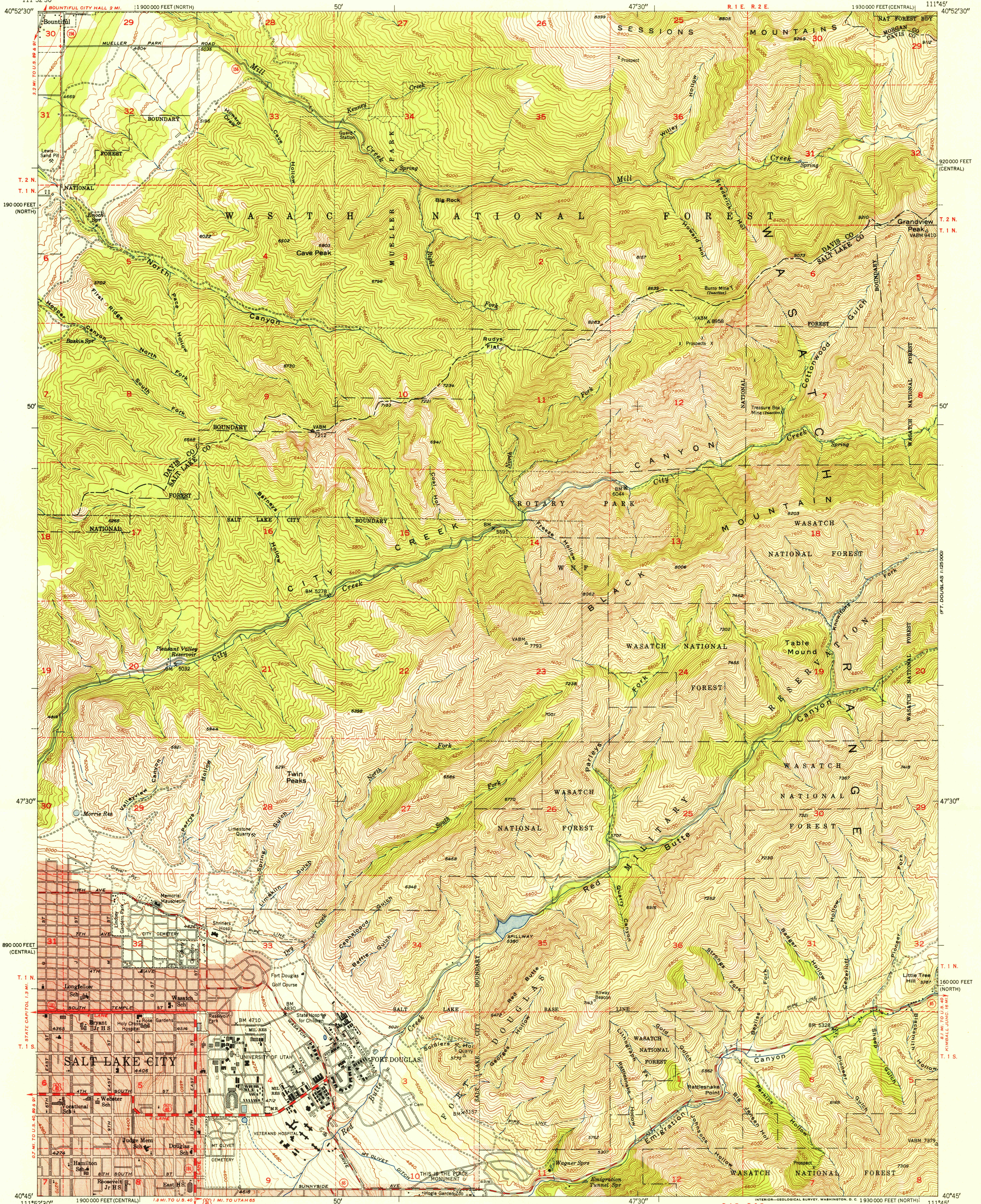


U.S.G.S.
FILE COPY
Inspection and Editing.

UNITED STATES
DEPARTMENT OF THE INTERIOR
GEOLOGICAL SURVEY

STATE OF UTAH
J. BRACKEN LEE, GOVERNOR
JOSEPH M. TRACY, STATE ENGINEER

FORT DOUGLAS QUADRANGLE
UTAH
7.5 MINUTE SERIES (TOPOGRAPHIC)



Mapped, edited, and published by the Geological Survey
Control by USGS and USC&GS
Topography from aerial photographs by multiplex methods
and by plane-table surveys 1925, 1934 and 1950
Aerial photographs taken 1950
Polyconic projection. 1927 North American Datum
10,000-foot grid based on Utah coordinate systems,
central and north zones
Red tint indicates area in which only
landmark buildings are shown
Dashed land lines indicate approximate location

TRUE NORTH
MAGNETIC NORTH
APPROXIMATE MEAN
DECLINATION, 1950

SCALE 1:24,000
1000 0 1000 2000 3000 4000 5000 6000 7000 FEET
1 5 0 1 KILOMETER
CONTOUR INTERVAL 40 FEET
DOTTED LINES REPRESENT 10 FOOT CONTOURS
DATUM IS MEAN SEA LEVEL

USGS
HISTORICAL FILE
TOPOGRAPHIC DIVISION

U.S.G.S.
FILE COPY
Inspection and Editing.

ROAD CLASSIFICATION
Heavy-duty... —— —— Light-duty... ----
Medium-duty... —— —— Unimproved dirt... -----
U.S. Route □ State Route ○

FORT DOUGLAS, UTAH
N4045-W1145/7.5
EDITION OF 1951

THIS MAP COMPLIES WITH NATIONAL MAP ACCURACY STANDARDS
FOR SALE BY U. S. GEOLOGICAL SURVEY, FEDERAL CENTER, DENVER, COLORADO OR WASHINGTON 25, D. C.
A FOLDER DESCRIBING TOPOGRAPHIC MAPS AND SYMBOLS IS AVAILABLE ON REQUEST