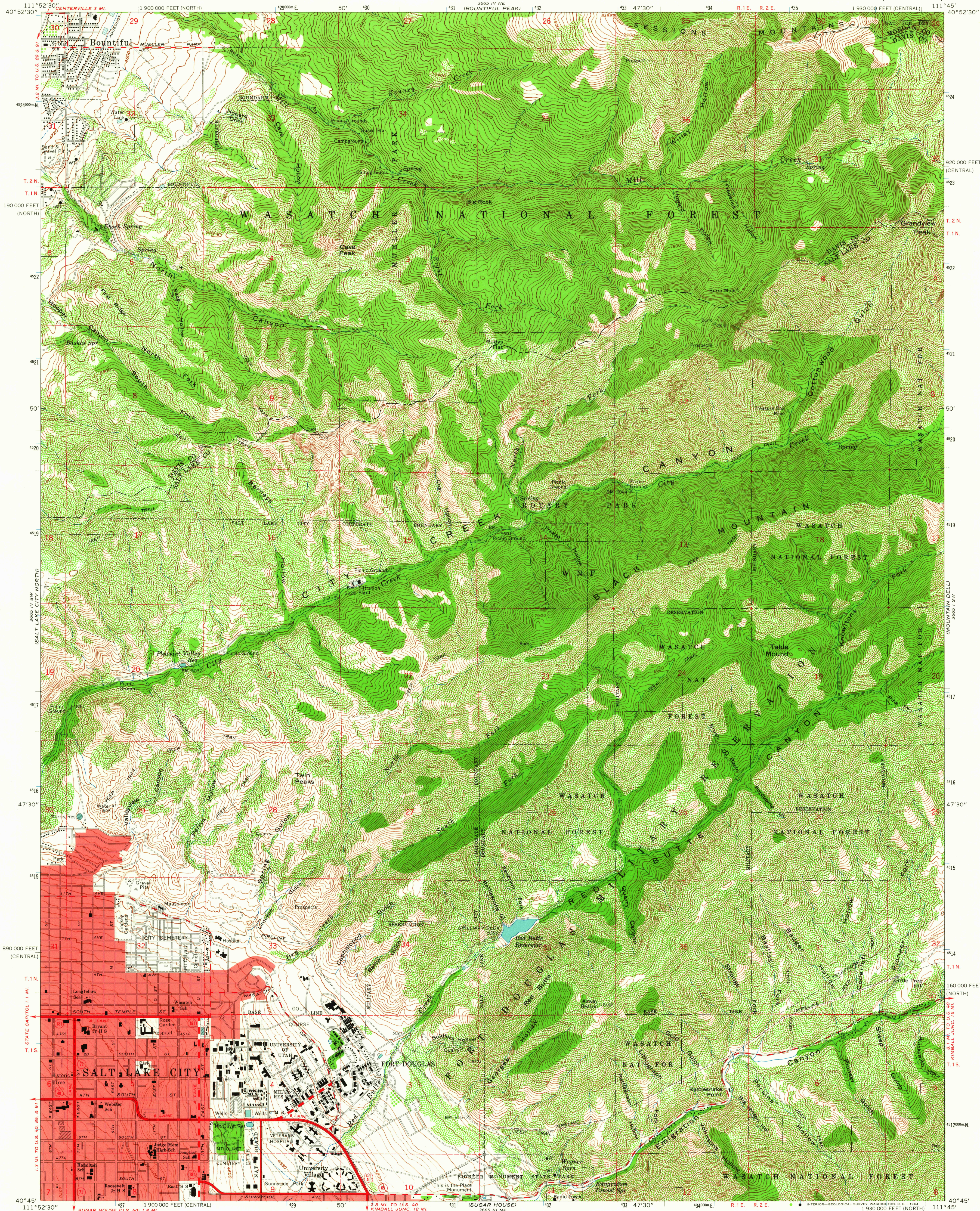


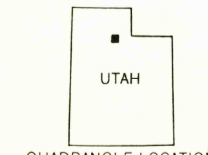
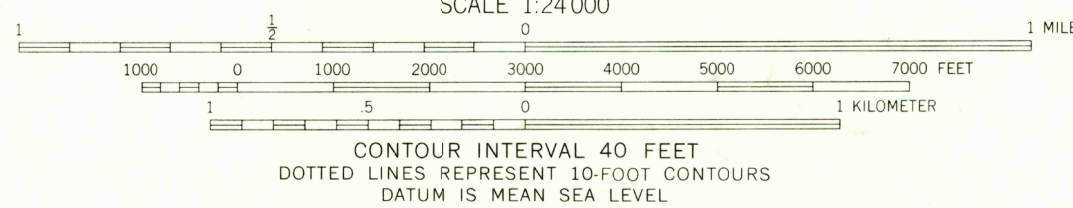
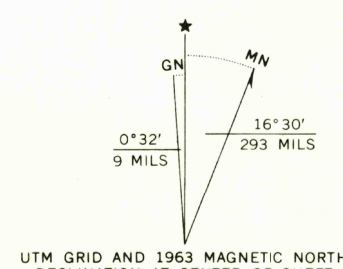
UNITED STATES  
DEPARTMENT OF THE INTERIOR  
GEOLOGICAL SURVEY

FORT DOUGLAS QUADRANGLE  
UTAH  
7.5 MINUTE SERIES (TOPOGRAPHIC)



Mapped, edited, and published by the Geological Survey  
Control by USGS and USC&GS

Topography by photogrammetric methods from aerial photographs  
taken 1950 and planetable surveys 1925, 1934, and 1950  
Revised from aerial photographs taken 1962. Field checked 1963  
Polyconic projection. 1927 North American datum  
10,000-foot grids based on Utah coordinate system,  
central and north zones  
1000-meter Universal Transverse Mercator grid ticks,  
zone 12, shown in blue  
Red tint indicates areas in which only landmark buildings are shown  
Certain land lines are omitted because of insufficient data  
Fine red dashed lines indicate selected fence lines



ROAD CLASSIFICATION	
Heavy-duty	Light-duty
Medium-duty	Unimproved dirt
U.S. Route	State Route

FORT DOUGLAS, UTAH  
N4045—W11145/7.5

1963

AMS 3665 IV SE—SERIES V897

NOV 23 1964

3655