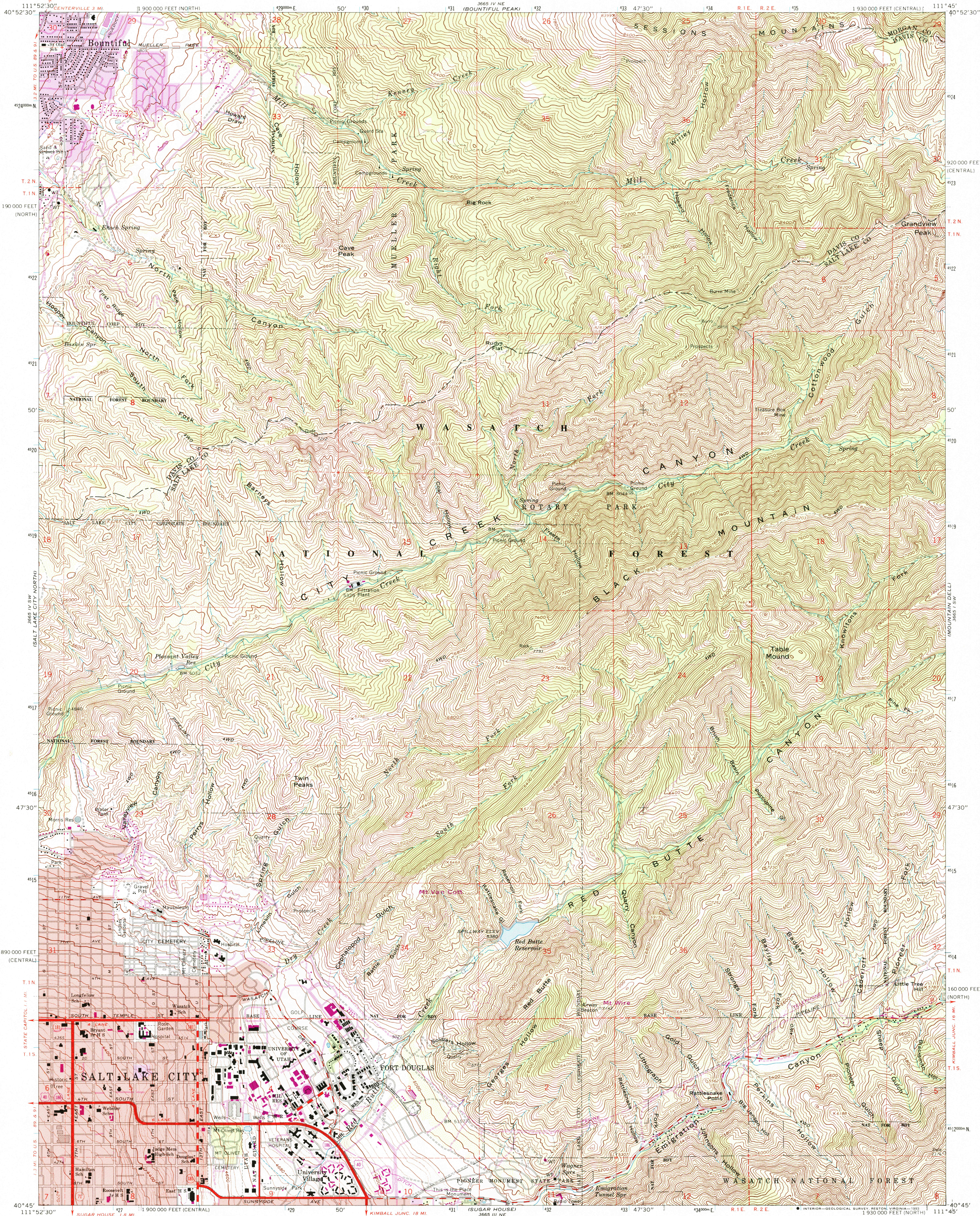
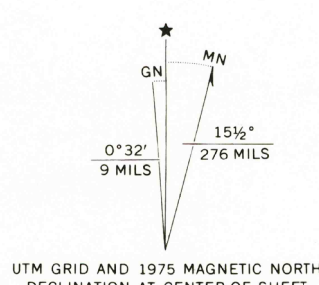


UNITED STATES  
DEPARTMENT OF THE INTERIOR  
GEOLOGICAL SURVEY

FORT DOUGLAS QUADRANGLE  
UTAH  
7.5 MINUTE SERIES (TOPOGRAPHIC)



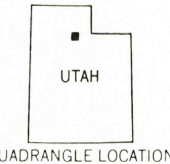
Produced by the United States Geological Survey  
Control by USGS and NOS/NOAA  
Compiled from aerial photographs taken 1950 and by  
plane-table surveys 1925, 1934, and 1950  
Revised from aerial photographs taken 1962. Field checked 1963  
North American Datum of 1927 (NAD 27). Projection:  
Utah Coordinate System, central zone (Lambert Conformal Conic)  
10 000-foot grid ticks: Utah Coordinate System, central and  
north zones. 1000-meter Universal Transverse Mercator grid ticks,  
zone 12, shown in blue  
The difference between NAD 27 and North American Datum of  
1983 (NAD 83) for 7.5 minute intersections is given in USGS  
Bulletin 1875. The NAD 83 is shown by dashed corner ticks  
There may be private inholdings within the boundaries of the National  
or State reservations shown on this map  
Red tint indicates areas in which only landmark buildings are shown  
Fine red dashed lines indicate selected fence lines  
Certain land lines are omitted because of insufficient data



THIS MAP COMPLIES WITH NATIONAL MAP ACCURACY STANDARDS  
FOR SALE BY U.S. GEOLOGICAL SURVEY, DENVER, COLORADO 80225, OR RESTON, VIRGINIA 22092  
A FOLDER DESCRIBING TOPOGRAPHIC MAPS AND SYMBOLS IS AVAILABLE ON REQUEST

Revisions shown in purple compiled from aerial photographs  
taken 1969 and 1975. This information not field checked  
Purple tint indicates extension of urban area

ROAD CLASSIFICATION  
Heavy-duty ——— Light-duty ———  
Medium-duty ——— Unimproved dirt ———  
U.S. Route ——— State Route ———



FORT DOUGLAS, UTAH  
40111-G7-TF-024

1963  
PHOTOREVISED 1969 AND 1975  
DMA 3665 IV SE-SERIES V897

