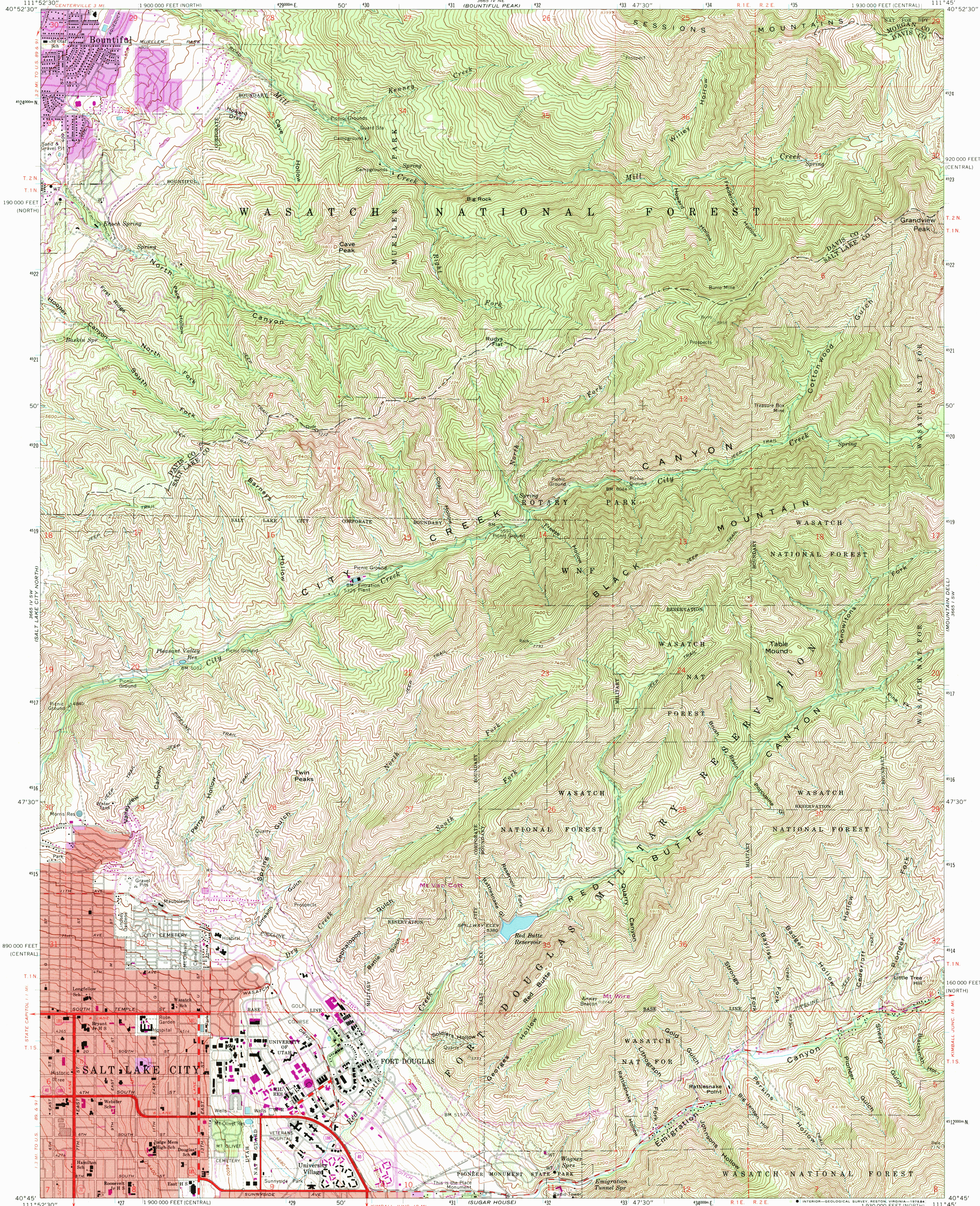


UNITED STATES
DEPARTMENT OF THE INTERIOR
GEOLOGICAL SURVEY

FORT DOUGLAS QUADRANGLE
UTAH
7.5 MINUTE SERIES (TOPOGRAPHIC)



Mapped, edited, and published by the Geological Survey
Control by USGS and NOS/NOAA

Topography by photogrammetric methods from aerial photographs
taken 1950 and planetable surveys 1925, 1934, and 1950
Revised from aerial photographs taken 1962. Field checked 1963

Polyconic projection. 1927 North American datum
10,000-foot grids based on Utah coordinate system,
central and north zones
1000-meter Universal Transverse Mercator grid ticks,
zone 12, shown in blue

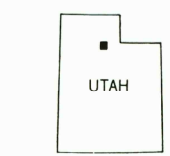
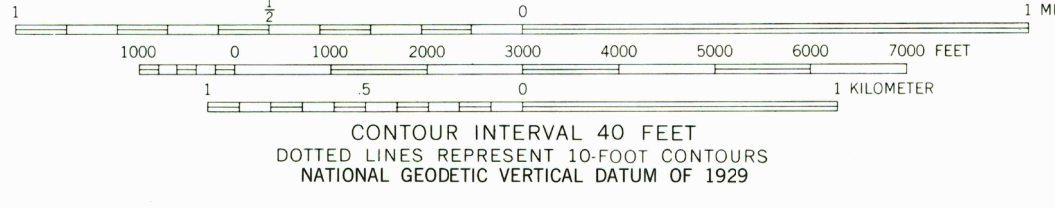
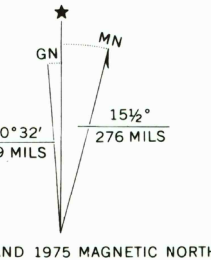
Red tint indicates areas in which only landmark buildings are shown

Certain land lines are omitted because of insufficient data

Fine red dashed lines indicate selected fence lines

Revisions shown in purple compiled from aerial photographs
taken 1969 and 1975. This information not field checked

Purple tint indicates extension of urban areas



ROAD CLASSIFICATION	
Heavy-duty	Light-duty
Medium-duty	Unimproved dirt
U. S. Route	State Route

THIS MAP COMPLIES WITH NATIONAL MAP ACCURACY STANDARDS
FOR SALE BY U. S. GEOLOGICAL SURVEY, DENVER, COLORADO 80225, OR RESTON, VIRGINIA 22092
A FOLDER DESCRIBING TOPOGRAPHIC MAPS AND SYMBOLS IS AVAILABLE ON REQUEST

FORT DOUGLAS, UTAH
N4045—W1145/7.5

1963
PHOTOREVISED 1969 AND 1975
AMS 3665 IV SE—SERIES V897

RETURN TO:
USGS AND HISTORICAL MAP ARCHIVES

7/5/84