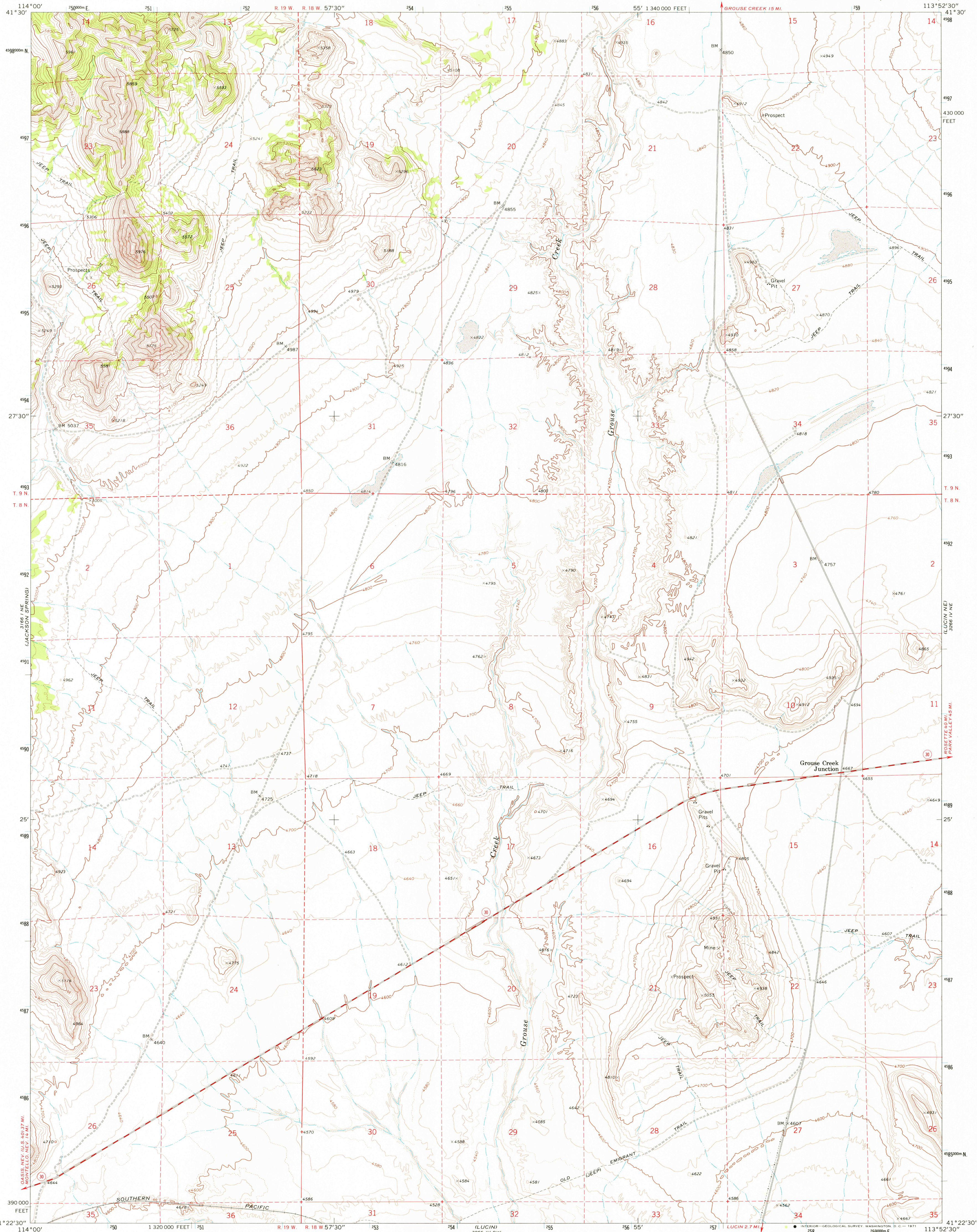


OWRI VALLEY
1922-500

UNITED STATES
DEPARTMENT OF THE INTERIOR
GEOLOGICAL SURVEY



LUCIN NW QUADRANGLE
UTAH—BOX ELDER CO.
7.5 MINUTE SERIES (TOPOGRAPHIC)



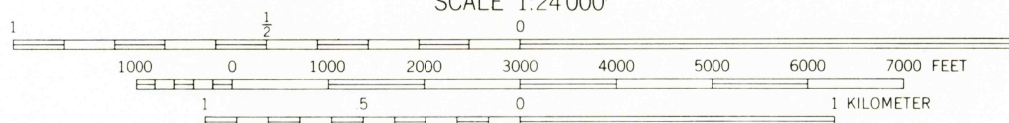
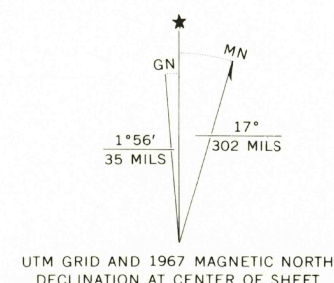
Mapped, edited, and published by the Geological Survey

Control by USGS and USC&GS

Topography by photogrammetric methods from aerial photographs taken 1966. Field checked 1967

Polycyclic projection. 1927 North American datum 10,000-foot grid based on Utah coordinate system, north zone 1000-meter Universal Transverse Mercator grid ticks, zone 12, shown in blue

Fine red dashed lines indicate selected fence lines



CONTOUR INTERVAL 20 FEET
DOTTED LINES REPRESENT 10-FOOT CONTOURS
DATUM IS MEAN SEA LEVEL

THIS MAP COMPLIES WITH NATIONAL MAP ACCURACY STANDARDS

FOR SALE BY U. S. GEOLOGICAL SURVEY, DENVER, COLORADO 80225, OR WASHINGTON, D. C. 20242
A FOLDER DESCRIBING TOPOGRAPHIC MAPS AND SYMBOLS IS AVAILABLE ON REQUEST



USGS
Historical File
Topographic Division

LUCIN NW, UTAH
N4122.5—W11352.5/7.5
1967

AMS 3266 IV NW—SERIES V897

MAR 19 1978

3650