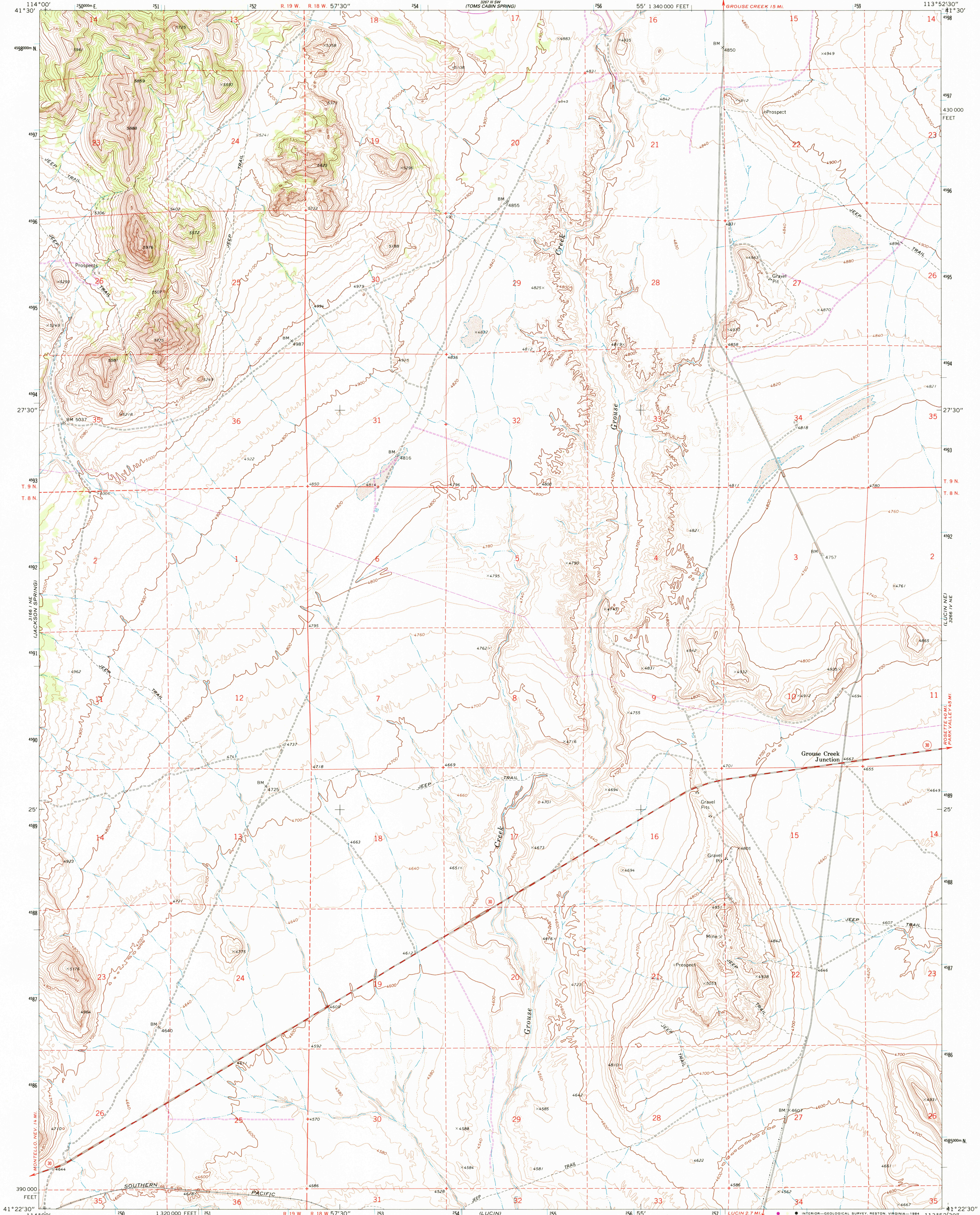


UNITED STATES
DEPARTMENT OF THE INTERIOR
GEOLOGICAL SURVEY

LUCIN NW QUADRANGLE
UTAH—BOX ELDER CO.
7.5 MINUTE SERIES (TOPOGRAPHIC)



Mapped, edited, and published by the Geological Survey

Control by USGS and NOS/NOAA

Topography by photogrammetric methods from aerial photographs taken 1966. Field checked 1967

Polyconic projection. 10,000-foot grid ticks based on Utah coordinate system, north zone

1000-meter Universal Transverse Mercator grid ticks, zone 12, shown in blue

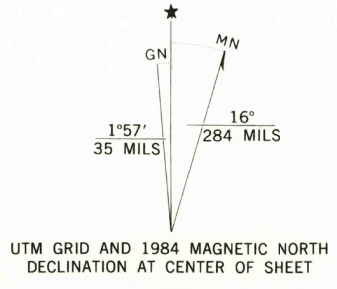
1927 North American Datum

To place on the predicted North American Datum 1983 move the projection lines 12 meters north and 71 meters east as shown by dashed corner ticks

Fine red dashed lines indicate selected fence lines

Revisions shown in purple and woodland compiled from aerial photographs taken 1982 and other sources

This information not field checked. Map edited 1984



SCALE 1:24,000

CONTOUR INTERVAL 20 FEET

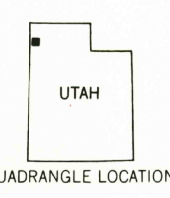
DOTTED LINES REPRESENT 10-FOOT CONTOURS

NATIONAL GEODETIC VERTICAL DATUM OF 1929

THIS MAP COMPLIES WITH NATIONAL MAP ACCURACY STANDARDS

FOR SALE BY U. S. GEOLOGICAL SURVEY, DENVER, COLORADO 80225, OR RESTON, VIRGINIA 22092

A FOLDER DESCRIBING TOPOGRAPHIC MAPS AND SYMBOLS IS AVAILABLE ON REQUEST



QUADRANGLE LOCATION

ROAD CLASSIFICATION

Medium-duty Light-duty

Unimproved dirt

State Route

LUCIN NW, UTAH

41113-D8-TF-024

1967

PHOTOREVISED 1984

DMA 5266 IV NW—SERIES V897

RETURN TO:
USGS AND HISTORICAL MAP ARCHIVES