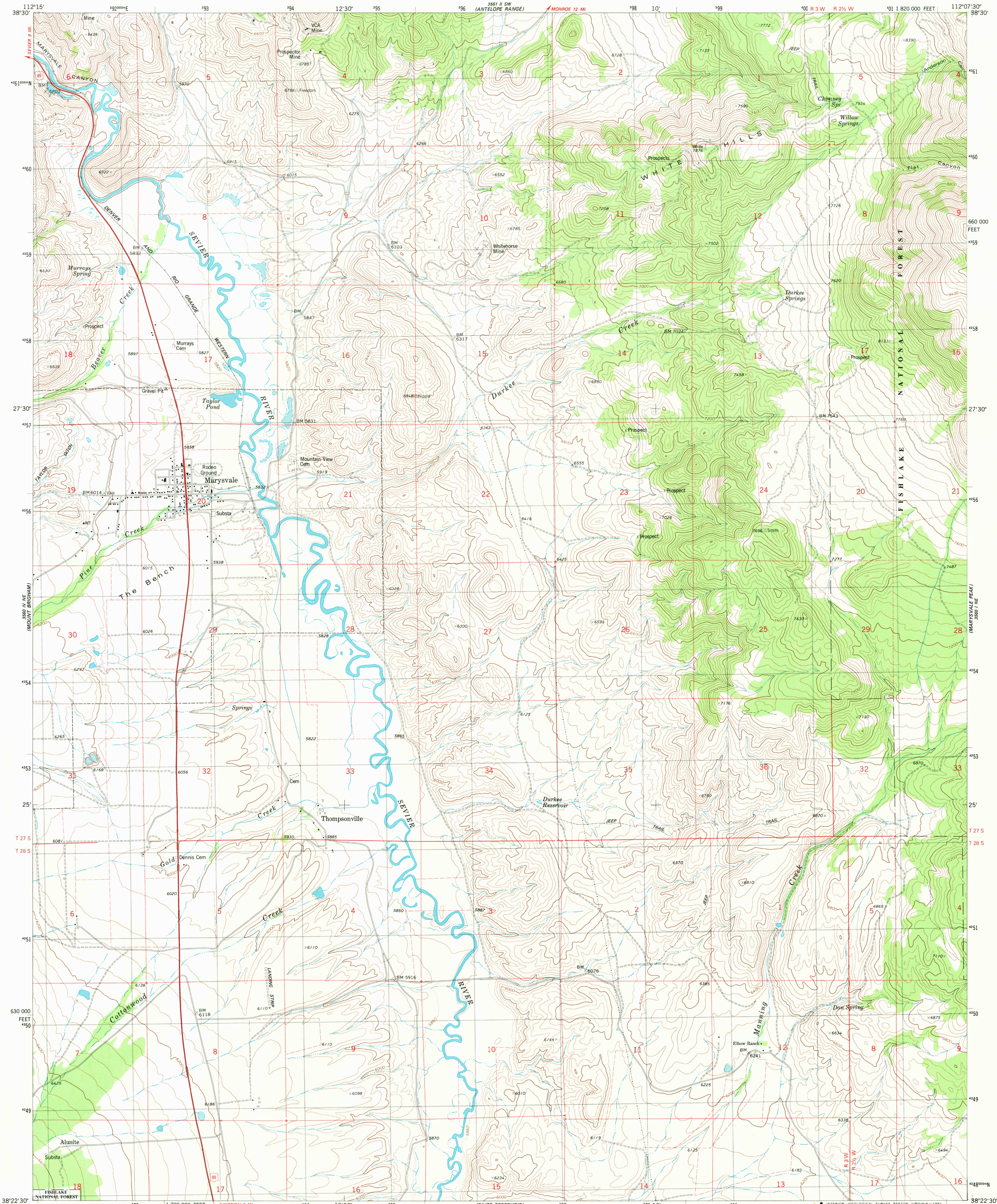
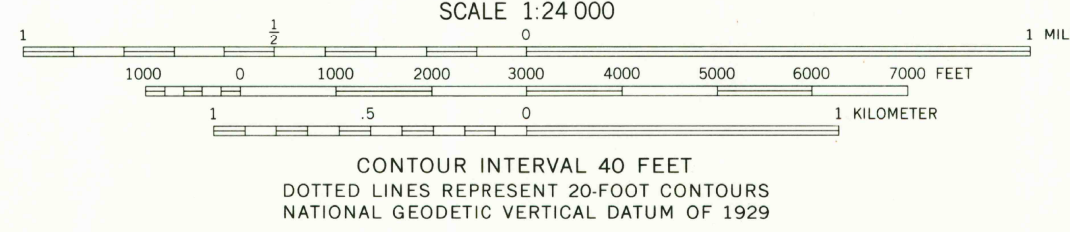
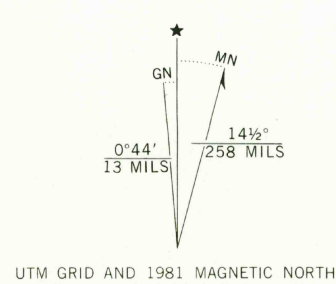


UNITED STATES
DEPARTMENT OF THE INTERIOR
GEOLOGICAL SURVEY

MARYSVALE QUADRANGLE
UTAH—PIUTE CO.
7.5 MINUTE SERIES (TOPOGRAPHIC)



Mapped, edited, and published by the Geological Survey
Control by USGS and NOS/NOAA
Topography by photogrammetric methods from aerial photographs
taken 1973. Field checked 1975. Map edited 1981
Projection and 10,000-foot grid ticks: Utah
coordinate system, south zone (Lambert conformal conic)
1000-meter Universal Transverse Mercator grid, zone 12
1927 North American datum
To place on the predicted North American Datum 1983
move the projection lines 7 meters north and
66 meters east as shown by dashed corner ticks
Fine red dashed lines indicate selected fence lines
There may be private inholdings within the boundaries of the
National or State reservations shown on this map



ROAD CLASSIFICATION	
Primary highway, hard surface	Light-duty road, hard or improved surface
Secondary highway, hard surface	Unimproved road
Interstate Route	U. S. Route
	State Route

MARYSVALE, UTAH
NW/4 MARYSVALE 15' QUADRANGLE
N3822.5-W11207.5/7.5
1981
DMA 3565 I NW-SERIES V897

THIS MAP COMPLIES WITH NATIONAL MAP ACCURACY STANDARDS
FOR SALE BY U. S. GEOLOGICAL SURVEY, DENVER, COLORADO 80225, OR RESTON, VIRGINIA 22092
A FOLDER DESCRIBING TOPOGRAPHIC MAPS AND SYMBOLS IS AVAILABLE ON REQUEST

USGS
HISTORICAL FILE
NATIONAL MAPPING DIVISION

AUG 3 1981
2000