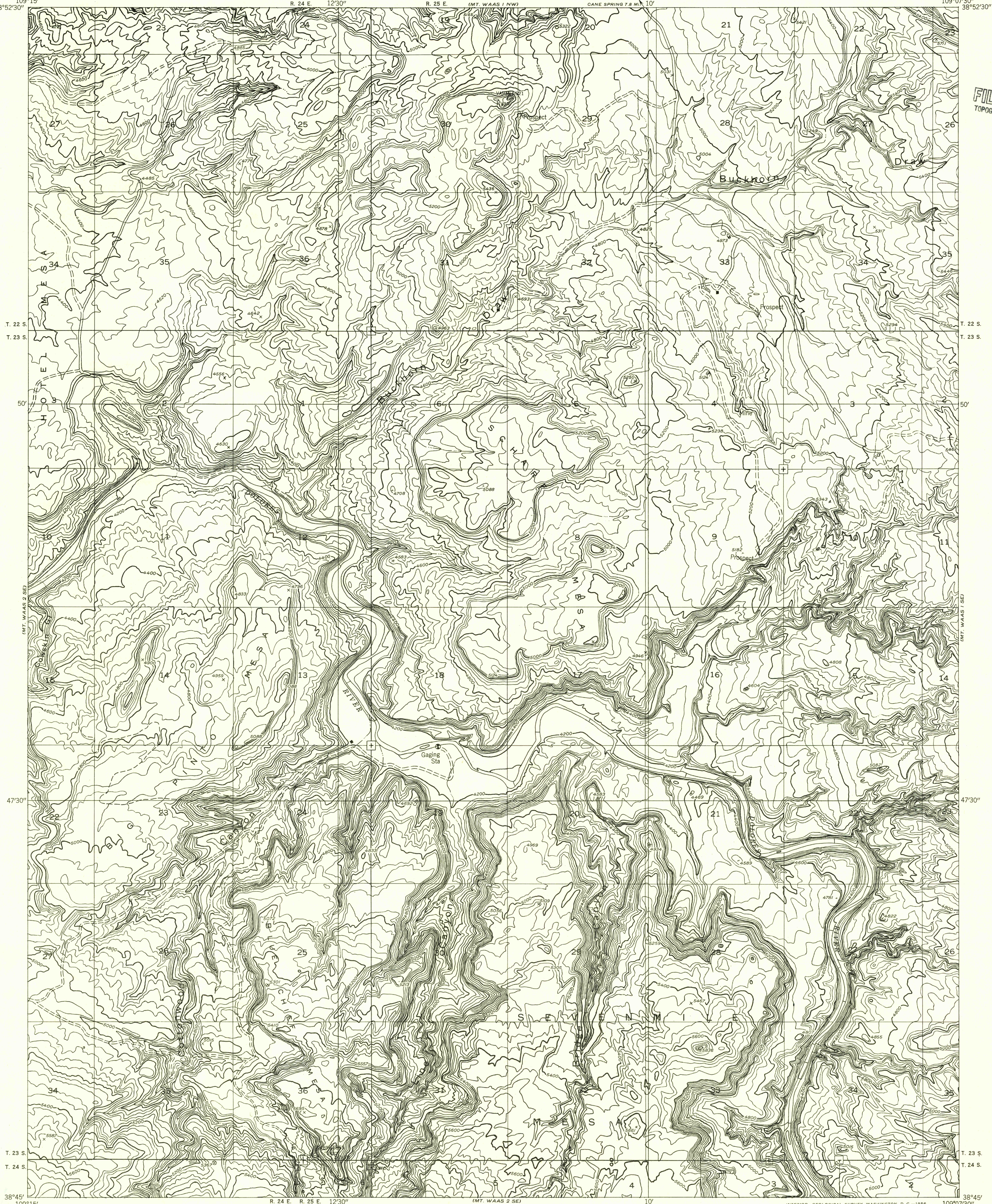


U.S.G.S.
FILE COPY
TOPOGRAPHIC DIVISION

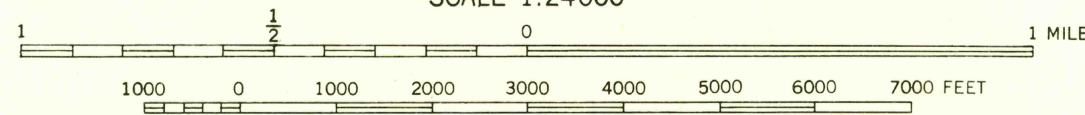


Mapped by the Geological Survey 1954

Topography by multiplex methods from
aerial photographs taken 1953

Symbols and other detail herein
drawn for 1:62 500 scale publication

SCALE 1:24000



ROAD CLASSIFICATION

Improved ===== Unimproved =====

TRUE NORTH
MAGNETIC NORTH
15°

APPROXIMATE MEAN DECLINATION, 1954

CONTOUR INTERVAL 40 FEET
CONTOUR INTERVAL ON RIVER SURFACE 5 FEET
DATUM IS MEAN SEA LEVEL

MT. WAAS 1 SW, UTAH
N3845—W10907.5/7.5

U.S.G.S.
FILE COPY
TOPOGRAPHIC DIVISION

2040