

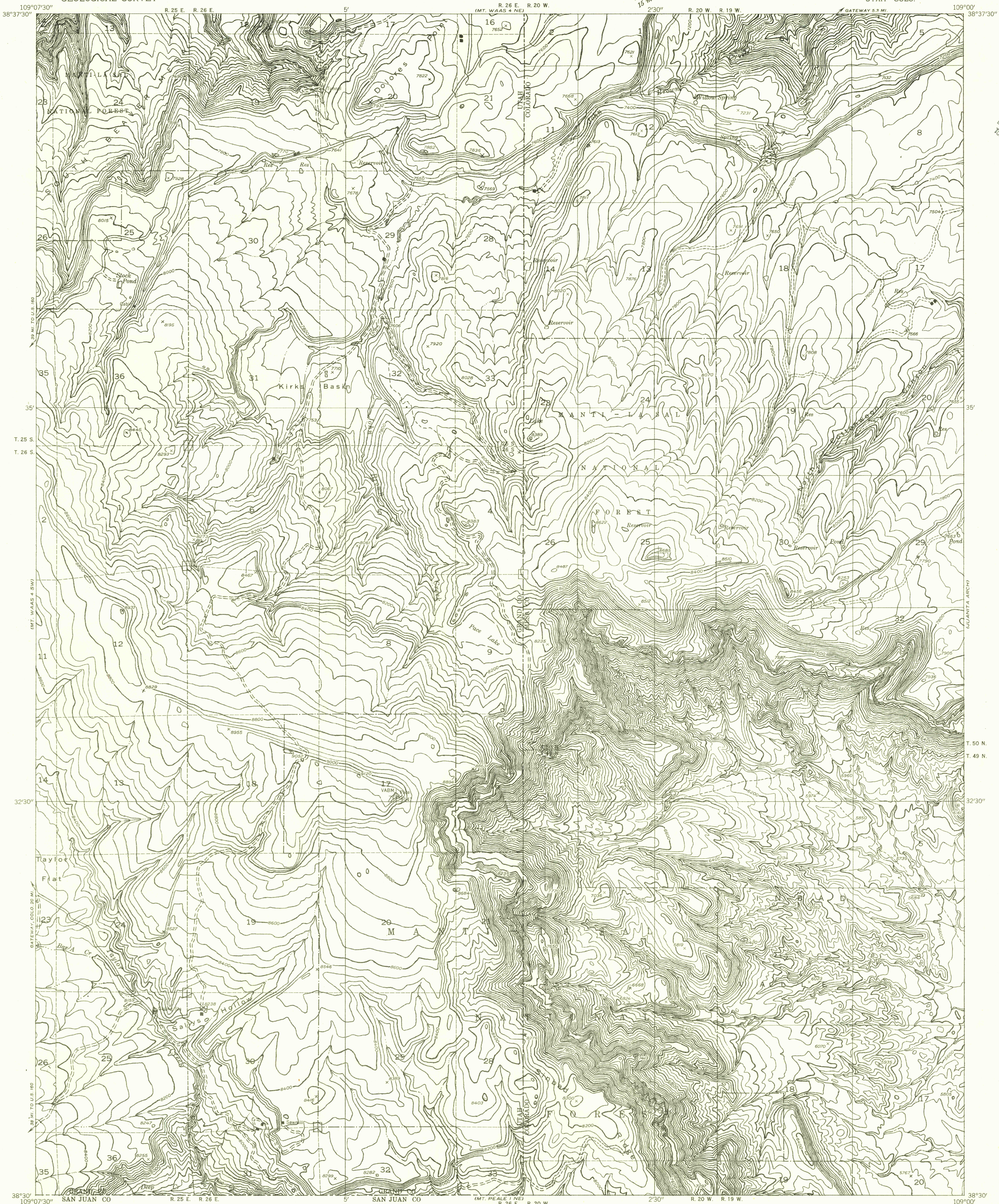
(MT. WAAS 4 NW)

DEPARTMENT OF THE INTERIOR
GEOLOGICAL SURVEY

Preliminary edition
Pending completion of 1:62,500 scale
15 minute maps covering this area

MT. WAAS 4 SE QUADRANGLE
UTAH-COLO.

(GATEWAY)

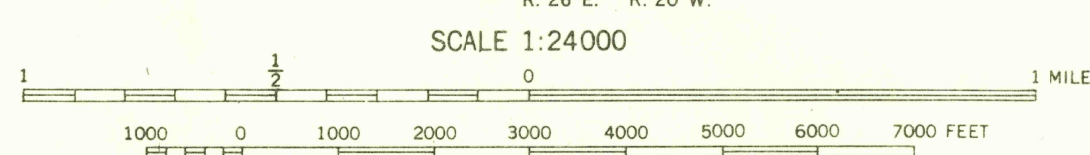


U.S.G.S.
FILE COPY
TOPOGRAPHIC DIVISION

(MT. PEALE 1 NW)

Maped by the Geological Survey 1954
Topography by multiplex methods from
aerial photographs taken 1953
Dashed land lines indicate approximate locations
Symbols and other detail herein
drawn for 1:62,500 scale publication

TRUE NORTH
MAGNETIC NORTH
APPROXIMATE MEAN
DECLINATION, 1954



CONTOUR INTERVAL 40 FEET
DATUM IS MEAN SEA LEVEL

ROAD CLASSIFICATION
Improved ——— Unimproved - - - - -

U.S.G.S.
FILE COPY
TOPOGRAPHIC DIVISION

MT. WAAS 4 SE, UTAH-COLO.
N3830-W10900/7.5

NOV 21 1955