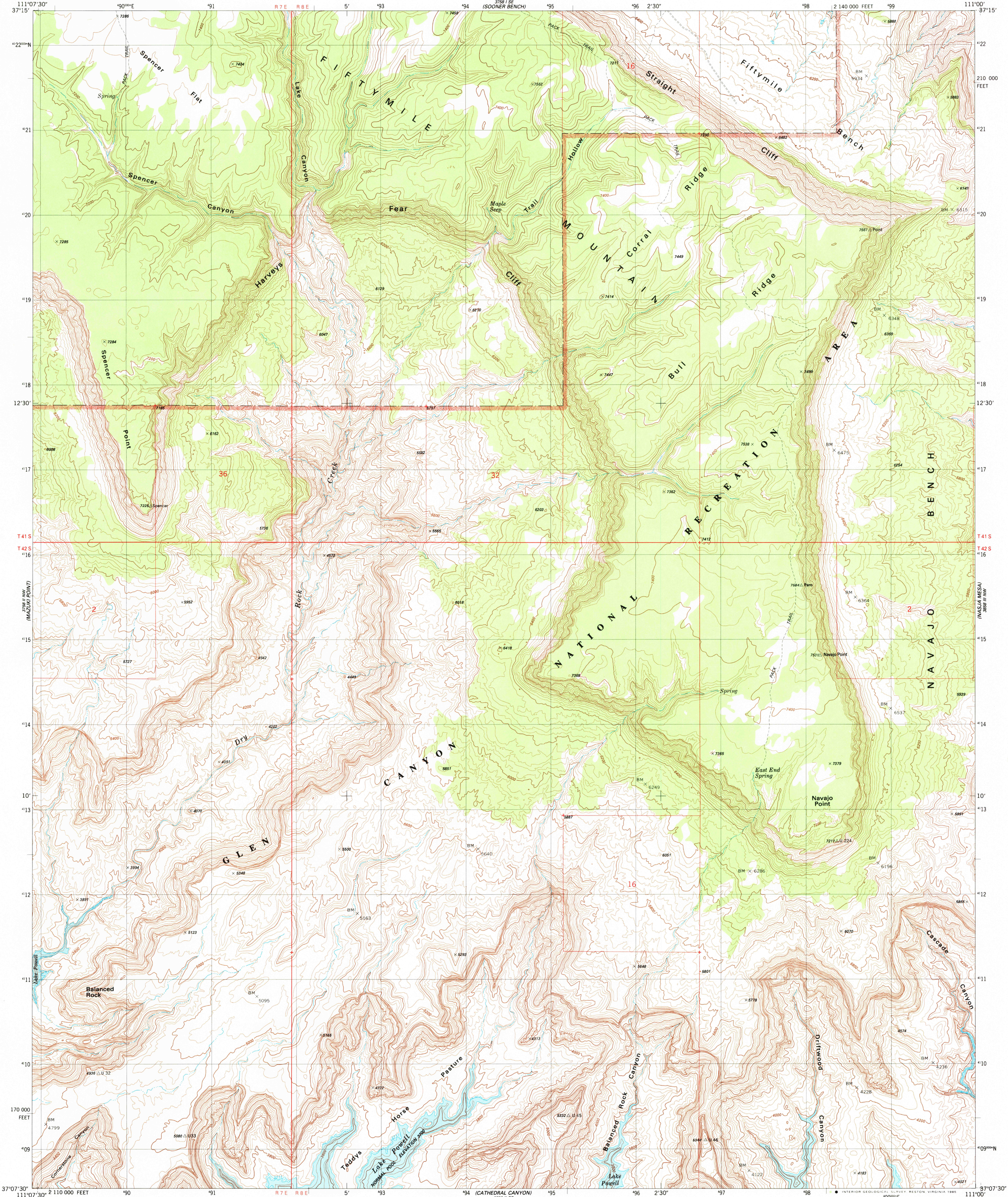


UNITED STATES  
DEPARTMENT OF THE INTERIOR  
GEOLOGICAL SURVEY

NAVAJO POINT QUADRANGLE  
UTAH-KANE CO  
7.5 MINUTE SERIES (TOPOGRAPHIC)  
NE/4 CUMMINGS MESA 15' QUADRANGLE



Mapped, edited, and published by the Geological Survey

Control by USGS and NOS/NOAA

Topography by photogrammetric methods from aerial photographs taken 1976. Field checked 1979. Map edited 1985

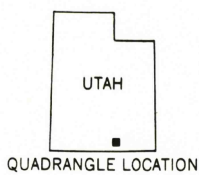
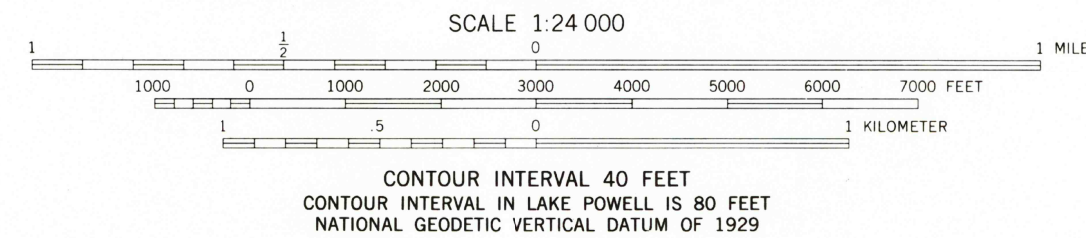
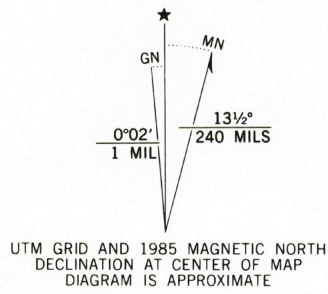
Projection and 10,000-foot grid ticks: Utah coordinate system, south zone (Lambert conformal conic) 1000-meter Universal Transverse Mercator grid, zone 12 1927 North American Datum

To place on the predicted North American Datum 1983 move the projection lines 5 meters north and 64 meters east as shown by dashed corner ticks

Where omitted, land lines have not been established

Areas covered by dashed light-blue pattern are subject to controlled inundation

There may be private inholdings within the boundaries of the National or State reservations shown on this map



ROAD CLASSIFICATION	
Primary highway, hard surface	Light duty road, hard or improved surface
Secondary highway, hard surface	Unimproved road
Interstate Route	U S Route
	State Route

NAVAJO POINT, UTAH  
NE/4 CUMMINGS MESA 15' QUADRANGLE  
37111-B1-TF-024

1985

DMA 3758 II NE-SERIES V897