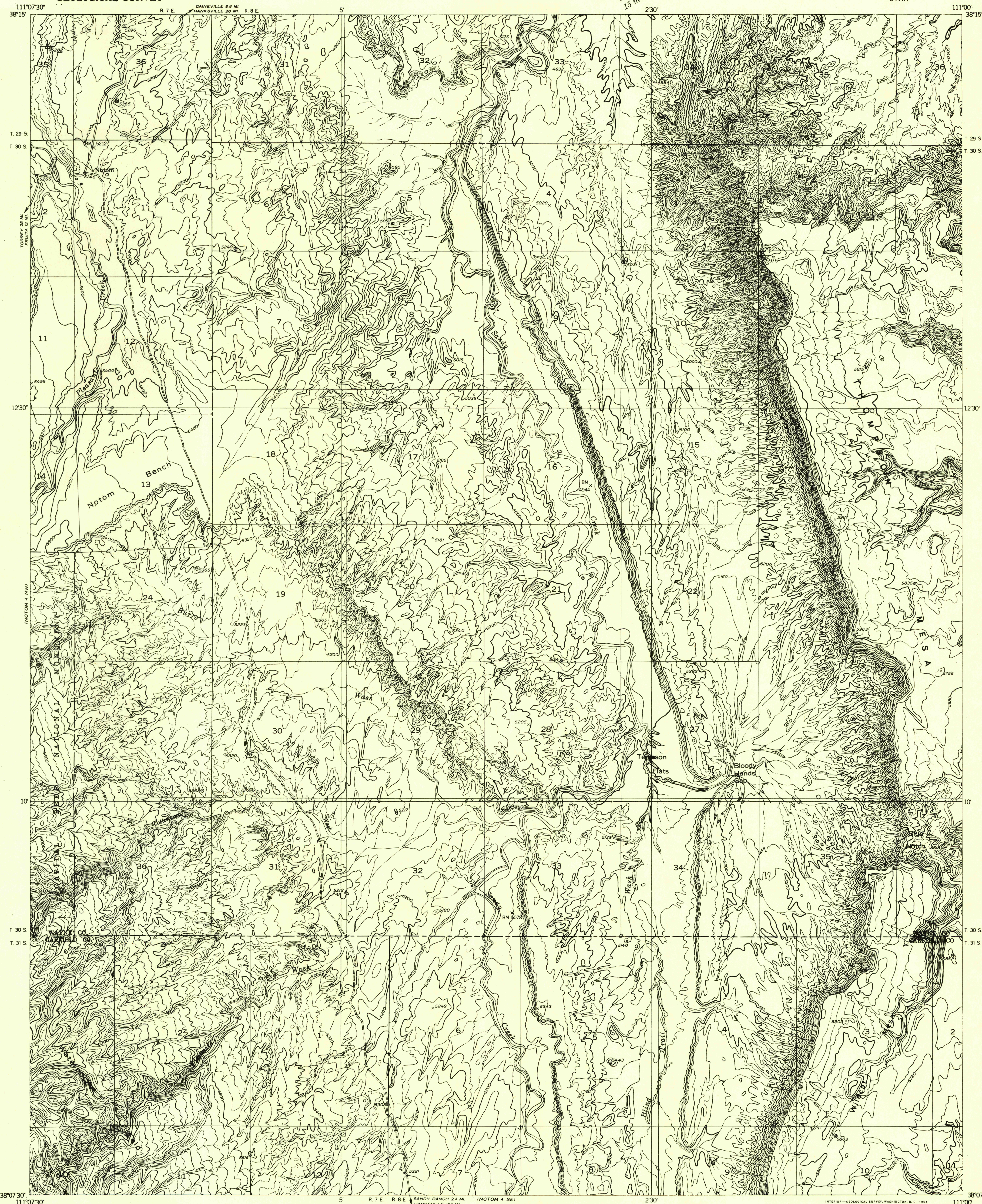


DEPARTMENT OF THE INTERIOR  
GEOLOGICAL SURVEY

Preliminary edition  
Pending completion of 1:62,500 scale  
15 minute maps covering this area

NOTOM 4 NE QUADRANGLE  
UTAH



Maped by the Geological Survey 1952  
Topography by multiplex methods from  
aerial photographs taken 1951

TRUE NORTH  
MAGNETIC NORTH  
APPROXIMATE MEAN  
DECLINATION, 1952

SCALE 1:24,000  
1 0 1000 2000 3000 4000 5000 6000 7000 FEET

CONTOUR INTERVAL 40 FEET  
DATUM IS MEAN SEA LEVEL

ROAD CLASSIFICATION  
Improved ——— Unimproved - - - - -

NOTOM 4 NE, UTAH  
N3807.5—W11100/7.5

JUN 24 1954