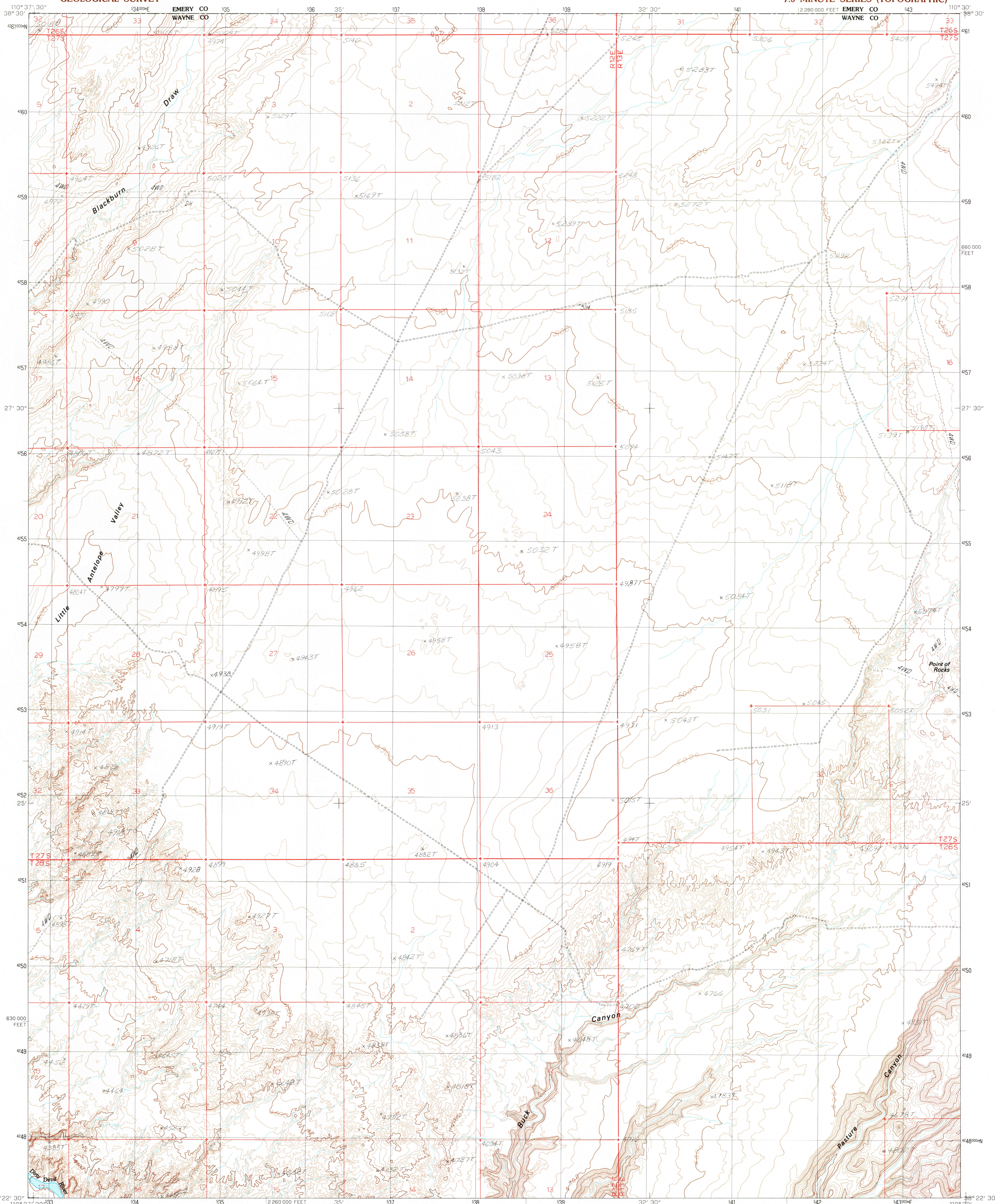


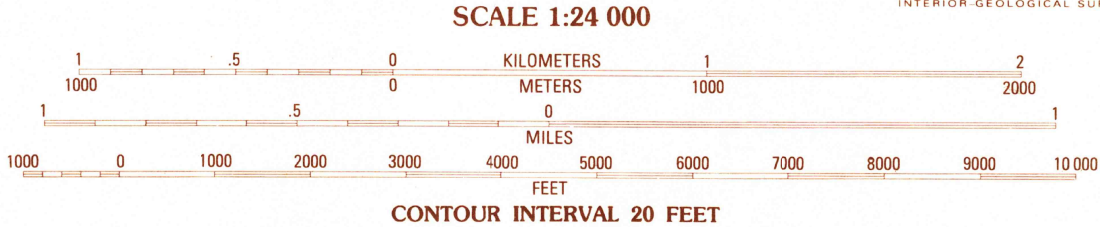
UNITED STATES  
DEPARTMENT OF THE INTERIOR  
GEOLOGICAL SURVEY

POINT OF ROCKS WEST QUADRANGLE  
UTAH  
7.5 MINUTE SERIES (TOPOGRAPHIC)



PRODUCED BY THE UNITED STATES GEOLOGICAL SURVEY  
CONTROL BY ..... USGS, NOS/NOAA  
COMPILED FROM AERIAL PHOTOGRAPHS TAKEN ..... 1957  
FIELD CHECKED ..... 1963  
LIMITED REVISION FROM AERIAL PHOTOGRAPHS TAKEN ..... 1981  
FIELD CHECKED ..... 1984. MAP EDITED ..... 1986  
PROJECTION ..... LAMBERT CONFORMAL CONIC  
GRID ..... 1000-METER UNIVERSAL TRANSVERSE MERCATOR ..... ZONE 12  
10,000-FOOT STATE GRID TICKS ..... UTAH, SOUTH ZONE  
UTM GRID DECLINATION ..... 016 EAST  
1986 MAGNETIC NORTH DECLINATION ..... 1330 EAST  
VERTICAL DATUM ..... NATIONAL GEODETIC VERTICAL DATUM OF 1929  
HORIZONTAL DATUM ..... 1927 NORTH AMERICAN DATUM  
To place on the predicted North American Datum of 1983,  
move the projection lines as shown by dashed corner ticks  
(6 meters north and 62 meters east).  
There may be private inholdings within the boundaries of any  
Federal and State Reservations shown on this map.  
Public land survey system is shown as published in 1963 and  
verified or supplemented in 1984.  
Where omitted, land lines have not been established.

**PROVISIONAL MAP**  
Produced from original  
manuscript drawings. Infor-  
mation shown as of date of  
field check. T



To convert meters to feet multiply by 3.2808  
To convert feet to meters multiply by .3048

THIS MAP COMPLIES WITH NATIONAL MAP ACCURACY STANDARDS  
FOR SALE BY U.S. GEOLOGICAL SURVEY, DENVER, COLORADO 80225  
OR RESTON, VIRGINIA 22092



|   |   |   |
|---|---|---|
| 1 | 2 | 3 |
| 4 | 5 | 6 |
| 7 | 8 | 9 |

ADJOINING 7.5' QUADRANGLE NAMES

1 Goblin Valley  
2 Gileon Butte  
3 The Flat Tops  
4 The North  
5 Point of Rocks East  
6 Fankleish  
7 Angel Cove  
8 Angel Point

ROAD LEGEND  
Improved Road .....  
Unimproved Road .....  
Trail .....  
Interstate Route ..... U.S. Route ..... State Route .....

POINT OF ROCKS WEST, UTAH  
PROVISIONAL EDITION 1986

38110-D5-TF-024

