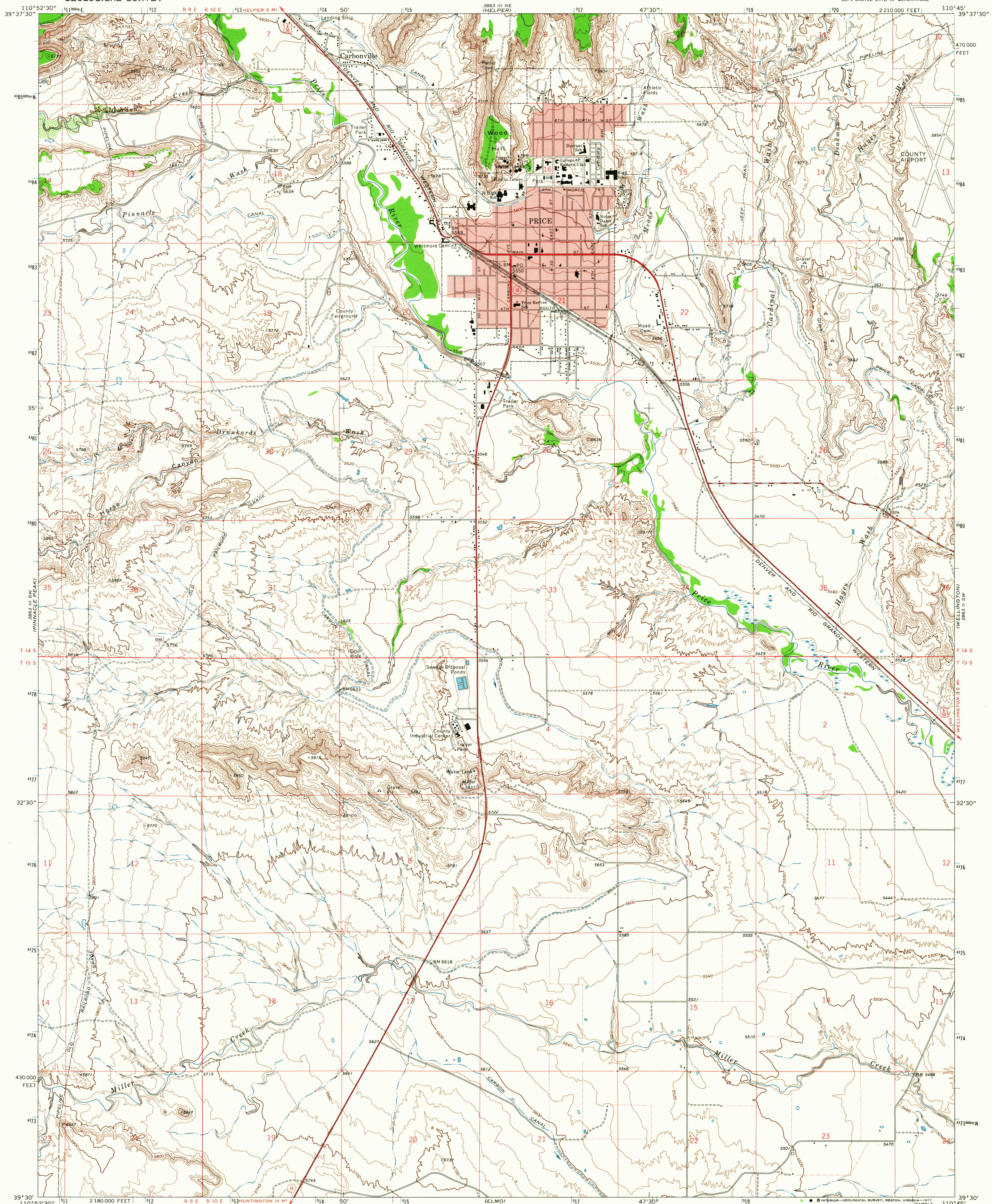


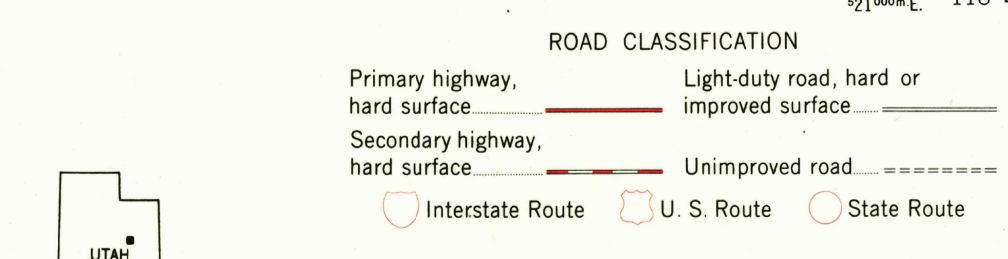
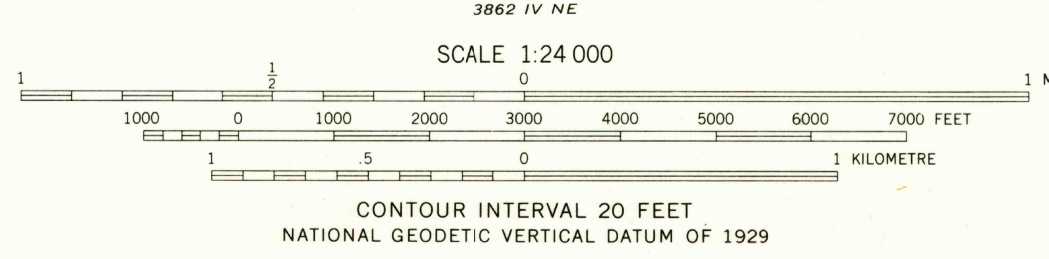
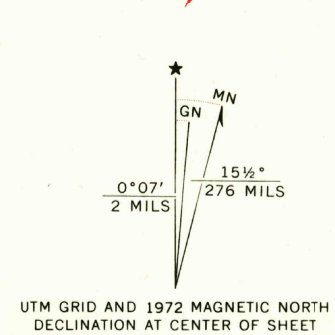
UNITED STATES  
DEPARTMENT OF THE INTERIOR  
GEOLOGICAL SURVEY

STATE OF UTAH  
UTAH GEOLOGICAL AND MINERAL SURVEY

PRICE QUADRANGLE  
UTAH-CARBON CO.  
7.5 MINUTE SERIES (TOPOGRAPHIC)  
SE 1/4 CASTLE GATE 15' QUADRANGLE



Mapped, edited, and published by the Geological Survey  
Control by USGS and NOS/NOAA  
Topography by photogrammetric methods from aerial  
photographs taken 1972. Field checked 1972  
Projection and 10,000-foot grid ticks: Utah  
coordinate system, central zone (Lambert conformal conic)  
1000-metre Universal Transverse Mercator grid ticks,  
zone 12, shown in blue. 1927 North American datum  
Fine red dashed lines indicate selected fence lines  
Red tint indicates areas in which only landmark buildings are shown



THIS MAP COMPLIES WITH NATIONAL MAP ACCURACY STANDARDS  
FOR SALE BY U.S. GEOLOGICAL SURVEY, DENVER, COLORADO 80225, OR RESTON, VIRGINIA 22092  
A FOLDER DESCRIBING TOPOGRAPHIC MAPS AND SYMBOLS IS AVAILABLE ON REQUEST

USGS  
Historical File  
Topographic Division

PRICE, UTAH  
SE 1/4 CASTLE GATE 15' QUADRANGLE  
N3930-W11045/7.5  
1972  
AMS 3863 III SE-SERIES V697

MAR 03 1977  
2878