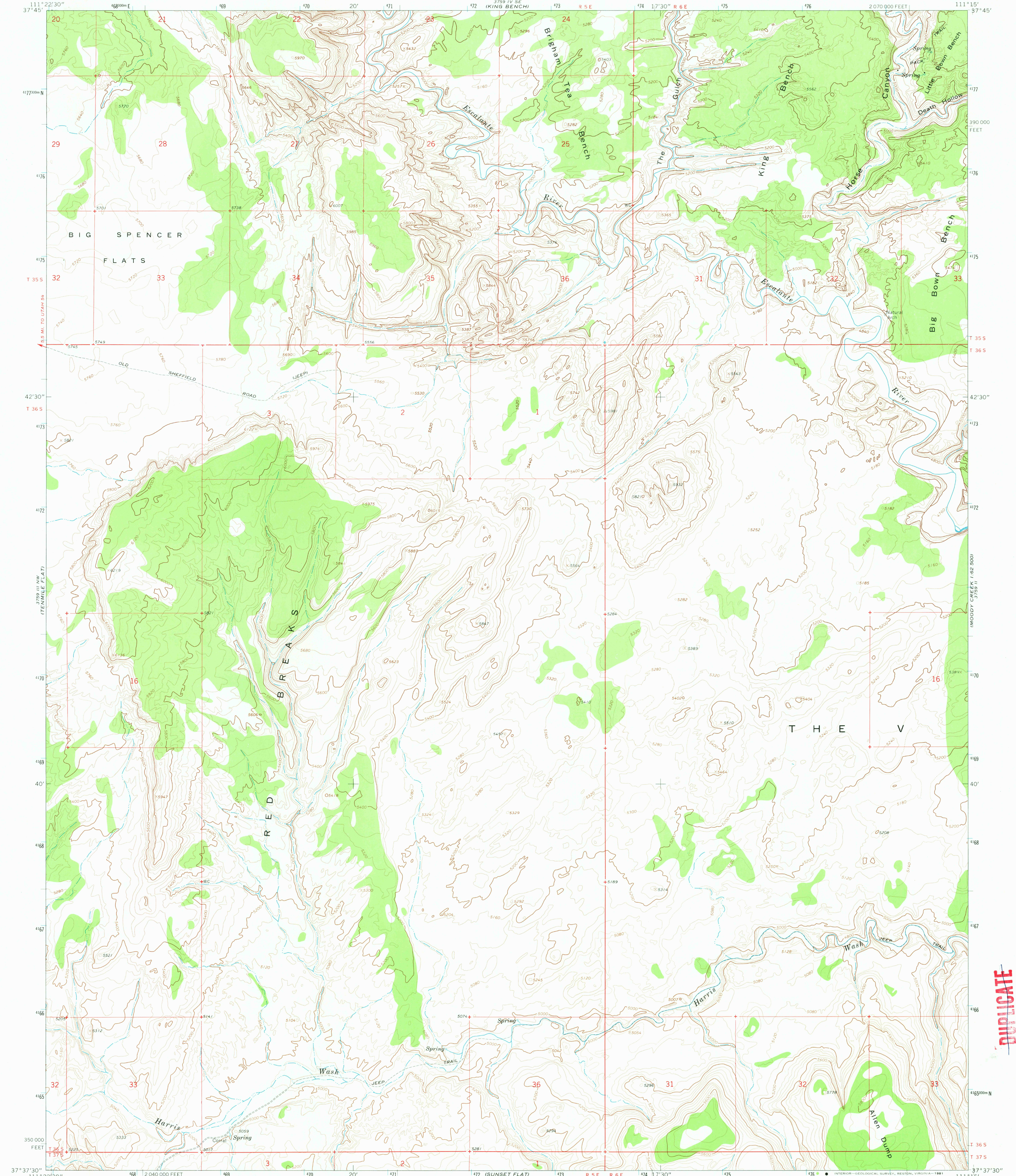
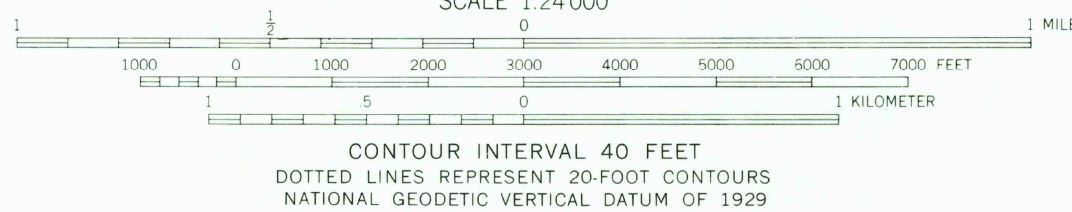
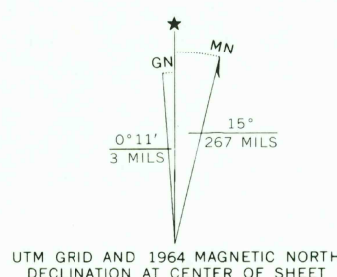


UNITED STATES  
DEPARTMENT OF THE INTERIOR  
GEOLOGICAL SURVEY

RED BREAKS QUADRANGLE  
UTAH—GARFIELD CO.  
7.5 MINUTE SERIES (TOPOGRAPHIC)



Mapped, edited, and published by the Geological Survey  
Control by USGS and USC&GS  
Topography by photogrammetric methods from aerial  
photographs taken 1958. Field checked 1964  
Polyconic projection. 1927 North American datum  
10,000-foot grid based on Utah coordinate system, south zone  
1000-meter Universal Transverse Mercator grid ticks,  
zone 12, shown in blue  
Where omitted, land lines have not been established  
To place on the predicted North American Datum 1983  
move the projection lines 5 meters north and  
64 meters east as shown by dashed corner ticks  
Map photoinspected 1976  
No major culture or drainage changes observed



THIS MAP COMPLIES WITH NATIONAL MAP ACCURACY STANDARDS  
FOR SALE BY U. S. GEOLOGICAL SURVEY, DENVER, COLORADO 80225, OR RESTON, VIRGINIA 22092  
A FOLDER DESCRIBING TOPOGRAPHIC MAPS AND SYMBOLS IS AVAILABLE ON REQUEST



USGS  
HISTORICAL FILE  
NATIONAL MAPS DIVISION

ROAD CLASSIFICATION  
Unimproved dirt =-----

RED BREAKS, UTAH  
N3737.5—W11115.7/7.5  
1964  
PHOTOINSPECTED 1976  
DMA 3759 III NE—SERIES V897

Duplicate

SEP 3 1981

1900