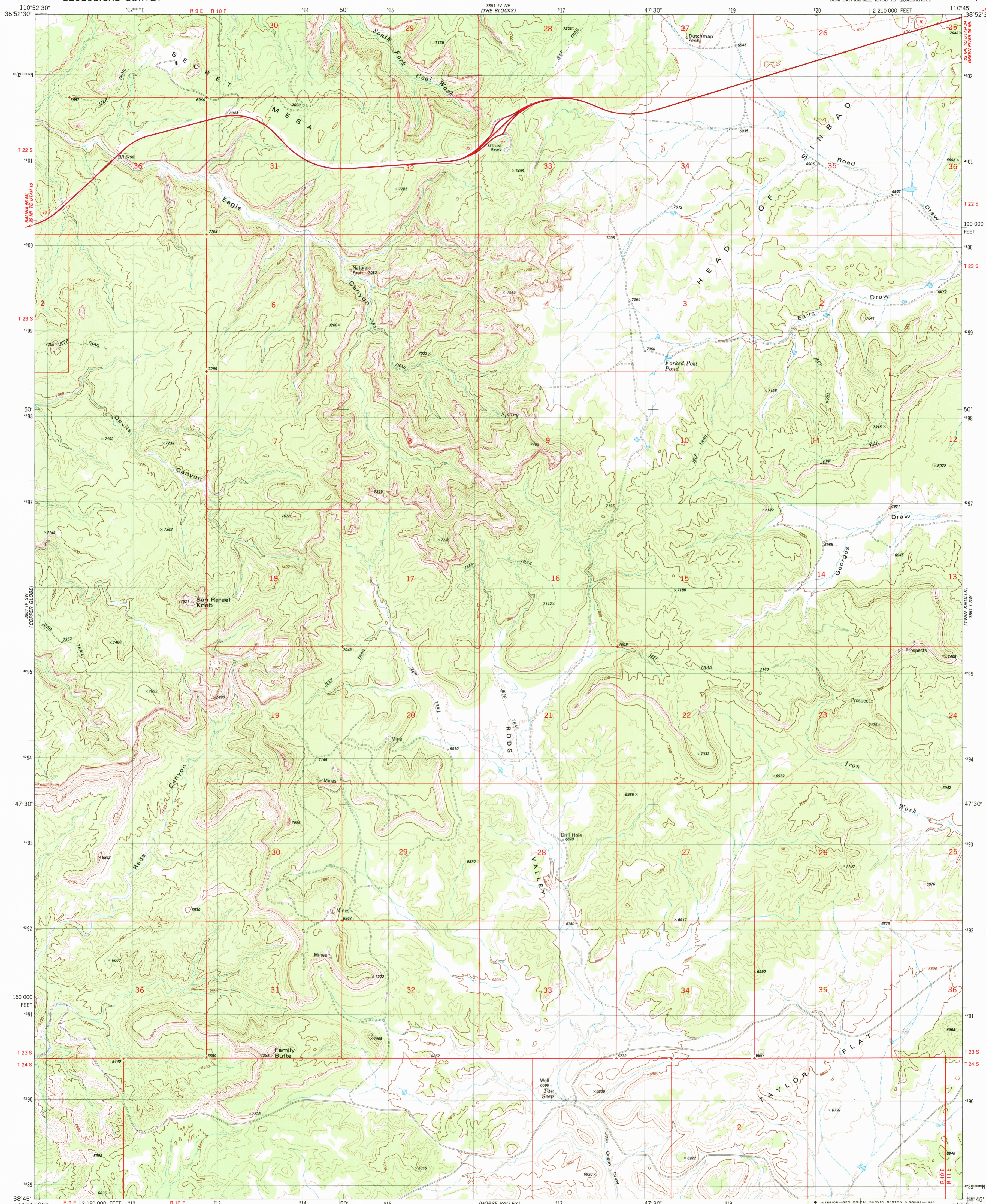


UNITED STATES
DEPARTMENT OF THE INTERIOR
GEOLOGICAL SURVEY

SAN RAFAEL KNOB QUADRANGLE
UTAH-EMERY CO.
7.5 MINUTE SERIES (TOPOGRAPHIC)
SE/4 SAN RAFAEL KNOB 15' QUADRANGLE



Mapped, edited, and published by the Geological Survey

Control by USGS and NOS/NOAA

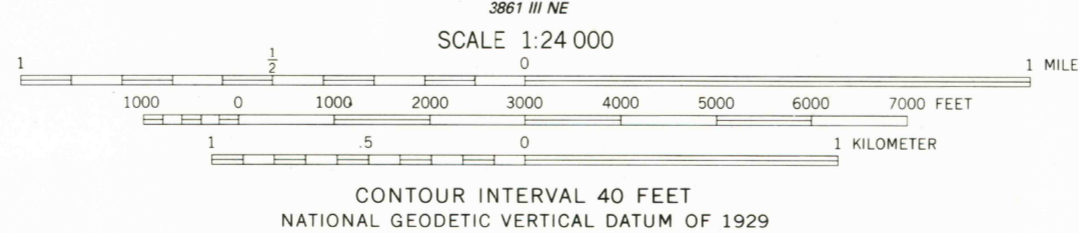
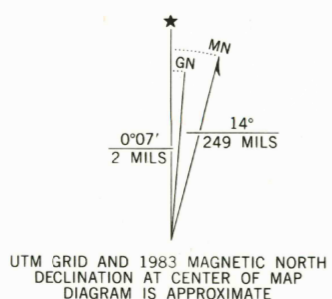
Topography by photogrammetric methods from aerial photographs taken 1974. Field checked 1976. Map edited 1983

Projection and 10,000-foot grid ticks: Utah coordinate system, central zone (Lambert conformal conic) 1000-meter Universal Transverse Mercator grid, zone 12 1927 North American datum

To place on the predicted North American Datum 1983 move the projection lines 7 meters north and 63 meters east as shown by dashed corner ticks

Fine red dashed lines indicate selected fence lines

Where omitted, land lines have not been established



ROAD CLASSIFICATION	
Primary highway, hard surface	Light-duty road, hard or improved surface
Secondary highway, hard surface	Unimproved road
Interstate Route	U. S. Route
	State Route

SAN RAFAEL KNOB, UTAH
SE/4 SAN RAFAEL KNOB 15' QUADRANGLE
N3845-W11045/7.5

1983

DMA 3861 IV SE-SERIES V897

THIS MAP COMPLIES WITH NATIONAL MAP ACCURACY STANDARDS
FOR SALE BY U. S. GEOLOGICAL SURVEY, DENVER, COLORADO 80225, OR RESTON, VIRGINIA 22092
A FOLDER DESCRIBING TOPOGRAPHIC MAPS AND SYMBOLS IS AVAILABLE ON REQUEST

RETURN TO:
USGS AND HISTORICAL MAP ARCHIVES

4/23/84