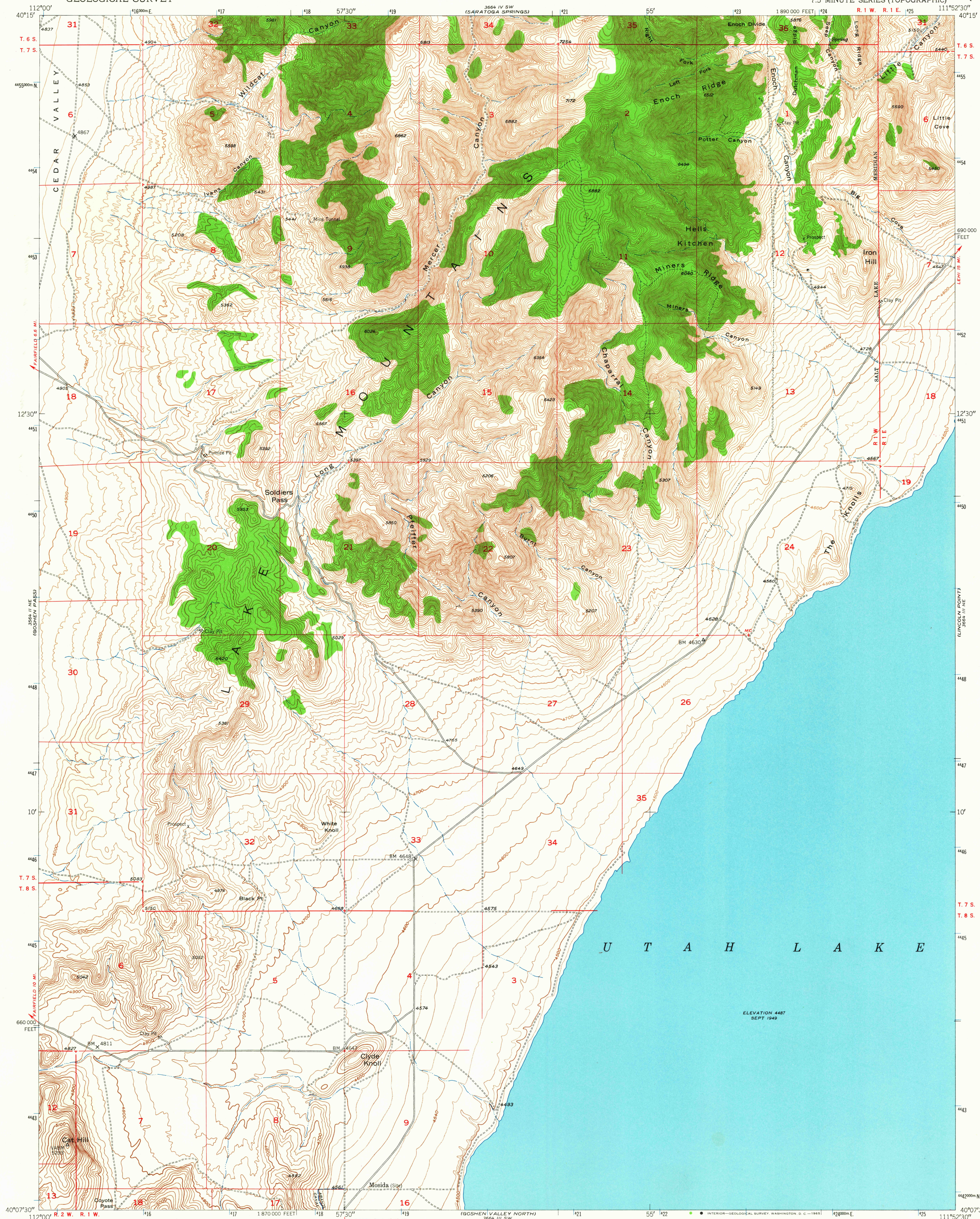
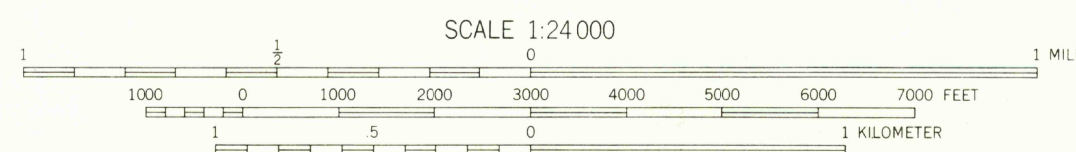
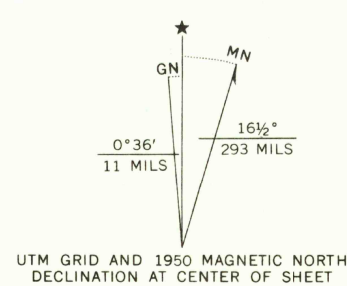


UNITED STATES
DEPARTMENT OF THE INTERIOR
GEOLOGICAL SURVEY

SOLDIERS PASS QUADRANGLE
UTAH-UTAH CO.
7.5 MINUTE SERIES (TOPOGRAPHIC)



Mapped, edited, and published by the Geological Survey
Control by USGS
Topography from aerial photographs by multiplex methods
and by plane-table surveys 1950
Aerial photographs taken 1947
Polyconic projection. 1927 North American datum
10,000-foot grid based on Utah coordinate system,
central zone
1000-meter Universal Transverse Mercator grid ticks,
zone 12, shown in blue



CONTOUR INTERVAL 20 FEET
DOTTED LINES REPRESENT HALF-INTERVAL CONTOURS
DATUM IS MEAN SEA LEVEL

THIS MAP COMPLIES WITH NATIONAL MAP ACCURACY STANDARDS
FOR SALE BY U.S. GEOLOGICAL SURVEY, DENVER, COLORADO 80225, OR WASHINGTON, D.C. 20242
A FOLDER DESCRIBING TOPOGRAPHIC MAPS AND SYMBOLS IS AVAILABLE ON REQUEST

USGS
Historical File
Topographic Division

ROAD CLASSIFICATION
Heavy-duty ——— 4 LANE 6 LANE Light-duty ———
Medium-duty ——— 4 LANE 6 LANE Unimproved dirt ———
U. S. Route ——— State Route ———

U.S.G.S.
COPY
TOPOGRAPHIC DIVISION

SOLDIERS PASS, UTAH
N4007.5-W11152.5/7.5
1950
AMS 3664 III NW-SERIES V897

MAR 29 1966

1450