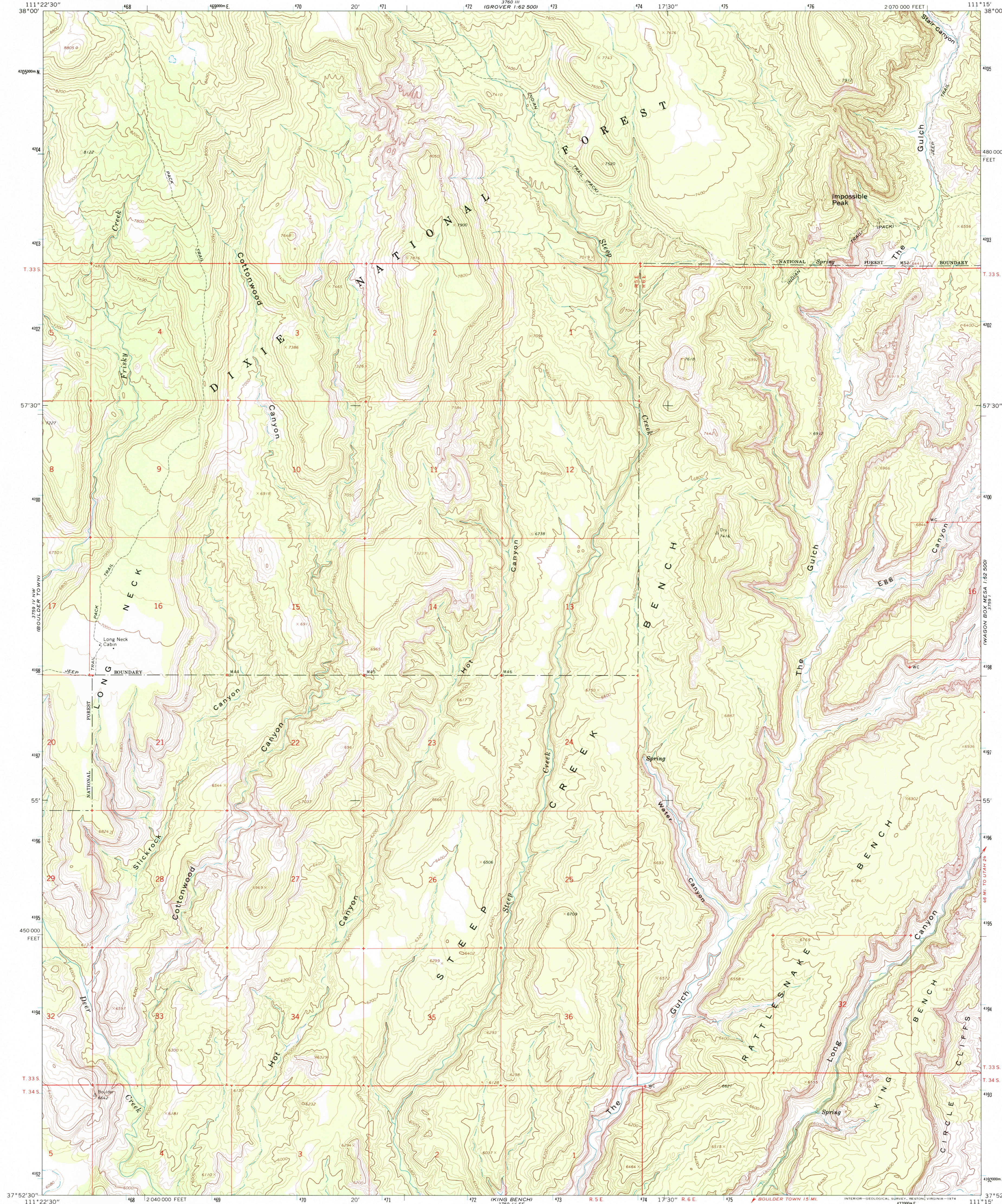


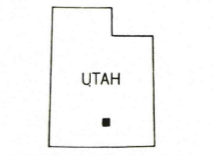
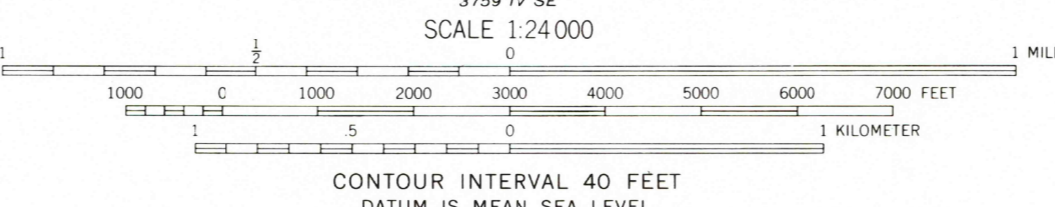
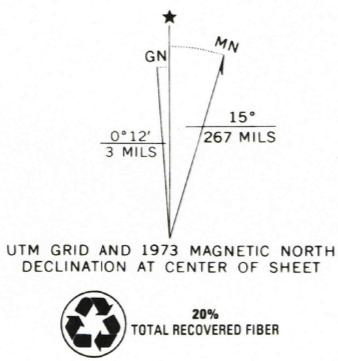


U.S. DEPARTMENT OF THE INTERIOR
U.S. GEOLOGICAL SURVEY

STEEP CREEK BENCH QUADRANGLE
UTAH—GARFIELD CO.
7.5 MINUTE SERIES (TOPOGRAPHIC)



Mapped, edited, and published by the Geological Survey
Control by USGS and USC&GS
Topography by photogrammetric methods from aerial
photographs taken 1958. Field checked 1964
Polyconic projection. 1927 North American datum
10,000-foot grid based on Utah coordinate system, south zone
1000-meter Universal Transverse Mercator grid ticks,
zone 12, shown in blue
Where omitted, land lines have not been established



RECEIVED
JUN 30 2002
ROAD CLASSIFICATION
Light-duty
HISTORICAL MAP ARCHIVES

STEEL CREEK BENCH, UTAH
N3752.5—W11115.7.5

1964
MINOR REVISIONS 1973
AMS 3759 IV NE—SERIES V897

THIS MAP COMPLIES WITH NATIONAL MAP ACCURACY STANDARDS
FOR SALE BY U.S. GEOLOGICAL SURVEY, P.O. BOX 25286, DENVER, COLORADO 80225
A FOLDER DESCRIBING TOPOGRAPHIC MAPS AND SYMBOLS IS AVAILABLE ON REQUEST

