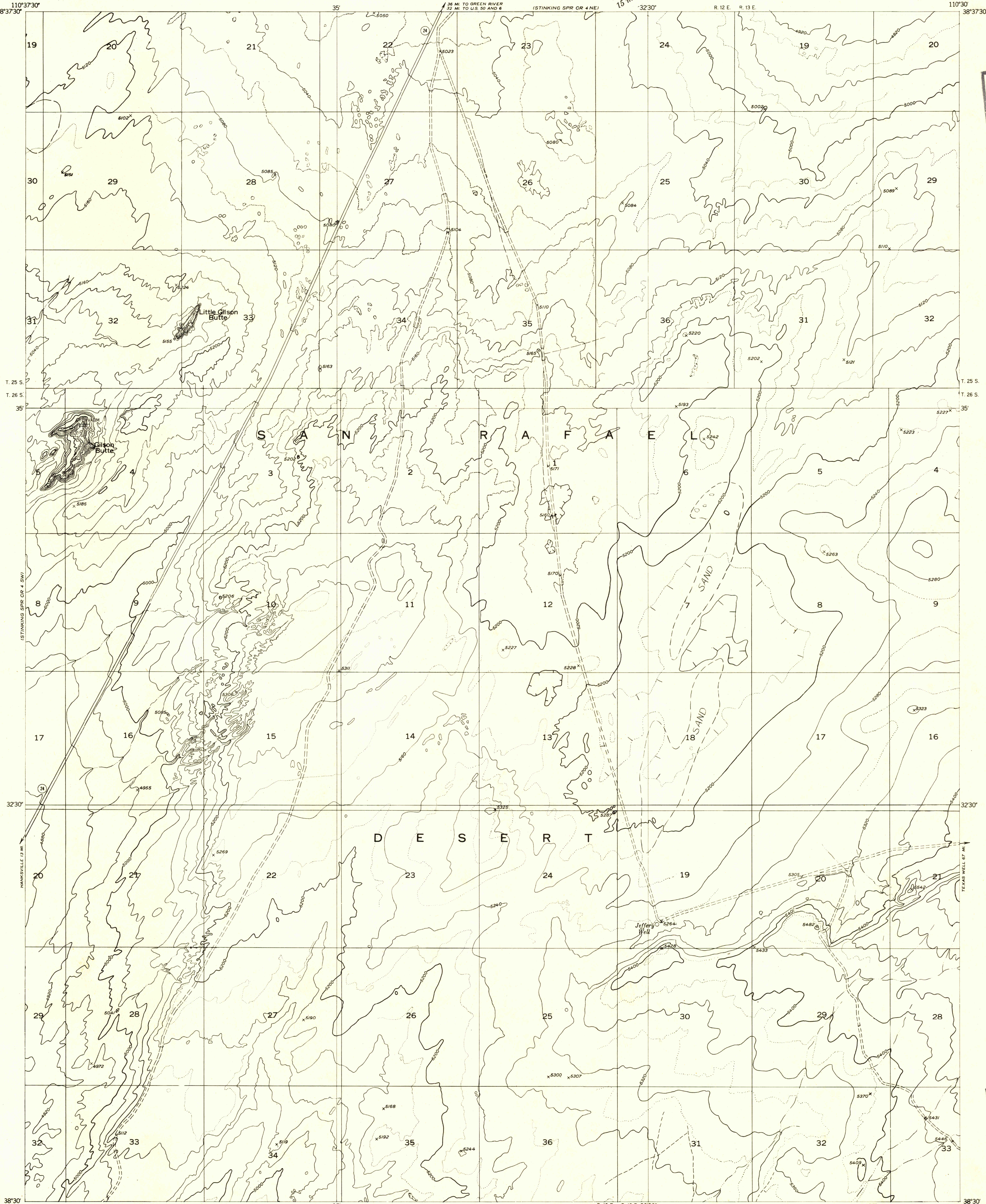


DEPARTMENT OF THE INTERIOR
GEOLOGICAL SURVEY

Preliminary edition
Pending completion of 1:62,500 scale
15 minute maps covering this area

STINKING SPRING CREEK 4 SE QUADRANGLE
UTAH-EMERY CO.

110°30' 38°37'30"



FILE COPY

FILE COPY

Mapped by the Geological Survey 1953

Topography by multiplex methods from
aerial photographs taken 1951-52

TRUE NORTH
MAGNETIC NORTH
APPROXIMATE MEAN
DECLINATION, 1953

SCALE 1:24000
1 0 1000 2000 3000 4000 5000 6000 7000 FEET
CONTOUR INTERVAL 40 FEET
DATUM IS MEAN SEA LEVEL

USGS
Historical File
Topographic Division

ROAD CLASSIFICATION
Improved ——— Unimproved - - - - -

STINKING SPRING CREEK 4 SE, UTAH
N3830-W11030/7.5

JUN 22 1954