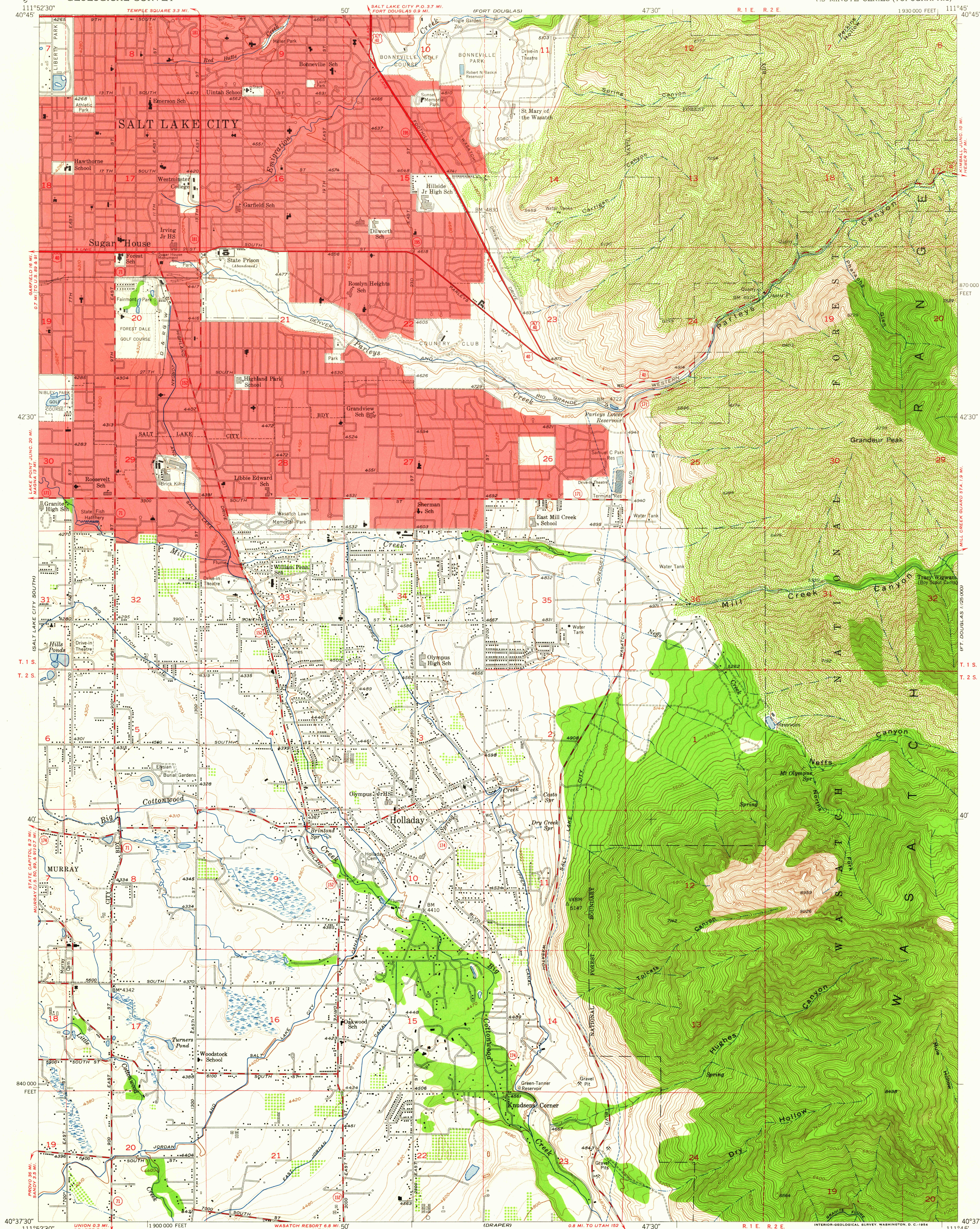


UNITED STATES  
DEPARTMENT OF THE INTERIOR  
GEOLOGICAL SURVEY

SUGAR HOUSE QUADRANGLE  
UTAH—SALT LAKE CO.  
7.5 MINUTE SERIES (TOPOGRAPHIC)



Mapped, edited, and published by the Geological Survey

Control by USGS and USC&GS

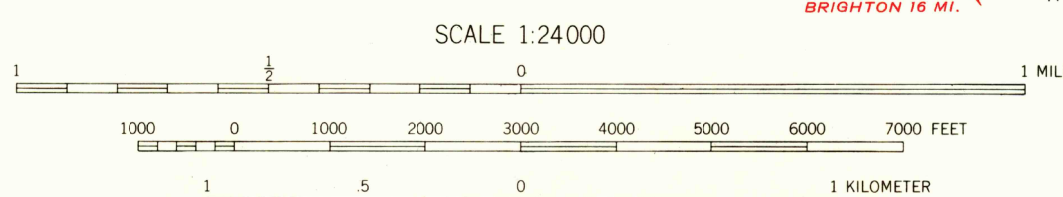
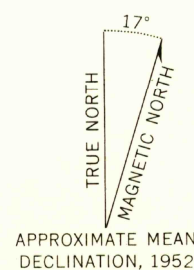
Topography from aerial photographs by multiplex methods  
and by plane-table surveys 1925 and 1934  
Aerial photographs taken 1950. Field check 1952

Polyconic projection. 1927 North American datum  
10,000-foot grid based on Utah coordinate system, central zone

Red tint indicates areas in which only landmark buildings are shown

Dashed land lines indicate approximate locations

Unchecked elevations are shown in brown

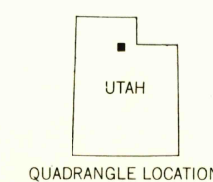


DATUM IS MEAN SEA LEVEL

THIS MAP COMPLIES WITH NATIONAL MAP ACCURACY STANDARDS

FOR SALE BY U. S. GEOLOGICAL SURVEY, FEDERAL CENTER, DENVER, COLORADO OR WASHINGTON 25, D. C.  
A FOLDER DESCRIBING TOPOGRAPHIC MAPS AND SYMBOLS IS AVAILABLE ON REQUEST

USGS  
Historical File  
Topographic Division



ROAD CLASSIFICATION  
Heavy-duty ——— 4 LANE 6 LANE Light-duty ———  
Medium-duty ——— 4 LANE 6 LANE Unimproved dirt ———  
U. S. Route ——— State Route ———

SUGAR HOUSE, UTAH  
N4037.5—W11145/7.5

1952

FEB 12 1963

925