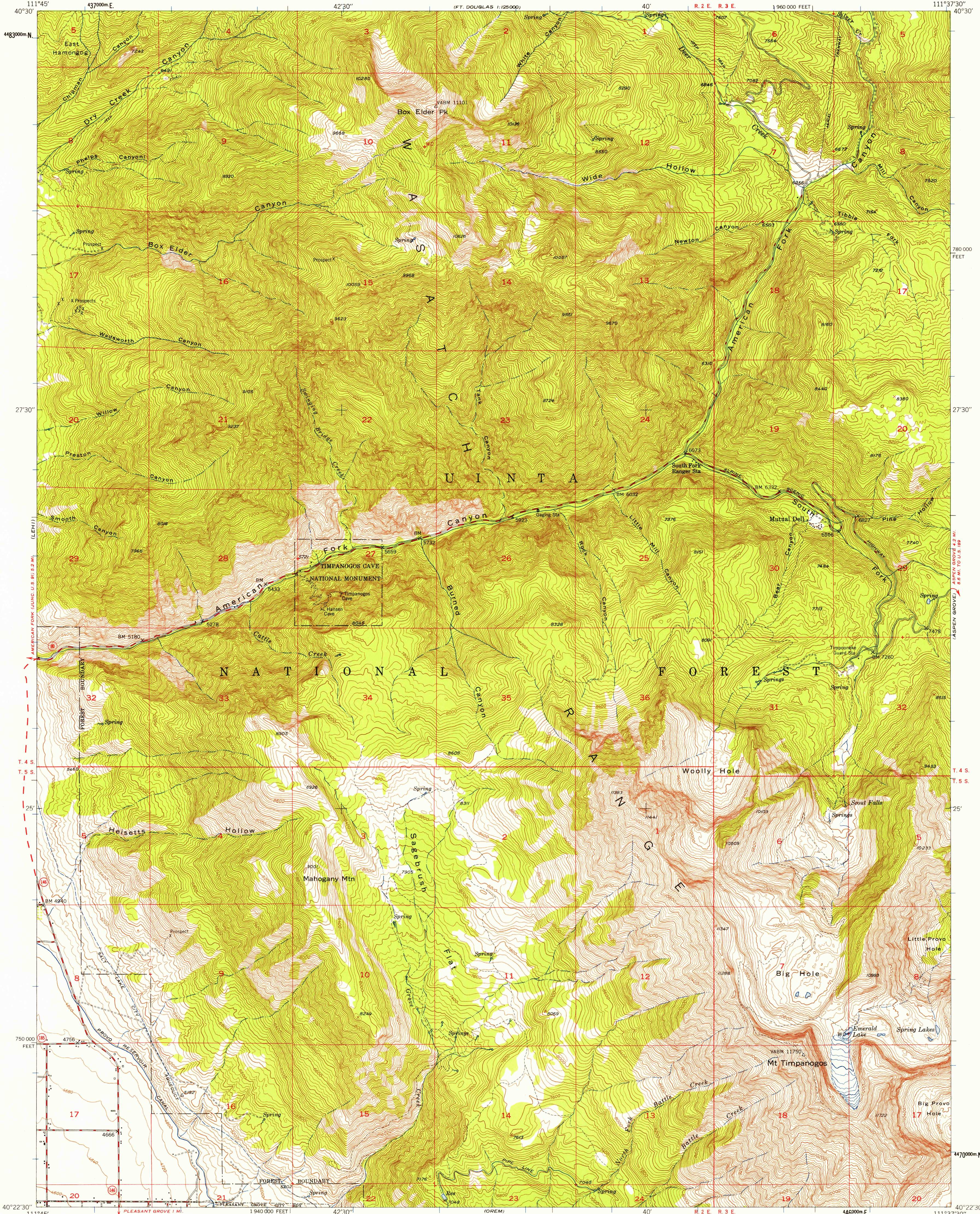
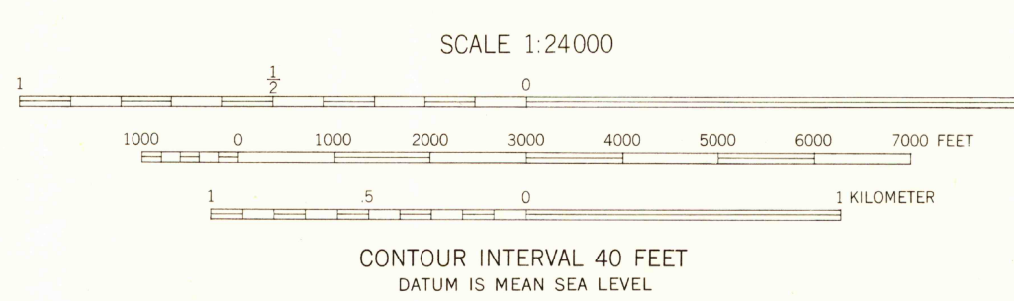


UNITED STATES
DEPARTMENT OF THE INTERIOR
GEOLOGICAL SURVEY

TIMPANOGOS CAVE QUADRANGLE
UTAH-UTAH CO.
7.5 MINUTE SERIES (TOPOGRAPHIC)



Mapped, edited, and published by the Geological Survey
Control by USGS and USC&GS
Topography from aerial photographs by multiple methods
Aerial photographs taken 1946. Field check 1948
Polyconic projection. 1927 North American datum
10,000-foot grid based on Utah coordinate system,
central zone
1000-meter Universal Transverse Mercator grid ticks,
zone 12, shown in blue



ROAD CLASSIFICATION
HARD-SURFACE ALL WEATHER ROADS DRY WEATHER ROADS
Heavy-duty ———— +LANE 16 LANE Improved dirt ————
Medium-duty ———— +LANE 16 LANE Unimproved dirt ————
Loose surface, graded, or narrow hard-surface ————
U. S. Route State Route

TIMPANOGOS CAVE, UTAH
N4022.5-W11137.5/7.5

1948

THIS MAP COMPLIES WITH NATIONAL MAP ACCURACY STANDARDS
FOR SALE BY U. S. GEOLOGICAL SURVEY, DENVER, COLORADO OR WASHINGTON 25, D. C.

OCT 15 1957