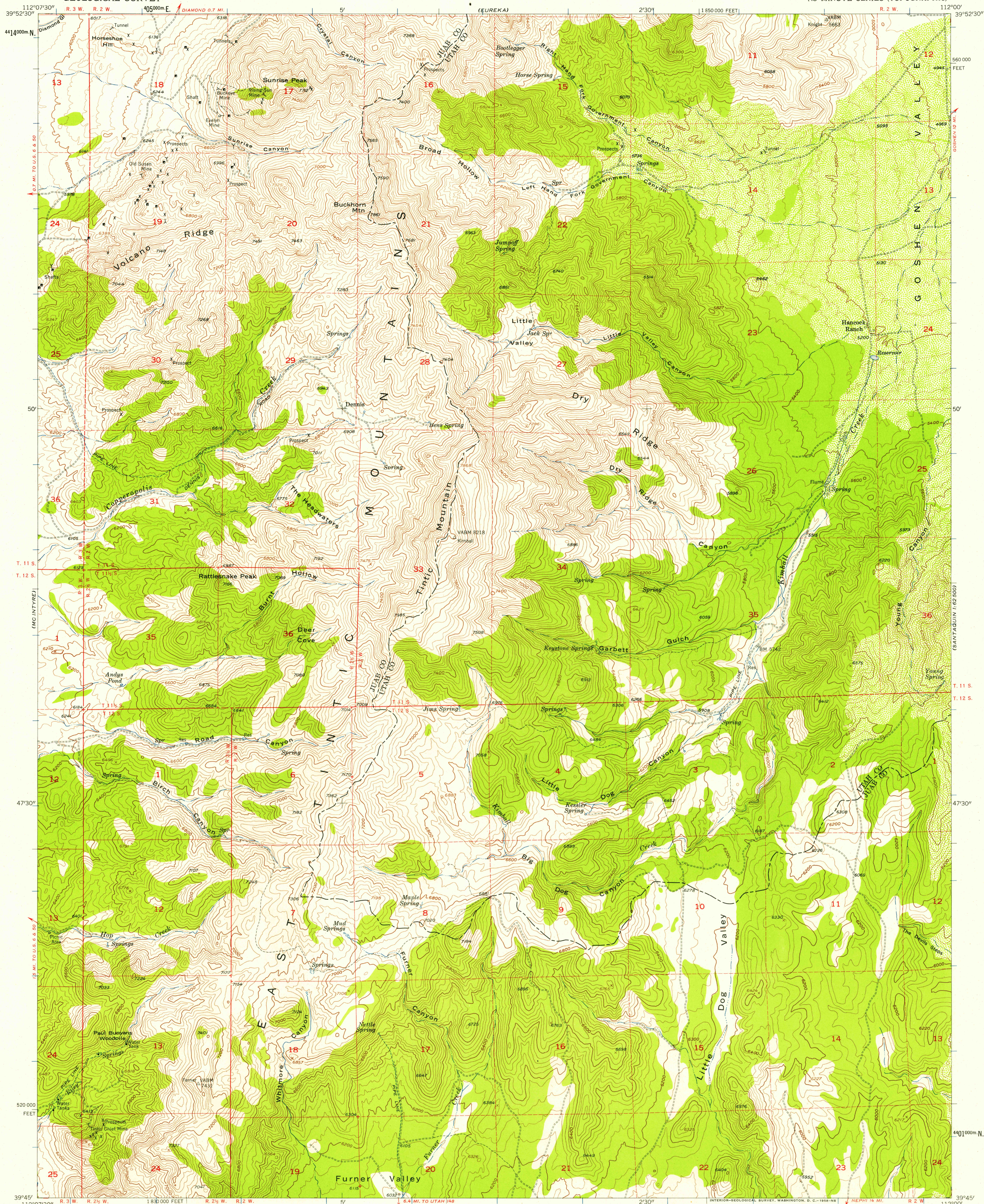
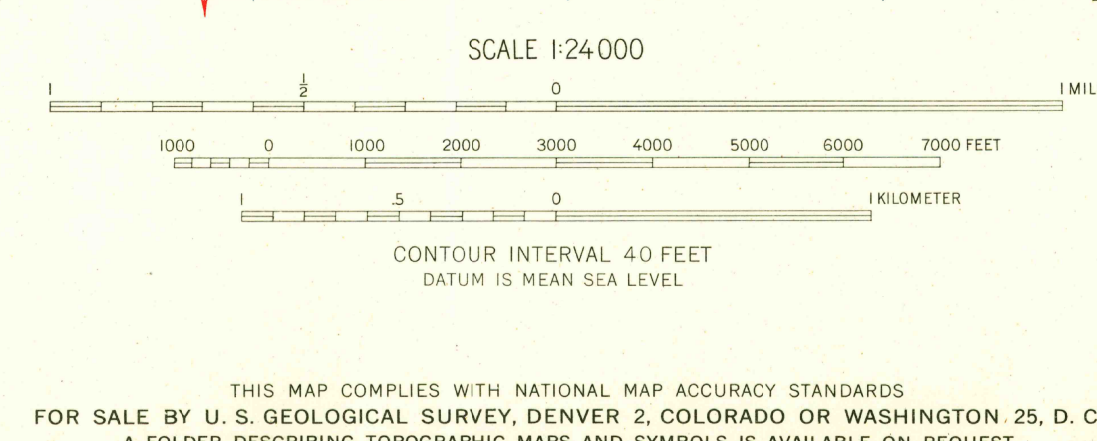
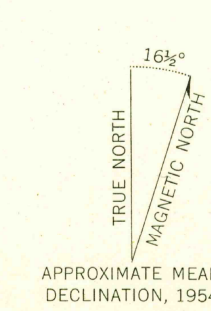


UNITED STATES
DEPARTMENT OF THE INTERIOR
GEOLOGICAL SURVEY

TINTIC MOUNTAIN QUADRANGLE
UTAH
7.5 MINUTE SERIES (TOPOGRAPHIC)



Mapped, edited, and published by the Geological Survey
Control by USGS and USCGS
Topography from aerial photographs by multiplex methods
Aerial photographs taken 1950. Field check 1954
Polyconic projection. 1927 North American datum
10,000-foot grid based on Utah coordinate system, central zone
1000-meter Universal Transverse Mercator grid ticks,
zone 12, shown in blue
Dashed land lines indicate approximate locations
Unchecked elevations shown in brown



USGS
Historical File
Topographic Division

ROAD CLASSIFICATION

Heavy-duty	Light-duty
Medium-duty	Unimproved dirt
U. S. Route	State Route

U.S.G.S.
FILE COPY
TOPOGRAPHIC DIVISION

TINTIC MOUNTAIN, UTAH
N 3945-W 11200/7.5
1954

MAR 10 1954

5925