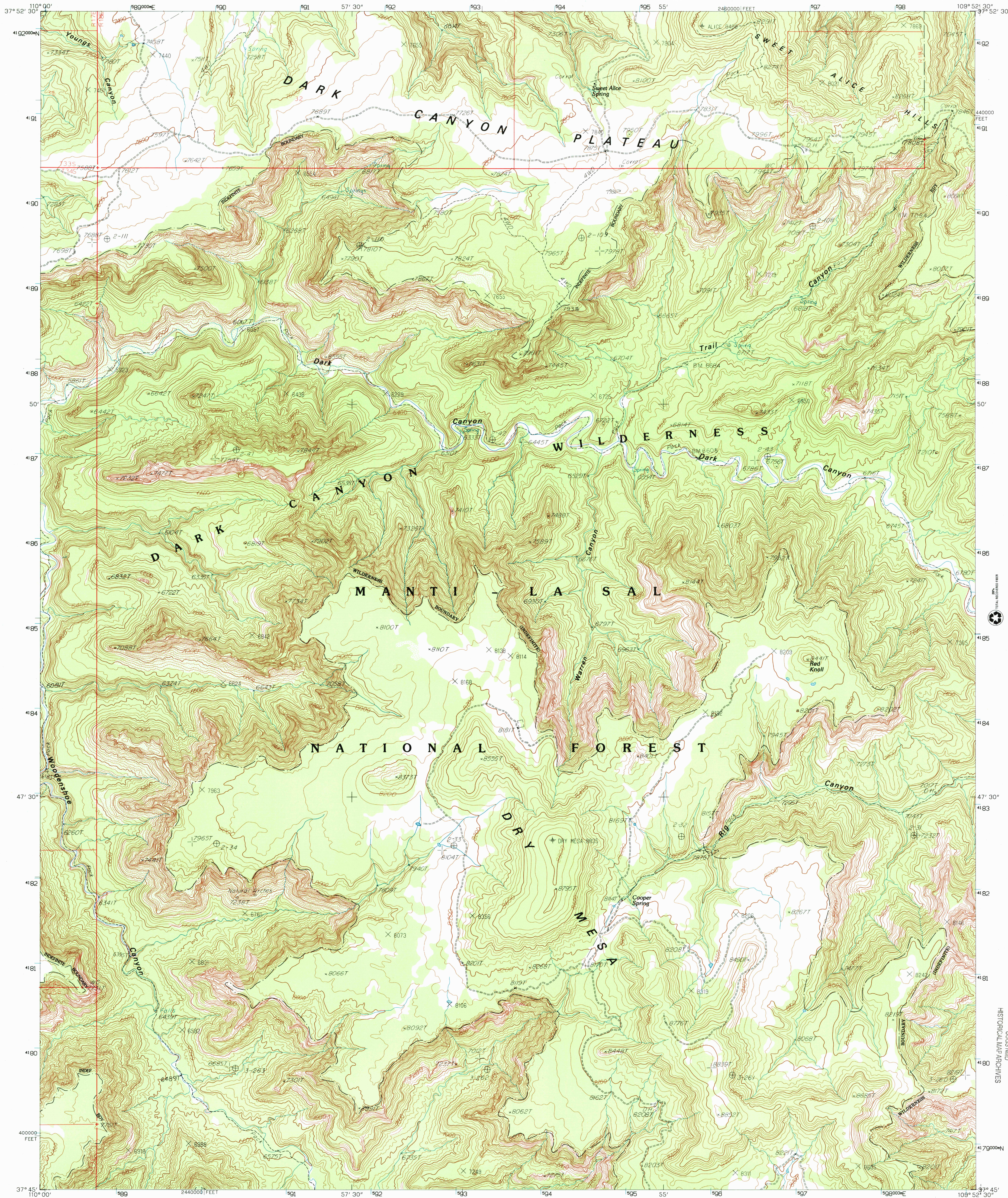




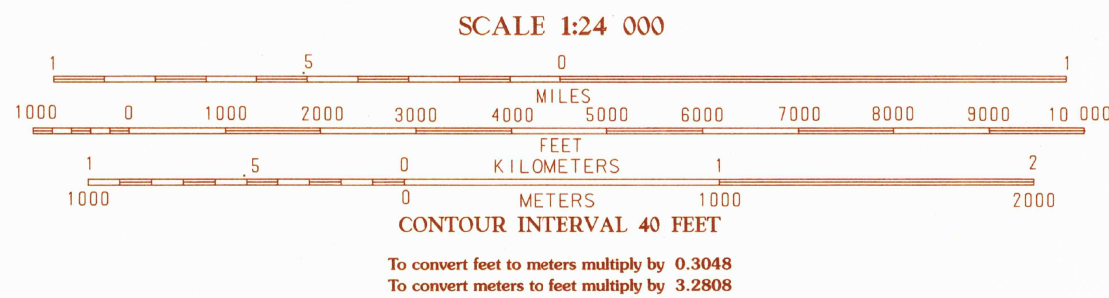
U.S. DEPARTMENT OF THE INTERIOR
U.S. GEOLOGICAL SURVEY

WARREN CANYON QUADRANGLE
UTAH-SAN JUAN CO.
7.5 MINUTE SERIES (TOPOGRAPHIC)



PRODUCED BY THE UNITED STATES GEOLOGICAL SURVEY
CONTROL BY USGS, NOS/NOAA
COMPILED FROM AERIAL PHOTOGRAPHS TAKEN 1978
FIELD CHECKED 1979, MAP EDITED 1985
PROJECTION LAMBERT CONFORMAL CONIC
BLUE 1000-METER UNIVERSAL TRANSVERSE MERCATOR TICS, ZONE 12
10 000-FOOT STATE GRID TICS, UTAH, SOUTH ZONE
UTM GRID DECLINATION 0°39' EAST
1985 MAGNETIC NORTH DECLINATION 13° EAST
VERTICAL DATUM NATIONAL GEODETIC VERTICAL DATUM OF 1929
HORIZONTAL DATUM NORTH AMERICAN DATUM OF 1927 (NAD 27)
North American Datum of 1983 (NAD 83) is shown by dashed
corner ticks. The values of the shift between NAD 27 and NAD
83 for 7.5-minute intersections are obtainable from National
Geodetic Survey NADCON software.
There may be private inholdings within the boundaries of any
Federal and State reservations shown on this map
Where omitted, land lines have not been established

PROVISIONAL MAP
Produced from original
manuscript drawings. Infor-
mation shown as of date of
field check. 2



THIS MAP COMPLIES WITH NATIONAL MAP ACCURACY STANDARDS
FOR SALE BY U.S. GEOLOGICAL SURVEY, P.O. BOX 25286, DENVER, COLORADO 80225
A FOLDER DESCRIBING TOPOGRAPHIC MAPS AND SYMBOLS IS AVAILABLE ON REQUEST



1	2	3	1	2	3
4	5	6	4	5	6
7	8	9	7	8	9

ADJOINING 7.5' QUADRANGLE NAMES

ROAD LEGEND
Improved Road
Unimproved Road
Trail
Interstate Route U.S. Route State Route

WARREN CANYON, UT
PROVISIONAL EDITION 1985

37109-G8-TF-024

RECEIVED
OCT 31 1999
USGS MWD
HISTORICAL MAP ARCHIVES

