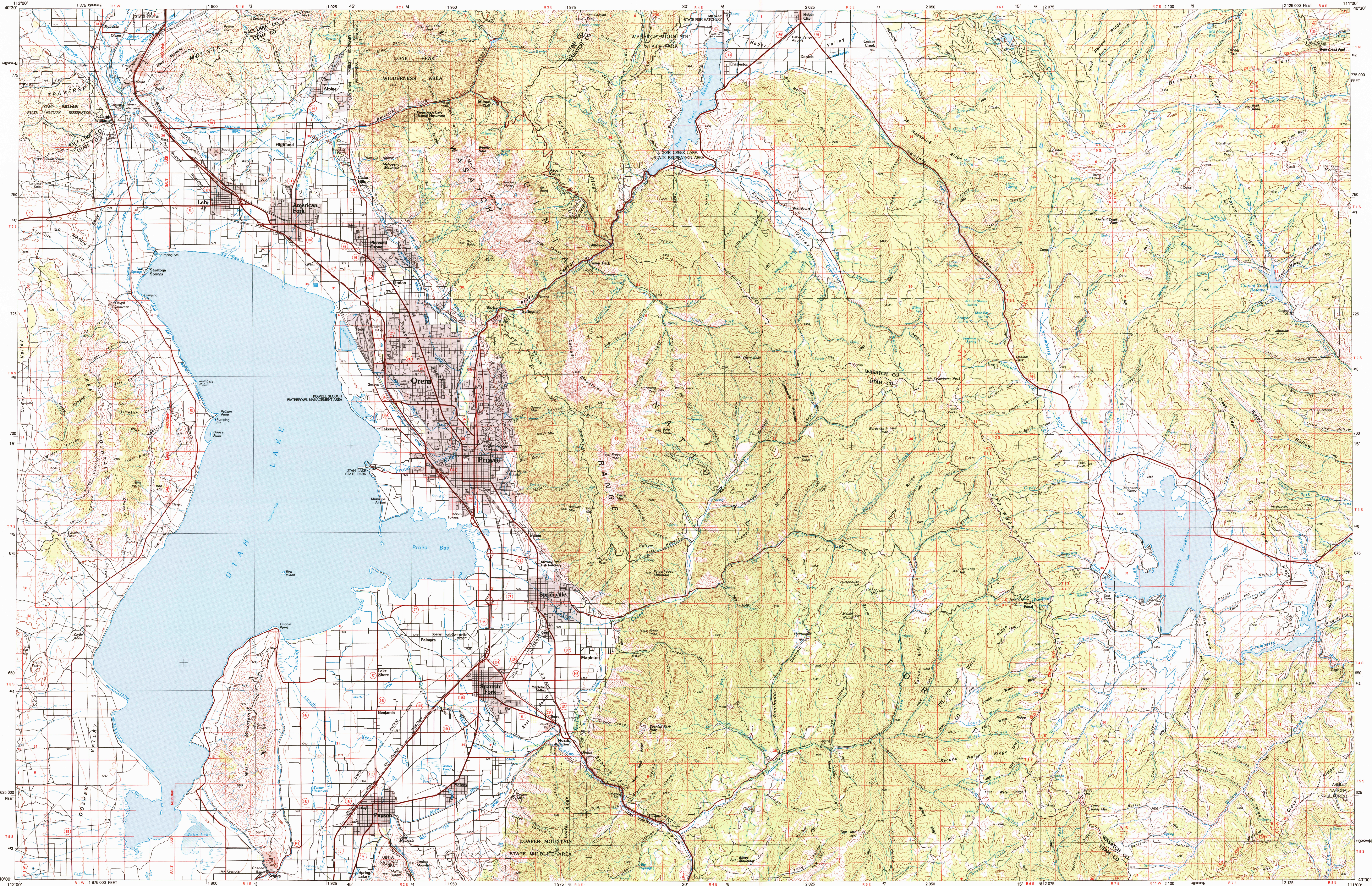


PROVO, UTAH

30X60 MINUTE SERIES (TOPOGRAPHIC)



Provo
UTAH

1:100 000-scale metric
topographic map



30 X 60 MINUTE QUADRANGLE
SHOWING

- Contours and elevations in meters
- Highways, roads and other manmade structures
- Water features
- Woodland areas
- Geographic names



GEOLOGICAL SURVEY

1986

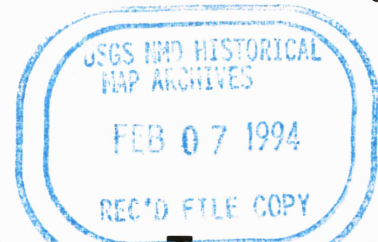
Produced by the United States Geological Survey
in cooperation with the State of Utah
Compiled from USGS 1:24 000-scale topographic maps
dated 1948-1975. Planimetry revised from aerial
photographs taken 1981 and other source data.
Map edited 1986.
Projection and 10 000-meter grid, zone 12
Universal Transverse Mercator
25 000-foot grid ticks based on Utah coordinate
system, central zone. 1927 North American Datum
To place on the predicted North American Datum 1983 move
the projection lines 9 meters north and 64 meters east.
There may be private inholdings within the boundaries of
the National or State reservations shown on this map.

CONTOUR INTERVAL 50 METERS
SUPPLEMENTARY CONTOUR INTERVAL 25 METERS
NATIONAL GEODETIC VERTICAL DATUM OF 1929
ELEVATIONS SHOWN TO THE NEAREST METER

THIS MAP COMPLIES WITH NATIONAL MAP ACCURACY STANDARDS

CONVERSION TABLE		DECLINATION DIAGRAM		ADJOINING MAPS										
Meters	Feet			1	2	3								
1	3.2808			4	5									
2	6.5617													
3	9.8425													
4	13.1234													
5	16.4042													
6	19.6850													
7	22.9658													
8	26.2467													
9	29.5275													
10	32.8084													
To convert meters to feet multiply by 3.2808														
To convert feet to meters multiply by 0.3048														

FOR SALE BY U. S. GEOLOGICAL SURVEY, DENVER, COLORADO 80225
OR RESTON, VIRGINIA 22092



Topographic Map Symbols

Primary highway, hard surface	
Secondary highway, hard surface	
Light duty road, principal street, hard or improved surface	
Other road or street, trail	
Route marker: interstate, U. S., State	
Railroad: standard gage, narrow gage	
Bridge: overpass, underpass	
Tunnel: road, railroad	
Built up area, locality, elevation	
Airport, landing field, landing strip	
National boundary	
State boundary	
County boundary	
National or State reservation boundary	
Land grant boundary	
U. S. public lands survey: range, township; section	
Range, township; section line: protracted	
Power transmission line: pipeline	
Dam; dam with lock	
Cemetery, building	
Windmill; water well; spring	
Mine shaft; adit or cave; mine, quarry, gravel pit	
Campground; picnic area; U. S. location monument	
Ruins; cliff dwelling	
Distorted surface: strip mine, lava, sand	
Contours: index; intermediate; supplementary	
Bathymetric contours: index; intermediate	
Stream, lake: perennial; intermittent	
Rapids, large and small; falls, large and small	
Area to be submerged; marsh, swamp	
Land subject to controlled inundation; woodland	
Scrub; mangrove	
Orchard; vineyard	

A pamphlet describing topographic maps is available on request

PROVO, UTAH

40111-A1-TM-100

1986