



30 X 60 MINUTE QUADRANGLE
SHOWING

- Contours and elevations in meters
- Highways, roads and other manmade structures
- Water features
- Woodland areas
- Geographic names



GEOLOGICAL SURVEY

1980

Produced by the United States Geological Survey

Compiled from USGS 1:24 000-scale topographic maps dated 1966-1968 and from advance materials. Partially revised from aerial photographs taken 1976 and other source data. Revised information not field checked.
Map edited 1980.
Projection and 10 000-meter grid, zone 12 Universal Transverse Mercator.
25 000-foot grid ticks based on Utah coordinate system, central zone, 1927 North American datum.
To place on the predicted North American Datum 1983 move the projection lines 7 meters north and 65 meters east.
There may be private inholdings within the boundaries of the National or State reservations shown on this map.

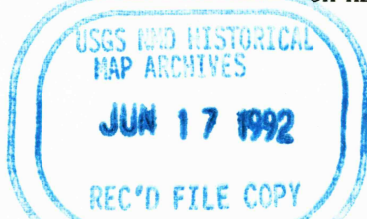
CONTOUR INTERVAL: 50 METERS
SUPPLEMENTARY CONTOUR INTERVAL: 25 METERS
NATIONAL GEODETIC VERTICAL DATUM OF 1929

THIS MAP COMPLIES WITH NATIONAL MAP ACCURACY STANDARDS

CONVERSION TABLE		DECLINATION DIAGRAM	ADJOINING MAPS		
Meters	Feet		1	2	3
1	3.2808		4	5	
2	6.5617				
3	9.8425				
4	13.1234				
5	16.4042				
6	19.6850				
7	22.9659	UTM grid convergence (GN) and 1980 magnetic declination (MN) for central map. Diagram is approximate.	6	7	8
8	26.2467				
9	29.5276				
10	32.8084				
To convert meters to feet multiply by 3.2808					
To convert feet to meters multiply by 0.3048					

1 Delta
2 Mont
3 Washington
4 Richfield
5 San Rafael Desert
6 Beaver
7 Lee
8 Hanksville

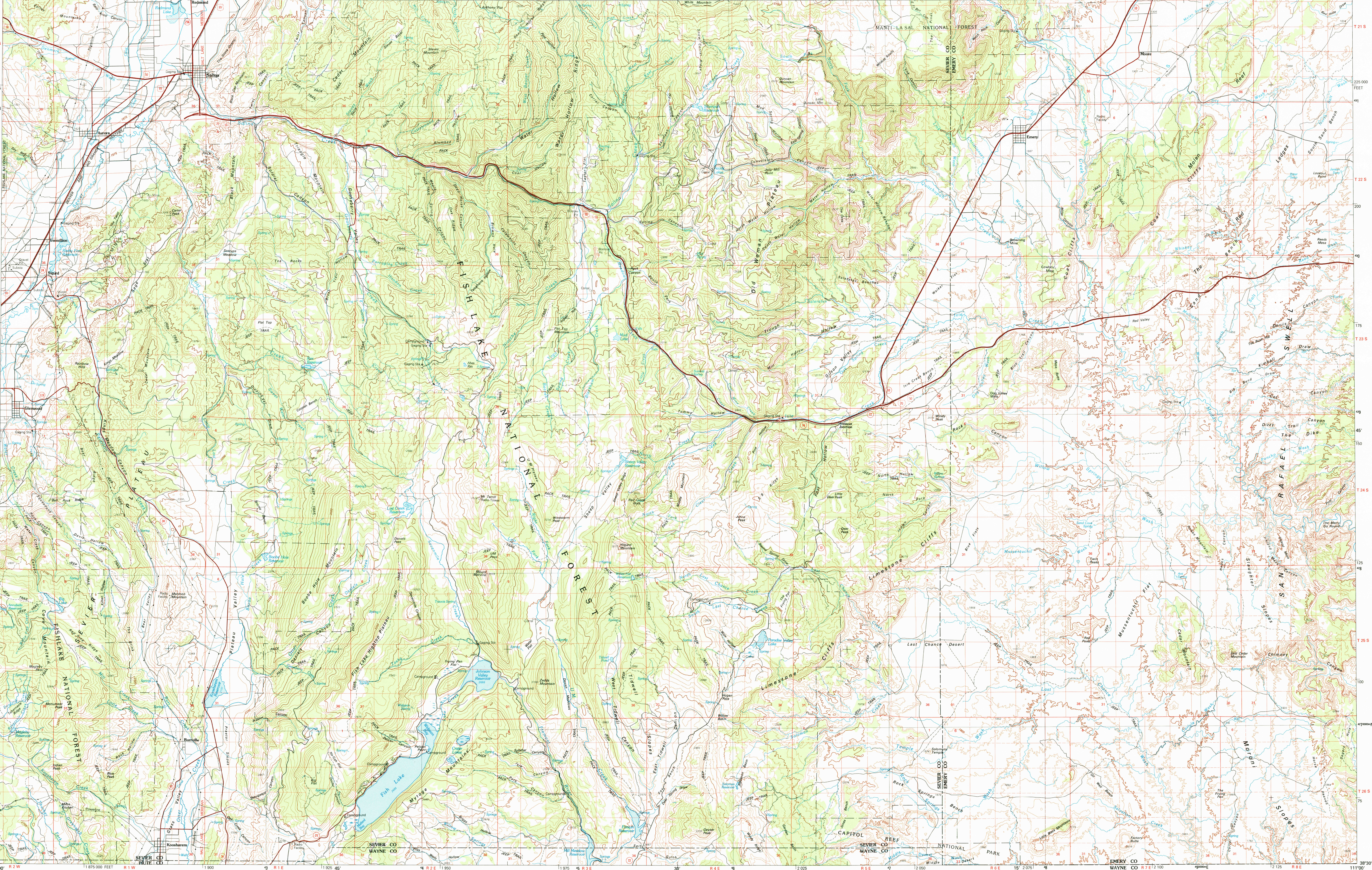
FOR SALE BY U.S. GEOLOGICAL SURVEY, DENVER, COLORADO 80225
OR RESTON, VIRGINIA 22092



Topographic Map Symbols

Primary highway, hard surface	
Secondary highway, hard surface	
Light duty road, principal street, hard or improved surface	
Other road or street; trail	
Route marker: Interstate; U.S.; State	
Railroad: standard gage; narrow gage	
Bridge: overpass; underpass	
Tunnel: road; railroad	
Built-up area; locality; elevation	
Airport: landing field; landing strip	
National boundary	
State boundary	
County boundary	
National or State reservation boundary	
Land grant boundary	
U.S. public lands survey; range, township; section	
Range, township; section line; protracted	
Power transmission line; pipeline	
Dam; dam with lock	
Cemetery; building	
Windmill; water well; spring	
Mine shaft; adit or cave; mine, quarry; gravel pit	
Campground; picnic area; U.S. location monument	
Ruin; cliff dwelling	
Disturbed surface: strip mine; levee; sand	
Contours: index; intermediate; supplementary	
Bathymetric contours: index; intermediate	
Stream, lake; perennial; intermittent	
Rapids, large and small; falls, large and small	
Area to be submerged; marsh, swamp	
Land subject to controlled inundation; woodland	
Scrub; meadow	
Orchard; vineyard	

A pamphlet describing topographic maps is available on request



SALINA, UTAH
N3830-W11100/30x60

1980

