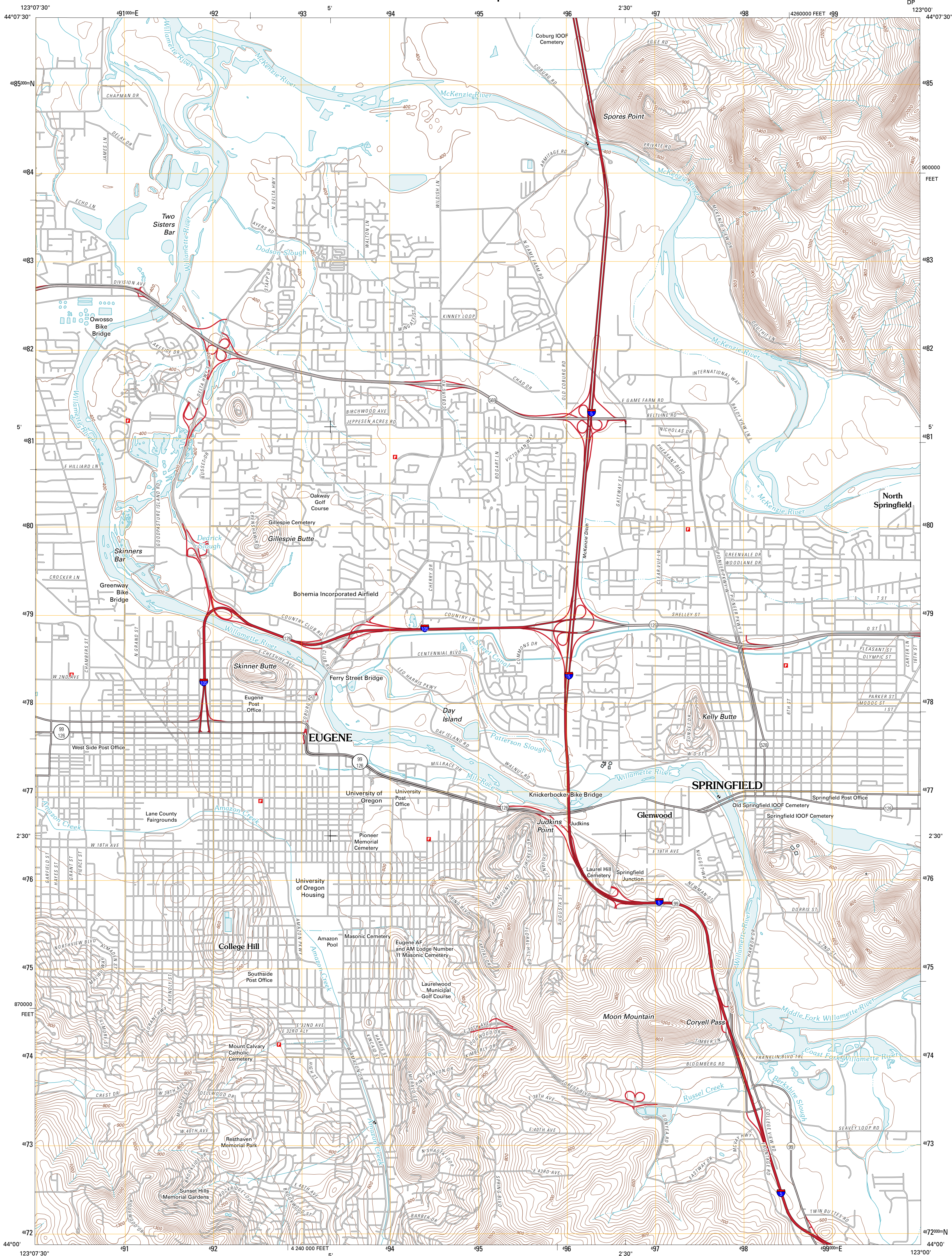




U.S. DEPARTMENT OF THE INTERIOR  
U. S. GEOLOGICAL SURVEY

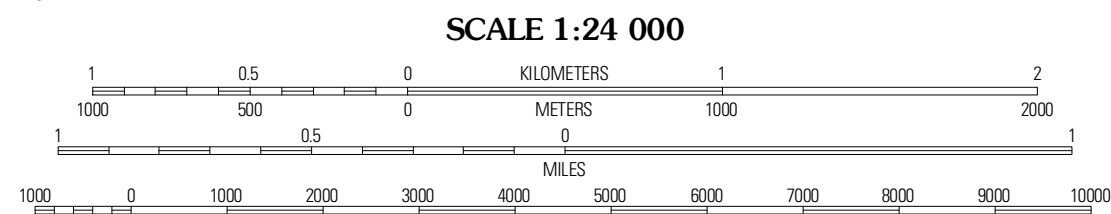
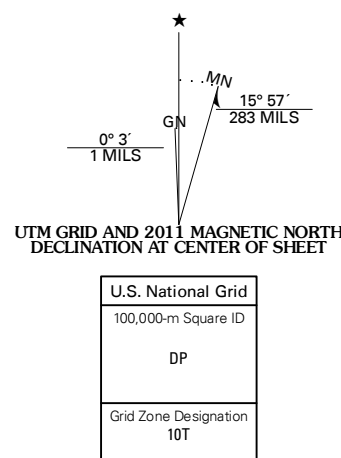


EUGENE EAST QUADRANGLE  
OREGON-LANE CO.  
7.5-MINUTE SERIES



Produced by the United States Geological Survey  
North American Datum of 1983 (NAD83)  
World Geodetic System of 1984 (WGS84). Projection and  
1 000-meter grid: Universal Transverse Mercator, Zone 10T  
10 000-foot ticks: Oregon Coordinate System of 1983 (south  
zone)

Imagery.....NAP, June 2009  
Roads.....©2006-2010 Tele Atlas  
Names.....GNIS, 2010  
Hydrography.....National Hydrography Dataset, 2009  
Contours.....National Elevation Dataset, 1999  
Boundaries.....Census, IBWC, IBC, USGS, 1972 - 2010



CONTOUR INTERVAL 20 FEET  
NORTH AMERICAN VERTICAL DATUM OF 1988  
This map was produced to conform with version 0.5.10  
of the USGS US Topo Product Standard.  
A metadata file associated with this product is draft version 0.5.16



| Junction City | Coburg      | Mohawk      |
|---------------|-------------|-------------|
| Eugene West   | Eugene East | Springfield |
| Fox Hollow    | Creswell    | Jasper      |

| ROAD CLASSIFICATION |             |            |
|---------------------|-------------|------------|
| Interstate Route    | State Route | Local Road |
| US Route            | 4WD         |            |
| Ramp                |             |            |

EUGENE EAST, OR  
2011