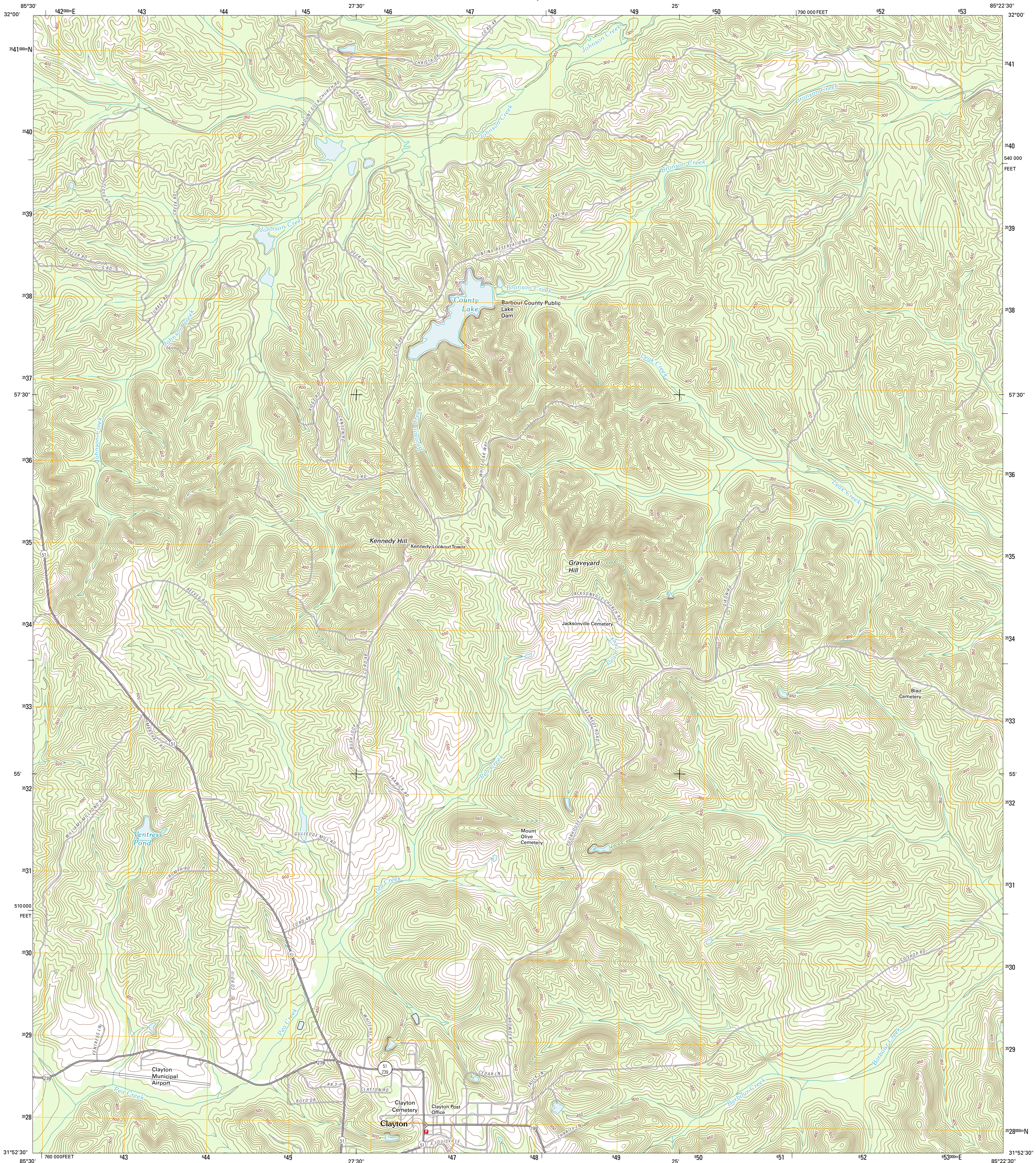




U.S. DEPARTMENT OF THE INTERIOR
U. S. GEOLOGICAL SURVEY



CLAYTON NORTH QUADRANGLE
ALABAMA-BARBOUR CO.
7.5-MINUTE SERIES



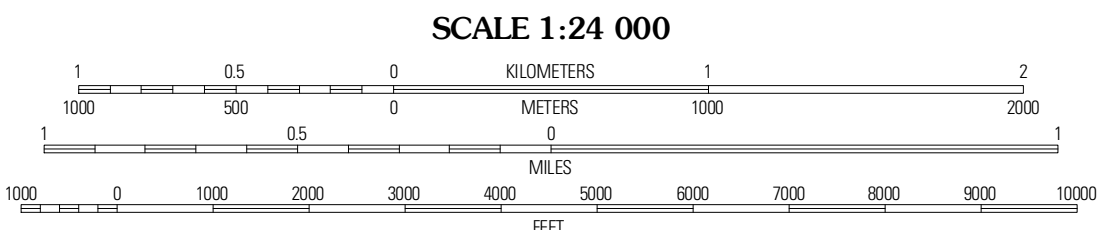
Produced by the United States Geological Survey
North American Datum of 1983 (NAD83)
World Geodetic System of 1984 (WGS84), Projection and
1 000-meter grid; Universal Transverse Mercator, Zone 16R
10 000-foot ticks; Alabama Coordinate System of 1983 (east
zone)

Imagery.....NAIP, October 2009
Roads.....©2006-2011 Terracon
Names.....GNIS, 2011
Hydrography.....National Hydrography Dataset, 2009
Contours.....National Elevation Dataset, 2007
Boundaries.....Census, IBWC, IBC, USGS, 1972 - 2010

UTM GRID AND 2011 MAGNETIC NORTH
DECLINATION AT CENTER OF SHEET

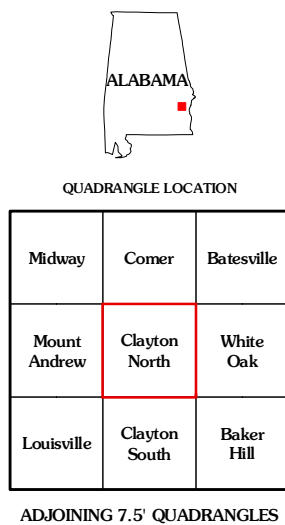
3° 32' 63 MILS
0° 50' 15 MILS

U.S. National Grid
100,000-m Square ID
FA
Grid Zone Designation
16R



CONTOUR INTERVAL 10 FEET
NORTH AMERICAN VERTICAL DATUM OF 1988

This map was produced to conform with the
National Geospatial Program US Topo Product Standard, 2011.
A metadata file associated with this product is draft version 0.6.0



ROAD CLASSIFICATION

Interstate Route
US Route
Ramp

State Route
Local Road
4WD

Midway	Corner	Batesville
Mount Andrew	Clayton North	White Oak
Louisville	Clayton South	Baker Hill

CLAYTON NORTH, AL
2011